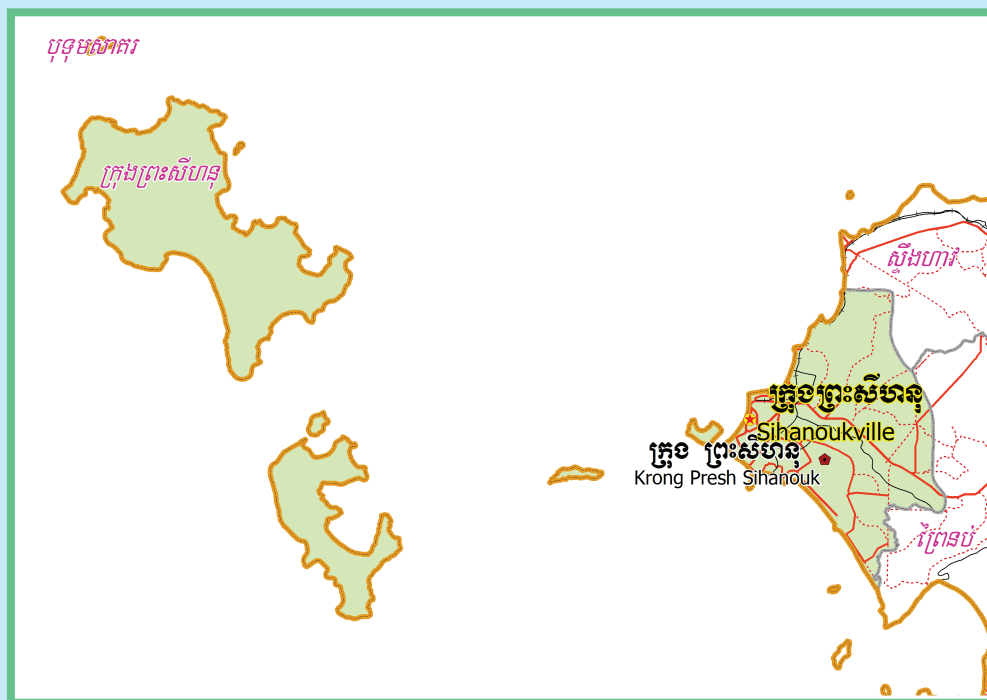


**KINGDOM OF CAMBODIA**  
**Nation Religion King**



**National Committee for Sub-National  
Democratic Development (NCDD)**



**PREAH SIHANOUK KRONG DATA BOOK 2009**

**Krong Code Nr: 1801**  
**Preah Sihanouk Province**

**October 2009**



# **Preah Sihanouk Krong Data Book 2009**

District Code Nr: 1801

**Preah Sihanouk Province**



# Table of Contents

List of Abbreviations .....	i
Glossary.....	ii
Preface .....	vi
Introduction .....	vii
SECTION A: GEOGRAPHY .....	1
1 Administration and Infrastructure.....	3
2 Land Use and Natural Resources.....	5
3 Geography .....	7
3.1 Land Area .....	7
3.2 Distances between Offices .....	7
SECTION B: DISTRICT PROFILE .....	9
1 General Information .....	11
1.1 Population of the District.....	11
1.2 Occupations .....	12
1.3 Property .....	14
2 Infrastructure and Economy.....	16
2.1 Roads in meters over 3 years.....	16
2.2 Sewerage Pipes in meters over 3 years.....	16
2.3 Drainage and Bridges .....	16
2.4 Services in the District .....	16
2.5 Agriculture.....	17
3 Social Aspects .....	28
3.1 Education .....	28
3.2 Health.....	34
3.3 Water and Sanitation .....	36
3.4 Vulnerable groups.....	40
3.5 Migration .....	42
4 Natural Resources and Environment (NRE).....	44
4.1 Families involved with NRE issues over 3 years .....	44
4.2 Percentage of Families involved with Natural Resource issues, by Commune, for 2008 .....	44
4.3 Percentage Houses with access to Garbage collection and Families affected by environmental Pollution, by Commune, for 2008 .....	44
4.4 Percentage Families using chemical Fertilizer and chemical Pesticides, by Commune, for 2008 ..	44
5 Administration and Security .....	45

5.1	Birth Registration across 3 years.....	45
5.2	Number of unregistered Infants born in 2008, by Commune .....	45
5.3	Registered criminal Cases over 3 years .....	45
5.4	Registered criminal Cases per 10,000 people, by Commune, for 2008.....	45
5.5	Number of registered Land Disputes, by Commune, in 2008 .....	45
6	Gender .....	46
6.1	Registered Domestic Violence over 3 years.....	46
6.2	Percentage of registered cases of Families experiencing domestic Violence, by Commune, in 2008 .....	46
6.3	Women's involvement over 3 years.....	46
6.4	Percentage of Female Participants in Civil Society and of 18-60 year women with uncertain Jobs, by Commune, in 2008 .....	47
6.5	Female-headed Households over 3 years.....	47
6.6	Percentage female-headed Households and with Children of less than 5 years old, by Commune, in 2008 .....	47
7	Indigenous People in the District .....	48
7.1	Ethnic Minorities in the District over 3 years.....	48
7.2	Other Minorities in the District over 3 years.....	48
	SECTION C: PLANS AND PROJECTS .....	49
8	Priorities and Plans .....	51
8.1	Priorities of Commune Councils for 2009 in the District by Sector .....	51
8.2	Temporary Agreements by Commune, for 2009 .....	55
8.3	Outputs, estimated and actual costs of C/S Fund Projects between 2005 and 2008, by Commune .....	71
8.4	Total Expenditure on C/S Fund Projects by sector and commune between 2005 and 2008.....	72
8.5	Actual 2009 C/S Fund projects by Commune .....	73
9	District level Projects from 2006 to 2009 .....	74
9.1	District Initiative Infrastructure Projects from 2006 to 2009 .....	74
9.2	District Initiative Service Projects from 2006 to 2009 .....	75
9.3	Inter Commune Council Projects in 2008 and 2009 .....	76
9.4	Other Projects in 2008 and 2009 .....	77
	SECTION D: SERVICES AND ORGANIZATIONS .....	79
10	Infrastructure.....	81
10.1	Length of and Expenditure on Roads in 2008, by District .....	81
10.2	Scale of and Expenditure on Irrigation in 2008, by District.....	81
10.3	Power Supply in 2008, by District .....	82
11	Health Facilities.....	83

11.1 Health Facilities in the Province, by Operational District.....	83
11.2 Health Facilities and Staff in the province, by Operational District.....	83
11.3 Deliveries in 2007 in the Province, by Operational District.....	84
12 Education .....	85
12.1 Schools, Classes, Students, Staff, for for all levels, for 2007/2008 by District.....	85
12.2 Characteristics of Schools and School Principals for 2007/2008 by Commune .....	85
12.3 Enrolment by Level of Education, 2006/2007 by Commune .....	85
12.4 Enrolment by Level of Education, 2007/2008 by Commune .....	86
12.5 Aspects of Enrolment for 2007/2008 by Commune.....	86
12.6 School Buildings for all schools in the District for 2007/2008, by Commune .....	86
12.7 Conditions of Classrooms and Existence of Separate School Office and Library, by Commune	87
12.8 Community Participation and Financing across all schools in the District for 2007/2008 by Commune .....	87
12.9 Percentage Student Flow Rates and Graduation by level 2006/2007, by Commune .....	87
13 Staff and Resources at the District .....	88
13.1 District Councilors elected in 2009 .....	88
13.2 Committees of the Council.....	88
13.3 Board of Governors.....	89
13.4 Offices under Sala Krong, Sala Srok and Sala Khan .....	89
13.5 Municipality/District/Khan line offices.....	89
13.6 Properties and Equipment of District Administration .....	89
13.7 Registered Revenue of the District Administration in 2008 .....	90
13.8 Services in the District .....	90
13.9 Civil Society Organizations active in the District.....	91
13.10 Private Sector Organizations.....	92
SECTION E: POVERTY DATA .....	93
14 Data on Poverty .....	95
14.1 Predicted Poverty Rates for 2009, by commune .....	95
14.2 Poverty data from survey.....	95





## List of Abbreviations

#	Number
AGR	Agriculture
BR	Birth Registration
C. Pilot	Piloted Commune
C/S	Commune / Sangkat
CBO	Community-Based Organization
CDB	Commune Database
CDPD	Commune Development and Planning Database
CIP	Commune Investment plan
CLTS	Community Led-Total Sanitation
Comm.	Commune
Com Cov	Commune Covered
CPA	Complementary Package of Activities
CPS	Community Preschool
CCWC	Commune Committees for Women and Children
DANIDA	Danish International Development Agency
DDLG	Democratic Development and Local Governance Project (EC-UNDP)
DFID	Department For International Development (UK)
DIP	District Initiative Project
DIS	District Information System
District PDRD	District Office of Rural Development
District WP	District Work Plan
DIW	District Integration Workshop
DoLA	Department of Local Administration
Dr	Doctor
DWRM	District Office of Water Resource and Meterology
ECD	Early Childhood education (part of PE)
EMIS	Education Management Information System
Event IC	Celebration of International Days
FDH	Former District Hospital
GTZ	German Society for Technical Cooperation (Gesellschaft für Technische Zusammenarbeit GmbH)
Ha	Hectare
HC	Health Center
HC (NB)	Health Center (no building)
HH	Headed Household
HSI	Intervention for Health
HP	Health Post
HW	Hand Washing
ICC	Inter Commune Council
IFAD	International Fund for Agricultural Development
IND	Industry
Inter-commune	Inter-Commune Project Management Committee or Inter-commune project
IO	International Organization
LASED	Land Allocation for Socio-Economic Development
LGCR	Local Governance for Children's Rights
M&E	Monitoring and Evaluation
MA	Medical Assistant
MoEYS	Ministry of Education, Youth and Sports
MoH	Ministry of Health

MoP	Ministry of Planning
MPA	Minimum Package of Activities
MW1	Primary Midwives
MW2	Secondary Midwives
n/a	Not available
NCD	National Contracts Database
NCDD	National Committee for Sub-National Democratic Development
NGO	Non-Governmental Organization
NRML	Natural Resources Management and Livelihood
NU1	Primary Nurse
NU2	Secondary Nurse
OD	Operational District
ODF	Open Defecation Free
Ope. Costs	Operational Costs
Others	Other Staff
PBW	Public Works
PDoEYS	Provincial Department of Education, Youth and Sport
PDRD	Provincial Department of Rural Development
PDWRM	Provincial Department of Water Resource and Meteorology
PE	Parenting Education
PHAST	Participatory Hygiene and Sanitation Transformation
PHD	Provincial Health Department
PID	Project Information Database
PMC	Project Management Committee
Pop 04-05	Population Covered 2004 or 2005
PSDD	Project to Support Democratic Development through Decentralization and Deconcentration
RRD	Rural Road Development
RH	Referral Hospital
RILGP	Rural Investment and Local Governance Project
RPRP	Rural Poverty Reduction Program
RuLIP	Rural Livelihoods Improvement Program
SIDA	Swedish International Development Cooperation Agency
SPPA	Senior Provincial Program Advisor
TBA	Traditional Birth Attendant
UNDP	United Nations Development Project
UNICEF	United Nations Children's Fund
Vil	Village
Vil Cov	Village Covered
VIL-HC	Distance from Village to Health Center
WASH	Water, Sanitation and Hygiene
WRM	Water Resource and Meteorology

## Glossary

**C/S Fund:** The Commune/Sangkat Fund is established and managed by the Government of Cambodia to provide financial support for development projects and administrative costs of Commune/Sangkat Councils. The amount is determined as a percentage of the National Budget (for 2009: 2.8% over the 2008 budget) and is expected to increase gradually over the years. The total 2009 budget under this fund is \$ 27,643,902 (of which \$ 19,272,170 is for Development Projects and \$ 8,371,731 for Administration). Under the Rural Investment and Local Governance Project the World Bank currently reimburses the costs of development projects if these meet the Bank's criteria.

**CDB:** the Commune Data Base is a national database, compiled by the Ministry of Planning, on the basis of detailed questionnaires, completed at village and commune level, which are then sent to the Departments of Planning for data entry. The most recent round of data collection took place at the end of 2008 (and is reflected in the District Data Books). Commune, District and Provincial Profiles can be generated from this database and should be available from provincial Departments of Planning.

**CDPD:** the Commune Development and Planning Database is a database maintained by Departments of Planning and Ministry of Planning, recording proposed activities as determined and prioritized by Commune and Sangkat Councils; the Temporary Agreements between these councils and supporting agencies, as decided at District Integration Workshops and details on projects that actually take place at commune, district and provincial levels.

**CIP:** The Commune Investment Plan is a rolling three-year plan, developed and decided by the Commune or Sangkat Council. It sets priorities and identifies the projects proposed for the years to come.

**Commune and Sangkat (C/S):** the Communes (in rural areas) and Sangkats (in urban areas) are the lowest and smallest units of local government. Councils are elected directly, once in five years, for the 1417 Communes and 204 Sangkats. In the C/S there are 14,119 villages, which have Village Chiefs, but don't constitute a formal level of local government.

**DIP:** the District Initiative Project is jointly supported by the MDLF (Multi-Donor Livelihood Facility (supporting the NRM&L Program)) and PSDD. In 2009 it covers 106 districts, 60% of the total in the country, with a budget of \$ 3.2 million. It is focused on capacity development in planning, democratic development, public competitive procurement, financial management and service delivery.

**DIS:** The District Information System is a national database maintained by NCDD, recording resources, staff, revenue, infrastructure and equipment available in the 193 Districts and Khans throughout the country. The last update took place in July 2009.

**District, Municipality and Khan** constitutes the third level of Government in Cambodia. There are 159 rural Districts, 26 Municipalities and 8 Khans of Phnom Penh Capital. They all have Councils which were, for the first time, elected in May 2009, by the Commune/Sangkat Councilors. These councils have a mandate for 5 years.

**DIW:** District Integration Workshops are held between July and October, to bring Commune/Sangkat Councils, looking for support for their projects, together with the governmental and non-governmental agencies that may provide support.

**ICC:** Inter Communes Council projects are executed in 10 provinces under the Democratic and Decentralized Local Governance Project (DDLG). This five year project (2006-2010) is executed by Ministry of Interior and funded by the European Commission and UNDP. The project focuses on improving dialogue partnership and accountability; create a network of Commune Councils at the provincial and national level and support and contribute to local area development for poverty reduction. The work under the ICC component supports investments and services formulated through inter-commune dialogue and planning.

**MEDiCAM:** A non-profit and non-partisan membership organization for NGOs active in Cambodia's health sector. It is the primary networking agency for health-related NGOs.

**NCDD:** the National Committee for sub-National Democratic Development is the inter-ministerial body charged with the implementation of the Organic Law (a key legislative document, adopted in 2008, outlining the envisaged decentralization). NCDD also channels substantial financial assistance by a number of Development Partners, to projects and programs at various levels. This amounted to over \$ 91 million in 2008. More information at: [www.ncdd.gov.kh](http://www.ncdd.gov.kh). This website also provides access to reports, manuals, legal documents, details on projects and more.

**OD:** the Operational Districts are the districts as defined and used by the Ministry of Health. These do not coincide with the 193 (Administrative) Districts and Khans, as used by all other RGC agencies. The Operational Districts are usually larger, and so there are 77 Operational Districts against 193 administrative Districts and Khans. However they do fit within the boundaries of administrative provinces.

**PID:** The Project Information Database is the database maintained by NCDD at national and sub national level, to follow all aspects of projects by Commune and Sangkat Councils, including the C/S Fund projects

### **Provincial Investment Fund (PIF)**

The Provincial Investment Fund is allocated to all Provinces and Municipalities according to a population based formula. Part of the fund is earmarked for support to planning activities of the Provincial / Municipal Department of Planning; and to gender mainstreaming activities of the Provincial Department of Women's Affairs. The remaining "un-earmarked PIF" is allocated by PRDC to sectoral technical departments against established criteria and in response to proposals with prioritisation taking into account: priorities formulated by the CS Councils and aggregated by District into District Priority Activities Matrices (DPAM); alignment with national planning and poverty alleviation criteria, complementarity with other planned activities; and performance of the Department concerned in implementation of activities in previous years. With this provisional allocation, the Department then programs activities through the District Integration Process. Finally, the agreed activities, plus support costs amounting to no more than 25% of the total, are included in a sub-contract signed between PRDC and the Department, pursuant to the overall PSDD contract signed between NCDD and PRDC. Total budget has been around \$ 2 million per year.

**Province:** the 23 Provinces and Phnom Penh Capital City represent the 2<sup>nd</sup> layer of government. They vary in size, from very small, like Kep (approx. 36,000 people) and Pailin (approx. 70,000 people), or large but with small populations, like Mondulkiri (over 60,000 people), and Ratanakiri (over 153,000) to densely populated and large, like Kampong Cham (over 1.7 million people) and Kandal (approx. 1.4 Million people).

**PSDD:** the Project to Support Democratic Development through Decentralization and Deconcentration is funded by DFID (UK), SIDA (Sweden) and UNDP and runs from 2006 till the end of 2010 (including a one year extension). Annual budgets range from \$ 11 million to over \$ 18 million. The project provides core technical support to NCDD and to the provinces, financial support to the C/S Fund, District Initiative, Provincial Investment Fund and capacity building support through training, studies and advisory services.

**RILGP:** The Rural Investment and Local Governance Project is a World Bank funded project that provides substantial support to C/S Fund projects and to developing the required infrastructure, policies, systems and skills. It started in 2003 with a Loan for \$ 22 million for 2003-2007 and was then extended with a Grant of \$ 36 million for the period of 2007-2010. Discussions about a possible RILGP 2 are taking place between RGC and the World Bank.

**RPRP:** the Rural Poverty Reduction Project is a seven year project from 2004 till 2010, funded by IFAD and UNDP and implemented through the Ministry of Agriculture, Forestry and Fishery, supported by the Ministry of Interior and facilitated by NCDD. The project is active in the provinces Prey Veng and Svay Rieng and focuses on 120,600 households below poverty line. The objective is poverty reduction with the active participation of the poor through improved livelihoods, Strengthened capacity, Sustainable farming systems and natural resource management, new and/or rehabilitated infrastructure development, increase accessibly to technology, services and markets for their economic and social development.

**RULIP:** the Rural Livelihoods Improvement Project is implemented by the Ministry of Agriculture Forestry and Fisheries (MAFF)' Project Support Unit- PSU, with the NCDD playing the role of cooperating agency. Funded by IFAD and UNDP, the project will run till 2014. The target group consists of poor households who have little or even no land, few livestock or other assets and often many dependents. The main goal of the project is to directly or indirectly improve the livelihood systems, food security and incomes of a total of 33,900 rural poor, ethnic minority and female headed households in targeted village of Kratie, Preah Vihear and Ratanakiri provinces in a sustainable manner.

**Seth Koma:** The UNICEF funded Seth Koma program focuses on measurable action for children and women. During 2006 -2010 it is implemented in six provinces. Government and UNICEF pursue a set of inter-related goals, addressing critical stages of the life cycle of the child: a) Mothers have safe pregnancies and deliveries and healthy newborns; b) best possible start in life of infant; c) Children enter schools at the right age of six years; d) Children are protected from exploitation, abuse, violence, discrimination and other risks; and e) Youth and adolescents acquire life skills, express their views, participate in the decisions.

## **Preface**

The Government of Cambodia attaches great importance to optimal use of scarce resources and to participatory planning and management at all levels. The Organic Law which was adopted in 2008 provides the legal context for further steps towards improving and decentralizing planning, management and monitoring, and towards greater accountability and transparency of institutions at sub-national levels.

The Government has established elected Councils at the sub-national levels, and we will progressively give them the responsibilities, together with the human and financial resources, to deliver a wide range of public services. They will be more democratic, more efficient, more transparent and accountable, better at addressing gender and other inequalities, and at fighting corruption. We recognize that development does not come from government alone; it needs the involvement of citizens, civil society and the private sector, and the new system will facilitate this.

A central element in this process is the availability of information on any aspect of development to all concerned parties. The newly elected Councillors at District and Khan level, line departments operating at these levels, but also NGOs, Development Partners, Commune Councillors and citizens throughout Cambodia need information on problems and requirements, resources and opportunities, services and agencies, plans and projects. They will need such information to better understand the present situation, set targets for the future, monitor progress, know what others are doing and to apply resources wisely and this is the reason the District Data books will be so valuable.

The District Data Books are a major step towards full transparency and towards informed planning and decision-making. They provide all available data at District, Khan, Commune and Sangkat level in easily accessible formats, in Khmer and English, through over 16,000 printed copies, CD-ROMs and the NCDD website.

This is the first time in Cambodia (and possibly in South East Asia) that such detailed information is made so widely available and NCDD should be commended for the hard work that has gone into this. We also thank the Ministry of Planning, which provided the detailed data of the Commune Data Base, the sectoral ministries and provincial authorities who contributed data and the Development Partners who provided financial support.

It is our sincere hope that the publication of the District Data Books will strengthen capacities, especially at district levels, for evidence-based development planning. We also hope that this information will deepen the understanding among Ministries, Provincial Authorities, Development Partners, NGOs and research agencies of the realities at commune and district levels.

We call upon all to use and distribute this information, complement or correct where appropriate and to contribute new data in the years to come.

**Sar KHENG**

Deputy Prime Minister, Minister of Interior and Chairman of NCDD

## Introduction

### Purpose

The purpose of the District Data Books is to bring together information on any aspect of life and development of Districts, Khans, Communes and Sangkat, together and make this widely available. The primary targets are the newly elected District Councilors, district level line departments, provincial agencies, Development Partners and NGOs operating at this level. They need detailed knowledge on current living conditions, natural resources, infrastructure, agriculture and other economic activities, current service levels, past and planned projects and available resources.

While much information exists on many of the above aspects, it is often hard to access that information and much is lost to reports, databases and statistics that are not widely shared. Data are often only available in one language and often out-of-date, and many reports cover only one sector or region.

We found that these problems are especially acute at the district level. Now that Districts are becoming a much more significant level of local government and development planning, there is an urgent need for wide-ranging data to be used for setting base-lines, planning and prioritizing, monitoring and learning.

### Approach

We have attempted to identify and compile all available statistics, reports, maps and other data at district and/or commune level. From this we have selected information that is available for all or most districts, reasonably reliable and up-to-date, sufficiently detailed and of possible interest to development planners, decision makers, agencies and citizens.

The major sources of the information in these District Data Books are:

- a) The Commune Data Base information over the years 2006 to 2009 (the most recent data were collected late last 2008), as compiled by the Ministry of Planning
- b) Detailed information directly collected from the Ministry of Health, the Ministry of Education, Youth and Sports and (for maps) the Ministry of Land Management, Urban Planning and Construction
- c) The Project Information Database (PID) at NCDD (up-to-date)
- d) The Commune Development and Planning Database (CDPD) (up to date)
- e) The District Information System (DIS) (updated per Mid 2009)
- f) Direct data collection at provincial and district level on private sector, irrigation, roads, and electricity, through provincial agencies
- g) Medical data collected from MEDiCAM
- h) The ID Poor Project – for poverty data on a number of provinces and districts
- i) NCDD's work on predictive poverty rates
- j) Specific projects for outputs, plans and budgets (Seth Koma, RILGP, RPRP and ICC)

### Limitations of the data

We are fully aware that the data we collected are not always complete, consistent or correct. While we have rejected information that was wrong or very incomplete, we decided not to aim for statistical and scientific perfection, but to include information that is useful, relevant

and comprehensive. We also accepted different sources for the same data as this may encourage discussion on the quality of the respective data.

We strongly encourage anyone who notes errors or incompleteness in these data to contact us and to share their data. We hope that the next round of producing such District Data Books can draw on wider sources and more complete data.

We encourage the District Administrations, who receive these data also in digital format, not only to use these for their planning and monitoring, but also to start correcting and updating these data and to share new data with NCDD for future use.

## Contents

The information in the following pages is organized in five sections:

- a) **Geographical data:** this section provides maps on infrastructure and administration and on land use and natural resources management. These maps are also provided in large format to all Districts and Khans.
- b) **District Profile:** this presents wide ranging data, covering 2006 – 2009, at district and commune level, extracted from the Commune Data Base, but edited for better understanding.
- c) **Plans and Projects:** this section presents development priorities determined by Commune and Sangkat Councils, Temporary Agreements, outputs and expenditure of major projects at Commune and District level over 2006 – 2008 and plans and budgets for 2009.
- d) **Services and Organizations:** this section provides details on key infrastructure (roads, electricity, irrigation systems) and services in health and education at district and commune level. It also provides an inventory of resources at the District Administration, NGOs operating in the district and private sector agencies active in the district.
- e) **Poverty Data:** this section provides predicted poverty rates for 2009 for all districts and communes and detailed poverty data compiled and processed by the ID Poor project for those that have been covered by this project.

## The future

It is our hope that this is the start of a longer-term process. We hope that a next edition of these District Data Books will offer more comprehensive, correct and up-to-date information. We hope that the District Administrations will not only start using this information, but also improve and update it. For this they are all provided with the full data set in digital format.

We invite agencies, projects and experts to send reports, statistics and maps that could be used for a next version to us and we invite all users of the District Data Books to inform us about errors, updates and inconsistencies. Please contact us through [info@ncdd.gov.kh](mailto:info@ncdd.gov.kh)

We now invite you to browse through this data book. You may open this randomly or use the table of contents and go to the aspects that have your special interest.

We hope that you will be informed, surprised and assisted. We hope, above all, that this information will lead to a deeper understanding of causes and effects of poverty, to purposeful decisions on how to tackle those causes and to greater transparency in using scarce resources for the benefit of all.

Martin de Graaf  
Program Advisor, PSDD/NCD



## **SECTION A: GEOGRAPHY**



# **1 Administration and Infrastructure**

Please see separate folder containing A3 maps.



## **2 Land Use and Natural Resources**

Please see separate folder containing A3 maps



### 3 Geography

#### 3.1 Land Area

Total Land Area (ha)	Forest Land Area (ha)		Cultivation Land Area (ha)	Construction Land Area (ha)	Other Land Area (ha)
	Total	Flooded Forest Area			
19589.75	13945.39	0	1702.06	3455.35	484

#### 3.2 Distances between Offices

Location	Distance (Km)
From District Office to C/S Office of Sangkat Muoy	8
From District Office to C/S Office of Sangkat Pir	2
From District Office to C/S Office of Sangkat Bei	6
From District Office to C/S Office of Sangkat Buon	3
From District Office to C/S Office of Sangkat Kaoh Rung	23





## **SECTION B: DISTRICT PROFILE<sup>1</sup>**

---

<sup>1</sup> All data in this section come from the Commune Database (CDB) unless otherwise specified. These include primarily new CDB data, collected late 2008, and some data from earlier years. Please note that percentages are rounded to the nearest whole number.



# 1 General Information

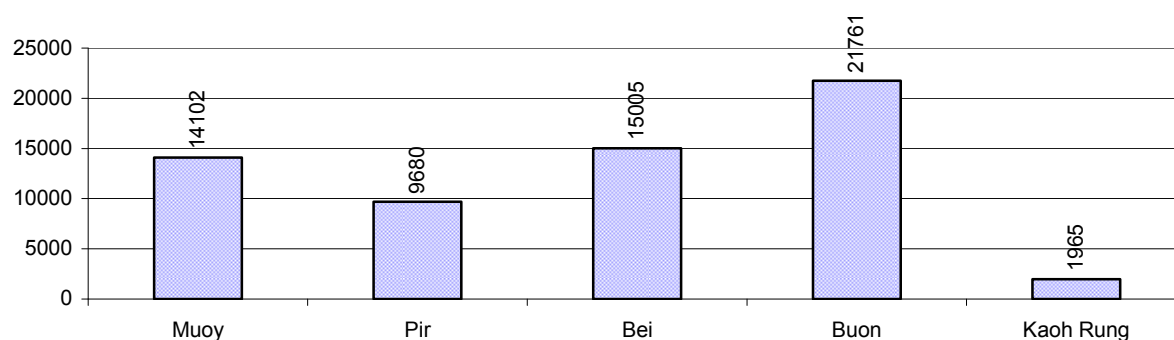
## 1.1 Population of the District

### 1.1.1 Total Population

Number of families	2005	2006	2007	2008
Total number of families	13,832 families	11,963 families	12,013 families	12,910 families
Increase (+)/Decrease (-) in nr of families		-14%	0%	7%
Total population	73,184 pers	62,263 pers	58,816 pers	62,513 pers
Increase (+)/Decrease (-) in nr of people		-15%	-6%	6%
Number of female Headed Households (HH)	1,481 families	1,689 families	1,543 families	1,601 families

**Note:** Percentages of population and increase/decrease are calculated on basis of the previous year. A negative sign in front of the percentage indicates a decrease in population.

### 1.1.2 Population, by Commune, in 2008



### 1.1.3 Population, by Age Group, over 3 years

Population by age group	2006	2007	2008	
	%	%	%	Number
<b>Age 0-5 years (as percentage of the population)</b>	9%	10%	11%	6,834 persons
Male 0-5 yrs	49%	49%	49%	3,382 persons
Female 0-5 yrs	51%	51%	51%	3,452 persons
<b>Age 6-17 (as percentage of the population)</b>	32%	30%	29%	18,147 persons
Male 6-17 yrs	50%	49%	49%	8,941 persons
Female 6-17 yrs	50%	51%	51%	9,206 persons
<b>Age 18-60 (as percentage of the population)</b>	54%	57%	56%	35,134 persons
Male 18-60 yrs	49%	49%	49%	17,309 persons
Female 18-60 yrs	51%	51%	51%	17,825 persons
<b>Age 61 above (as percentage of the population)</b>	5%	3%	4%	2,398 persons
Male 61	48%	47%	48%	1,155 persons
Female 61	52%	53%	52%	1,243 persons

**Note:** The overall percentage for each age group is calculated on the basis of the total population. The gender distribution of each group is calculated on the basis of the population within that particular age group.

## 1.2 Occupations

### 1.2.1 Percentage of families with a particular Occupation over 3 years

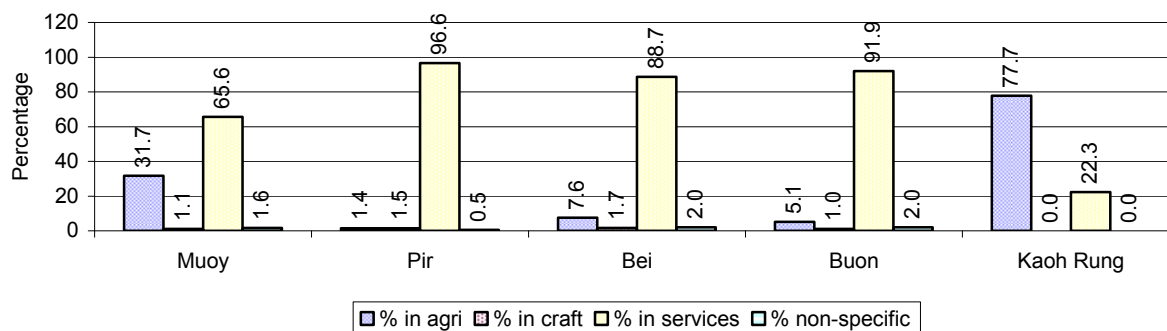
*This table shows the percentage of the population who have a particular occupation (job), for example the percentage of the population in the district who are rice farmers, furniture crafter, trader, etc.*

Description	2006	2007	2008	
	%	%	%	Number
<b>Families whose main occupation is agriculture</b>	13%	13%	14%	1,801 Families
Families whose primary occupation is rice farming	0%	0%	0%	49 Families
Families whose primary occupation is cultivating long-term crops	1%	1%	1%	139 Families
Families whose primary occupation is cultivating short-term crops	1%	1%	1%	171 Families
Families whose primary occupation is cultivating vegetable	0%	0%	0%	49 Families
Families whose primary occupation is fisherman	9%	9%	10%	1,265 Families
Families whose primary occupation is livestock farmer	1%	0%	1%	68 Families
Families whose primary occupation is NTFP collection	1%	1%	0%	60 Families
<b>Families whose main occupation is craft work</b>	1%	2%	1%	161 Families
Families, whose main occupation is in furniture craft, wooden, rattan, vine, bamboo	0%	0%	0%	8 Families
Families whose main occupation is in metal, aluminum, glass goods production	0%	0%	0%	43 Families
Families whose main occupation is food production	0%	1%	1%	95 Families
Families whose main occupation is tire, plastics and rubber goods production	0%	0%	0%	0 Families
Families whose main occupation is textile, clothing goods production	0%	0%	0%	0 Families
Families whose main occupation is in other production, not listed above	0%	0%	0%	15 Families
<b>Families whose main occupation is services</b>	37%	78%	83%	10,740 Families
Families whose main occupation is trade	8%	14%	14%	1,752 Families
Families whose main occupation is repair	2%	6%	4%	549 Families
Families whose main occupation is providing transport services	3%	7%	8%	1,094 Families
Families whose main occupation is providing other services	24%	51%	57%	7,345 Families
Families whose main occupation is not clear (or multi)	50%	7%	2%	208 Families

**Note:** The occupation percentages are calculated on the basis of the total number of families.

### 1.2.2 Percentage Families that work in one of four occupational sectors, by Commune in 2008

This table indicates the percentage of families involved in one of four occupation types: agriculture, craft, services or non-specific (other). Please note agriculture includes forestry activities such as cutting down trees and gathering gum from the trees.



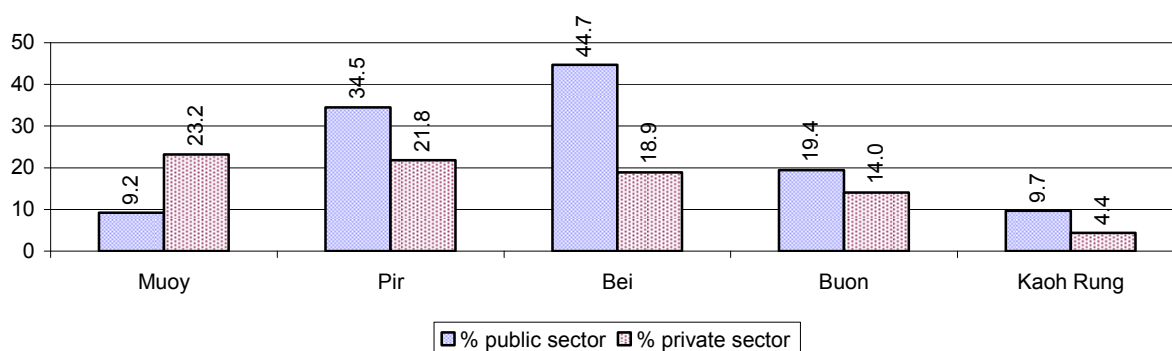
**Note:** Calculated on the basis of the total number of families within a commune.

### 1.2.3 Percentage of Families with public Sector, private Sector or uncertain Jobs, over 3 years

Description	2006	2007	2008	
	%	%	%	Number
Families that have a family member who is a government official, staff or worker	34%	25%	25%	3,189 families
Families that have a family member who is a private sector staff or worker	16%	16%	18%	2,343 families
Number of people aged 18-60 with uncertain/irregular jobs	5%	5%	5%	1,743 persons

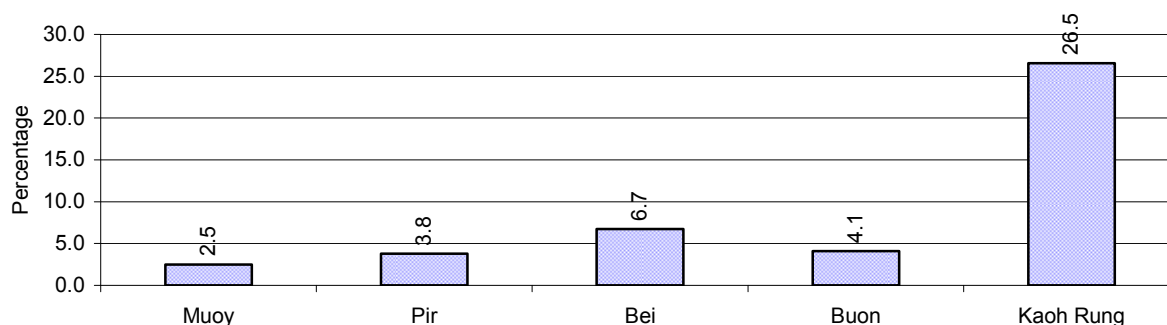
**Note:** In the first two rows percentages are calculated on the basis of the total number of families. In the third row the percentage is calculated on the basis of the total number of people aged 18-60 years.

### 1.2.4 Percentage of Families with public or private Sector Jobs, by Commune in 2008



**Note:** Calculated on the basis of the total number of families in the commune

### 1.2.5 Percentage of People aged 18-60 years with uncertain/irregular Jobs, by Commune, in 2008.



## 1.3 Property

### 1.3.1 Housing types and facilities over 3 years

This table shows the percentage of people living in a certain type of house. It also indicates how many houses have electricity or battery powered lights and how many have TV.

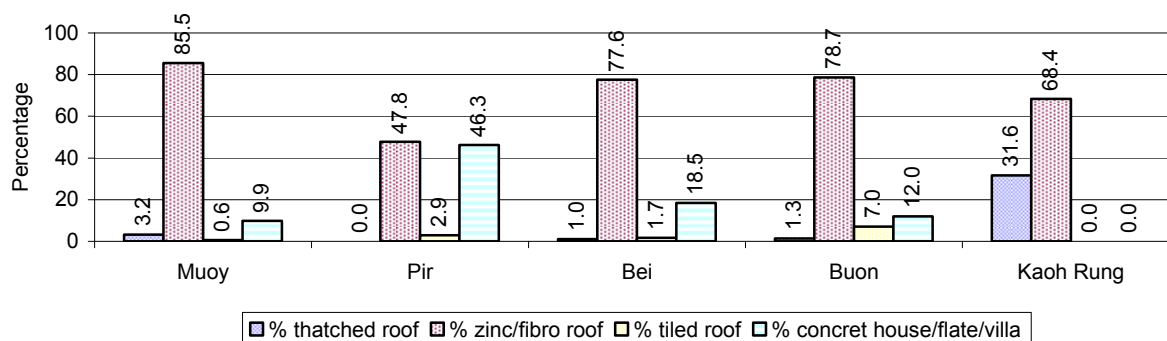
House Type	2006	2007	2008	
	%	%	%	Number
House with thatched roof	3 %	3 %	3 %	301 houses
House with zinc/fibro roof	77 %	78 %	75 %	8,947 houses
House with tiled roof	3 %	3 %	3 %	398 houses
Flats/apartments (with many families living)	3 %	2 %	3 %	330 houses
Concrete house or flat (with one family living)	14 %	13 %	15 %	1,789 houses
Villa house	1 %	1 %	1 %	103 houses
Houses with electricity	94 %	96 %	95 %	11,278 houses
Houses with battery light	2 %	2 %	2 %	270 houses
Houses with TV	90 %	90 %	95 %	11,222 houses

**Note:** Calculated against the total number of houses

### 1.3.2 Families living on public Land or without a permanent House

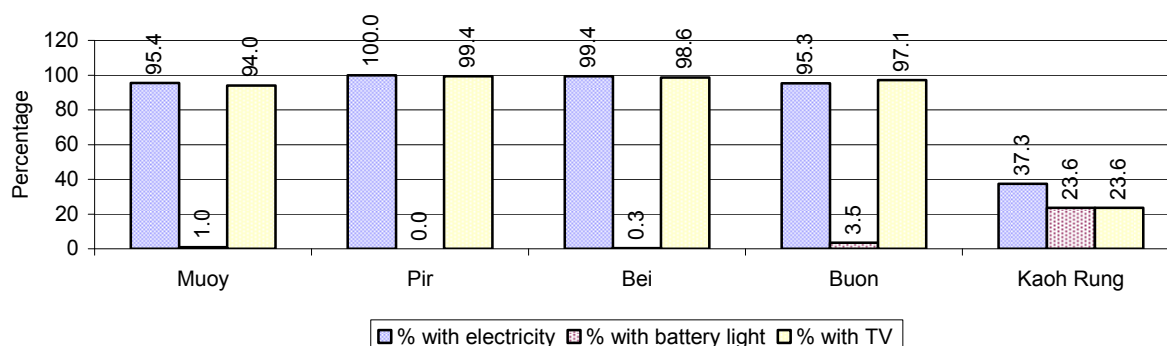
Living situation	2006	2007	2008
Families living in a house on public land	789 families	789 families	852 families
People, without permanent housing	59 person(s)	16 person(s)	38 person(s)

### 1.3.3 Percentage of Population living in a particular type of House, by Commune, in 2008



**Note:** Calculated against the total number of houses in each commune

### 1.3.4 Percentage of Houses with Electricity, Battery Lights and/or TVs, by Commune, in 2008



**Note:** Calculated against the total number of houses in each commune

### 1.3.5 Types of Vehicles and their ratio to Families across 3 years

This table shows the number of families per vehicle in the district. The last column shows the total number of each type of vehicle in the district for 2008.

Description	2006 ratio	2007 ratio	2008	
			Ratio	Number
Bicycle and bicycle with trailer	26	25	26	502
Ox-carts and horse-carts	630	667	340	38
Motorbike/with trailer	1	1	1	10,404
Motor tri-cycle	2,393	429	478	27
Large Transportation				
<b>Total number of cars/trucks</b>	11	8	8	1,585
Locally made vehicles	11,963	N/A	12,910	1
Trucks for goods transport	63	44	41	315
Buses/mini buses for passengers	155	62	130	99
Family cars	14	12	11	1,170
Agriculture machinery				
Tractors used for plowing	5,982	12,013	12,910	1
Power-tillage used for plowing	11,963	2,403	3,228	4
Other type of machinery				
Other type of machinery	3,988	N/A	1,434	9
Water transportation				
Row boats	230	204	239	54
<b>Total number of motor boats</b>	17	16	16	823
Motor boats used for fishing	18	19	20	661
Motor boats used for passengers	1,709	462	1,076	12
Motor boats used for goods transporting	2,991	119	86	150

**Note:** Ratio of families to a particular type of vehicle is the result of the total number of families divided by total number of that type of vehicle. Other types of vehicles, such as bulldozer, excavator, rollers etc. are not listed.

## 2 Infrastructure and Economy

### 2.1 Roads in meters over 3 years

Description	2006	2007	2008
Bituminous road	10,900 m	23,635 m	18,585 m
DBST, Macadam road	14,179 m	21,545 m	23,295 m
Concrete road	900 m	4,245 m	3,138 m
Laterite road	21,434 m	25,360 m	20,162 m
Constructed earth road	0 m	2,270 m	4,340 m
Un-constructed earth road	25,760 m	2,400 m	4,900 m

### 2.2 Sewerage Pipes in meters over 3 years

Description	Sewerage pipe length		
	2006	2007	2008
Total length of sewage pipe, diameter 30-50 cm	96 m	1,396 m	195 m
Length of newly constructed sewage pipe, diameter 30-50 cm	30 m	421 m	2,007 m
Length of sewage pipe, diameter 30-50 cm needs repair/rehabilitation	24 m	565 m	0 m
Total length of sewage pipe, diameter of pipe 60-100 cm	1,134 m	2,845 m	1,740 m
Length of newly constructed sewage pipe, diameter 60-100 cm	232 m	248 m	992 m
Length of sewage pipe, diameter 60-100 cm needs repair/rehabilitation	40 m	740 m	600 m
Sewerage pipe, diameter of pipe over 100 cm	476 m	260 m	1,200 m
Length of newly constructed sewage pipe, diameter over 100 cm	24 m	0 m	500 m
Length of sewage pipe, diameter over 100 cm needs repair/rehabilitation	36 m	200 m	0 m

### 2.3 Drainage and Bridges

Construction Type	2006		2007		2008	
	place(s)	Length	place(s)	Length	place(s)	Length
Single pipe culvert	37	10,302m	13	911 m	29	1,005 m
Double-pipe culvert	14	472m	8	62 m	6	31 m
Box pipe culvert	13	116m	4	30m	2	12 m
Wooden bridge	1	8m	5	260m	6	440 m
Concrete bridge	16	318m	4	247m	7	71 m
Bale bridge	0	0m	0	0m	0	0 m
Spillway construction	0	0m	0	0m	1	30 m

### 2.4 Services in the District

Descriptions	Number of places by year		
	2006	2007	2008
<b>Public</b>			
Electricity generating stations	2	1	1
Health clinics	9	9	9
<b>Private</b>			
Bicycle and motorcycle repair places	52	56	68
Agricultural machinery, tools and equipment repair places	21	7	24



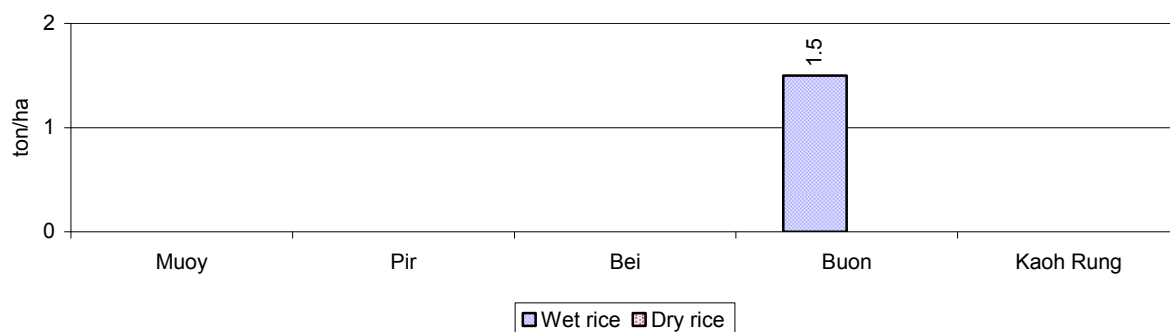
Descriptions	Number of places by year		
	2006	2007	2008
Electronic tool repair places	16	87	27
Battery-charging services	13	10	11
Handicraft places, wooden furniture and forest by-products	11	9	15
Other handicraft places (excluding furniture)	102	28	27
Small-scale services (hairstylist, phone service, massage, Karaoke, etc)	241	220	159
Small-scale food shop businesses (Food, groceries, drink shop, etc)	422	210	214
Small-scale rice mills	1	3	3
Medium or large-scale rice mills	0	0	0
Small-scale markets	6	8	6
Large-scale market	3	1	3
Alcohol refinery places	25	9	38
Pharmacies and small drug stores	24	22	27
Hotels	30	27	23
Guest houses	50	67	74
Restaurants	20	28	33
Gasoline stations	8	9	7

## 2.5 Agriculture

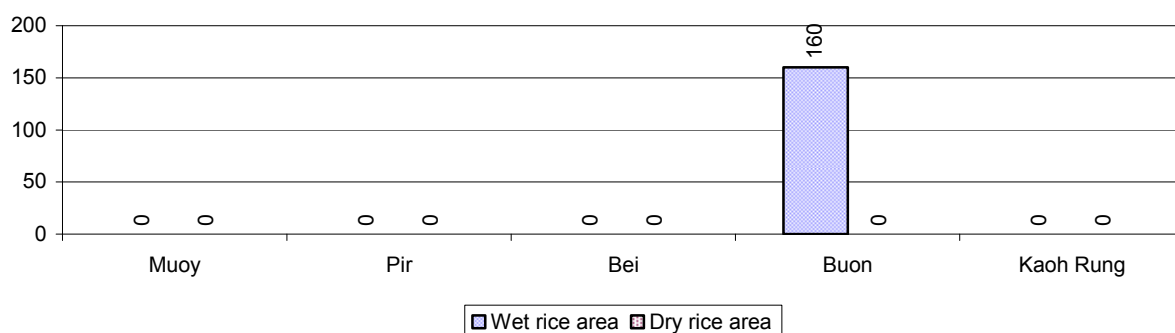
### 2.5.1 Rice cultivation in the District over 3 years

Description	2006	2007	2008
Total dry rice land area	0 ha	0 ha	0 ha
Actual dry rice cultivation area	0 ha	0 ha	0 ha
% actual cultivation to total land	-%	-%	-%
Total dry rice production	- tonne(s)	- tonne(s)	- tonne(s)
Average dry rice yield	- tonne(s)/ha	- tonne(s)/ha	- tonne(s)/ha
Total wet rice land area	50 ha	0 ha	200 ha
Actual wet rice cultivation area	15 ha	0 ha	160 ha
% actual cultivation to total land	30 %	-%	80%
Total wet rice production	23.60 tonne(s)	- tonne(s)	240.00 tonne(s)
Average wet rice yield	1.6 tonne(s)/ha	- tonne(s)/ha	1.5 tonne(s)/ha
Total intensive rice land area	0 ha	0 ha	0 ha
Actual intensive rice cultivation area	- ha	- ha	- ha
Average intensive rice yield	- tonne(s)/ha	- tonne(s)/ha	- tonne(s)/ha
Actual upland rice cultivation area	7 ha	2 ha	2 ha
Total upland rice production	4 tonne(s)	2 tonne(s)	2 tonne(s)
Average upland rice yield	0.6 tonne(s)/ha	0.8 tonne(s)/ha	0.9 tonne(s)/ha

## 2.5.2 Estimated wet and dry Season Rice Yield in tonne(s)/Ha, by Commune, in 2008



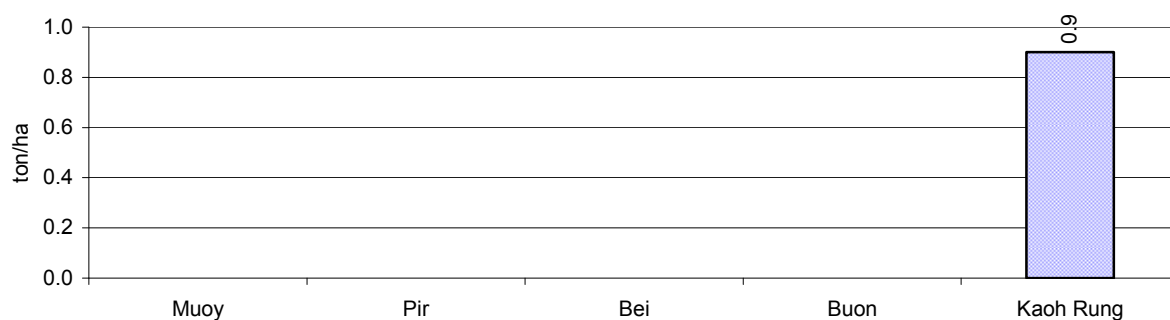
## 2.5.3 Cultivated wet and dry Season Rice areas in Ha, by Commune, in 2008



## 2.5.4 Estimated intensive Rice Yields in tonnes/Ha, by Commune, for 2008

There were no estimated intensive rice yields in this District in 2008

## 2.5.5 Estimated upland Rice Yield in tonnes/Ha, by Commune, for 2008

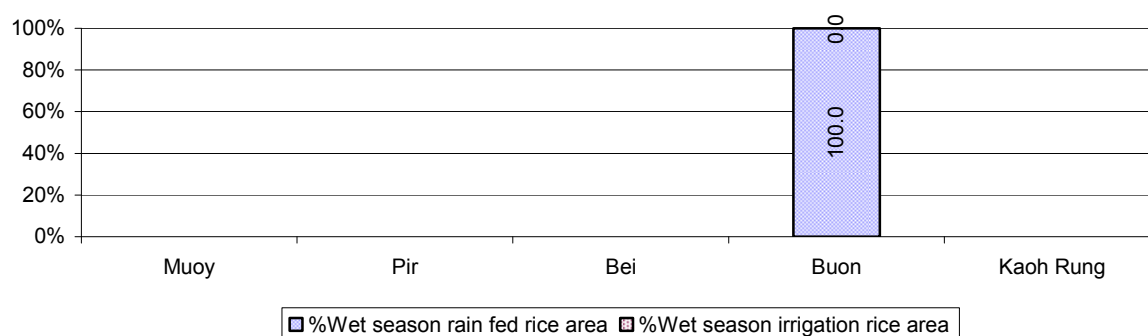


### 2.5.6 Wet season Rice irrigation across 3 years

Description		2006 %	2007 %	2008	
				%	Number
Total area of wet season rain fed rice land		100%	-%	100 %	160 ha
Percentage of wet season rice land that is irrigated; and for 2008 area in Ha		0 %	- %	0 %	0 ha
Where	Area irrigated from canal/dam	- %	- %	- %	0 ha
	Area irrigated from river, stream, lake, natural pond	- %	- %	- %	0 ha
	Area irrigated from drilled well	- %	- %	- %	0 ha
	Area irrigated from dug pond	- %	- %	- %	0 ha

### 2.5.7 Water sources for wet Season Rice Cultivation, by Commune, in 2008

This chart shows the percentage of wet season rice cultivation receiving water from rain (natural) and from irrigation.



### 2.5.8 Access to Irrigation

Description	2006 %	2007 %	2008	
			%	Number
Families who have access to irrigation water	0%	0%	0%	0 families
Families who have irrigation wells	0%	0%	0%	0 families

**Note:** Calculated against the total number of families are rice farmers

### 2.5.9 Number of Irrigation Wells over 3 years

Description	2006	2007	2008
Number of irrigation wells	0 wells	0 wells	0 wells

### 2.5.10 Percentage of Families with access to (supplemental) Irrigation for wet Season Rice cultivation, by Commune, in 2008

There are no families with access to supplemental irrigation for wet season rice irrigation in this District in 2008

**Note:** % of families, with access to irrigation is calculated against the total number of families, whose main occupation is rice farming. Irrigated wet rice land area is calculated against the total actual wet rice land cultivated areas

### 2.5.11 Irrigation Wells, by Commune, in 2008

There are no irrigations wells in this District in 2008

### 2.5.12 Farmers owning less than one hectare of Rice Land

Description	2006 %	2007 %	2008	
			%	Number
Families who have less than one hectare of rice land	33%	0%	0%	0 families
Families who do not own any rice land	7%	86%	0%	0 families

**Note:** Calculated on basis of total number of families who are rice farming

### 2.5.13 Percentage of Farmers with less than one Hectare or no Rice Land, by Commune, in 2008

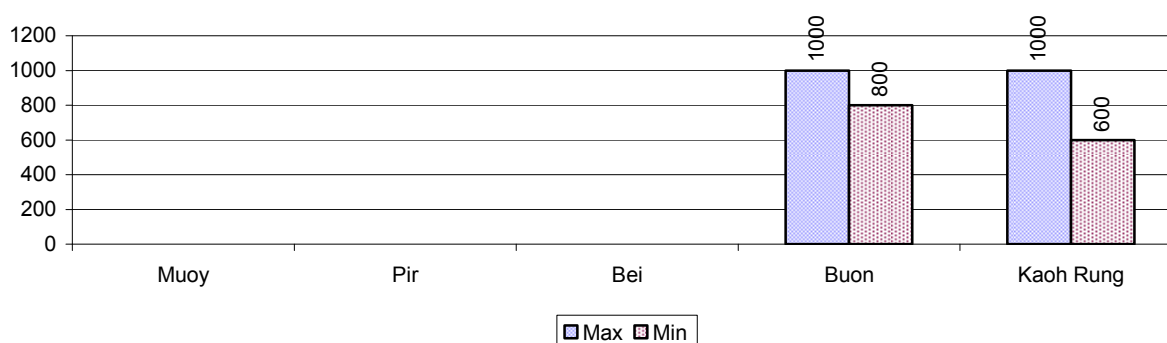
There were no farmers with less one hectare or no rice land in this district in 2008

**Note:** Calculated on basis of total number of families who are rice farming

### 2.5.14 Average farm-gate Prices of Rice, over 3 years

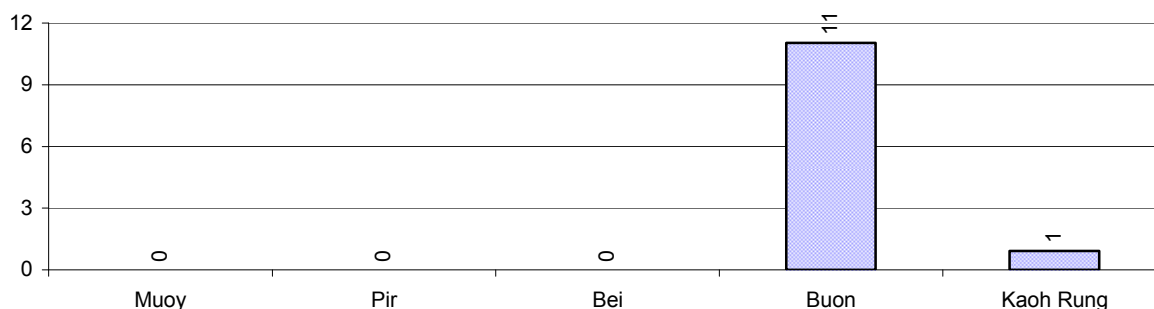
Description	2006	2007	2008
Maximum average farm gate price	675 Riels/Kg	800 Riels/Kg	1,000 Riels/Kg
Minimum average farm gate price	550 Riels/Kg	700 Riels/Kg	700 Riels/Kg
Average farm gate price	613 Riels/Kg	750 Riels/Kg	850 Riels/Kg
Average rice production per person	0 Kg/person	0 Kg/person	4 Kg/person

### 2.5.15 Minimum and maximum farm-gate Prices of Rice in Riel/kg, by Commune, in 2008



### 2.5.16 Production of Paddy in Kgs/Person, by Commune, in 2008

This table shows how much paddy (harvested rice) is produced in a year in a commune, in kgs per person.



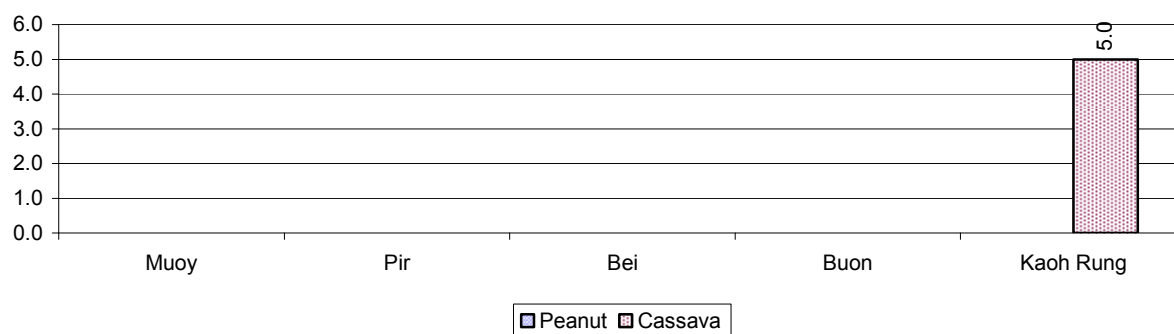
### 2.5.17 Production of other Crops, over 3 years

Crops	2006	2007	2008
Corn cultivation area	0 ha	0 ha	0 ha
Estimated corn yield	- tonne(s)/ha	- tonne(s)/ha	- tonne(s)/ha
Estimated corn production	- tonne(s)	- tonne(s)	- tonne(s)
Soya bean cultivation area	0 ha	0 ha	0 ha
Estimated Soya bean yield	- tonne(s)/ha	- tonne(s)/ha	- tonne(s)/ha
Estimated Soya bean production	- tonne(s)	- tonne(s)	- tonne(s)
Mungbean cultivation area	0 ha	0 ha	0 ha
Estimated Mungbean yield	- tonne(s)/ha	- tonne(s)/ha	- tonne(s)/ha
Estimated Mungbean production	- tonne(s)	- tonne(s)	- tonne(s)
Peanut cultivation area	0 ha	0 ha	0 ha
Estimated Peanut yield	- tonne(s)/ha	- tonne(s)/ha	- tonne(s)/ha
Estimated Peanut production	- tonne(s)	- tonne(s)	- tonne(s)
Cassava cultivation area	22 ha	3 ha	4 ha
Estimated Cassava yield	6.0 tonne(s)/ha	6.0 tonne(s)/ha	5.0 tonne(s)/ha
Estimated Cassava production	132 tonne(s)	18 tonne(s)	20 tonne(s)
Sweet potatoes cultivation area	0 ha	0 ha	0 ha
Estimated Sweet potatoes yield	- tonne(s)/ha	- tonne(s)/ha	- tonne(s)/ha
Estimated Sweet potatoes production	- tonne(s)	- tonne(s)	- tonne(s)
Sesame cultivation area	0 ha	0 ha	0 ha
Estimated Sesame yield	- tonne(s)/ha	- tonne(s)/ha	- tonne(s)/ha
Estimated Sesame production	- tonne(s)	- tonne(s)	- tonne(s)

### 2.5.18 Yields of Corn, Soya beans and Mungbeans in tonne(s)/ha, by Commune, in 2008

There were no yields for any of these crops in this District in 2008

### 2.5.19 Yields of Peanuts and Cassava in tonne(s)/ha by Commune, in 2008



### 2.5.20 Yields of Sweet Potatoes and Sesame in tonne(s)/ha, by Commune, in 2008

There were no yields for any of these crops in this District in 2008

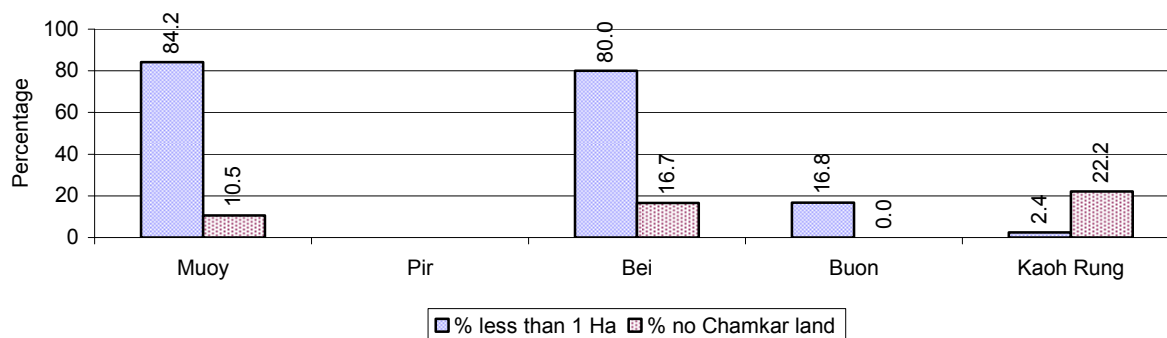
### 2.5.21 Percentage Farmers who own less than 1 Ha or no Chamkar land

Description	2006	2007	2008	
	%	%	%	Number
Families, who own less than 1ha of Chamkar land	33%	35%	24%	87 families
Families, with no Chamkar land	46%	39%	14%	49 families

**Note 1:** Calculated as a percentage of the total number of families whose main occupation is Chamkar (not rice) farming

**Note 2:** Chamkar land is no-rice land, i.e. other crops

### 2.5.22 Percentage Farmers owning less than 1 ha or no Chamkar land, by Commune, in 2008



**Note:** Percentage is calculated among families, who Chamkar farm as a main occupation, not the total population of the commune.

### 2.5.23 Percentage of Families raising Cattle/Buffalo, over 3 years

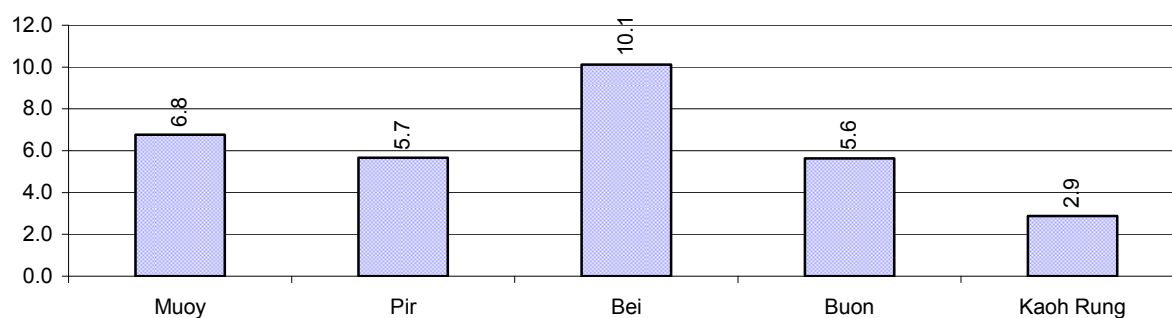
Description	2006	2007	2008	
	%	%	%	Number
Families raising cattle/buffalo	2%	2%	2%	266 families
Families raising cattle/buffalo as labor forces	1%	1%	1%	163 families

**Note:** Calculated against the total number of families.

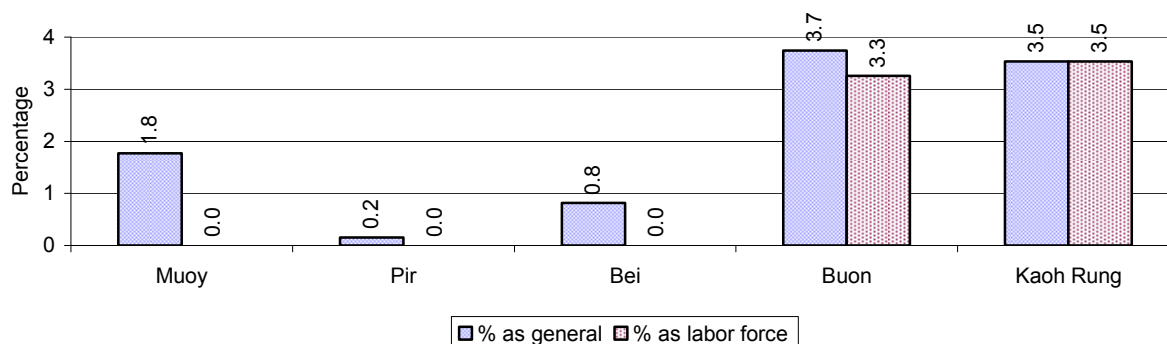
**2.5.24 Number of Cattle/buffalo being raised, over 3 years**

Description	2006	2007	2008
Total number of cattle/buffalo	1,932 head(s)	1,810 head(s)	1,624 head(s)
Average cattle/buffalo per families	7.8 head(s)/families	8.9 head(s)/families	6 head(s)/families

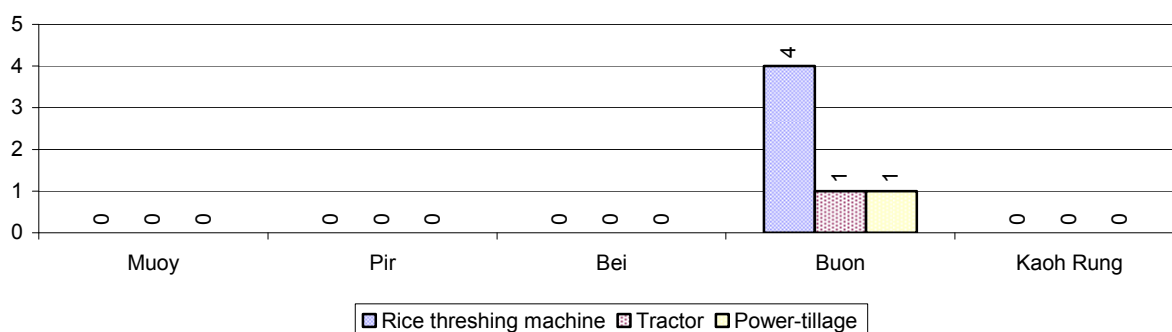
**Note:** Calculated by dividing total number of cattle/buffalo by total number of cattle/buffalo raising families

**2.5.25 Average number of Cattle/Buffalo per Family, by Commune, in 2008**

**Note:** Calculated by dividing total number of cattle/buffalo by total number of cattle/buffalo raising families

**2.5.26 Percentage Families raising Cattle/Buffalo, for general and labor purposes in 2008, by Commune**

**Note:** Calculated using the total number of families raising cattle/buffalo against the total number of families.

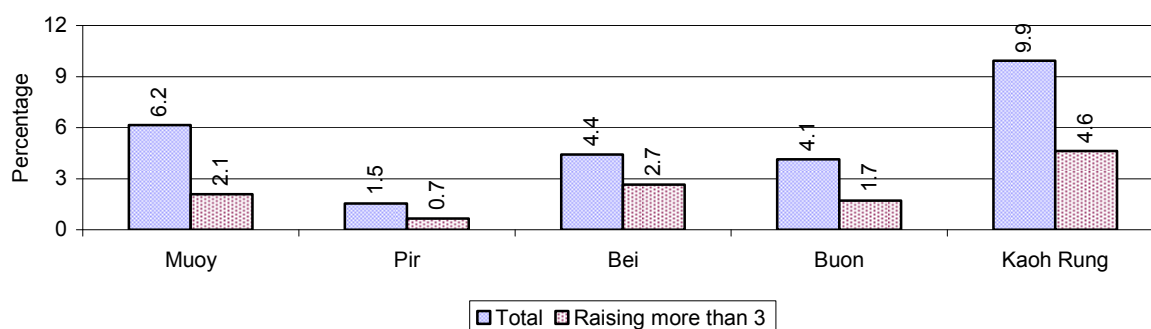
**2.5.27 Type and number of agricultural Machines, by Commune, in 2008**

### 2.5.28 Livestock-producing Households over 3 years

Description	2006 %	2007 %	2008	
			%	Number
Total number of families raising pigs	6%	5%	4%	580 families
number of families raising more than 3 pigs	2%	2%	2%	253 families
Total number of families raising chickens	35%	24%	24%	3,139 families
number of families raising more than 3 chickens	23%	18%	18%	2,280 families
Total number of families raising ducks	2%	1%	1%	166 families
number of families raising more than 5 ducks	2%	1%	1%	107 families
Total number of families raising goats or sheep	0%	0%	0%	10 families
Total number of families raising horses	0%	0%	0%	0 families

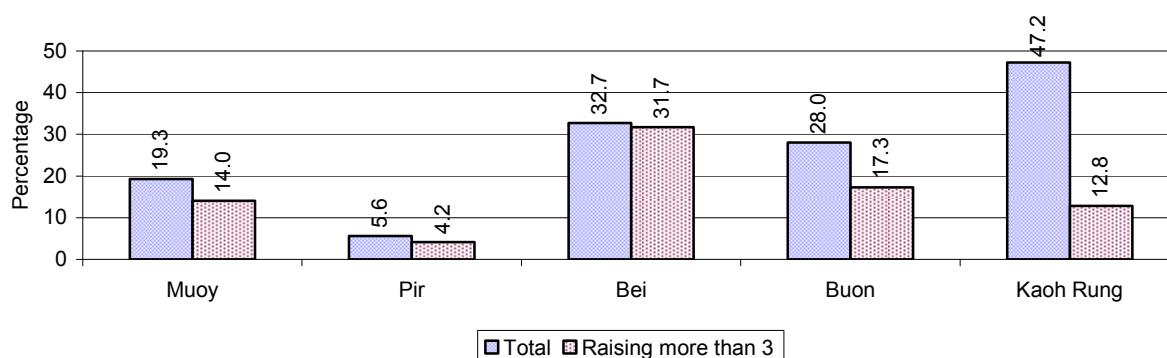
**Note:** Calculated against the total number of families

### 2.5.29 Percentage Families raising Pigs, by Commune, in 2008



**Note:** Calculated against the total number of families in the commune

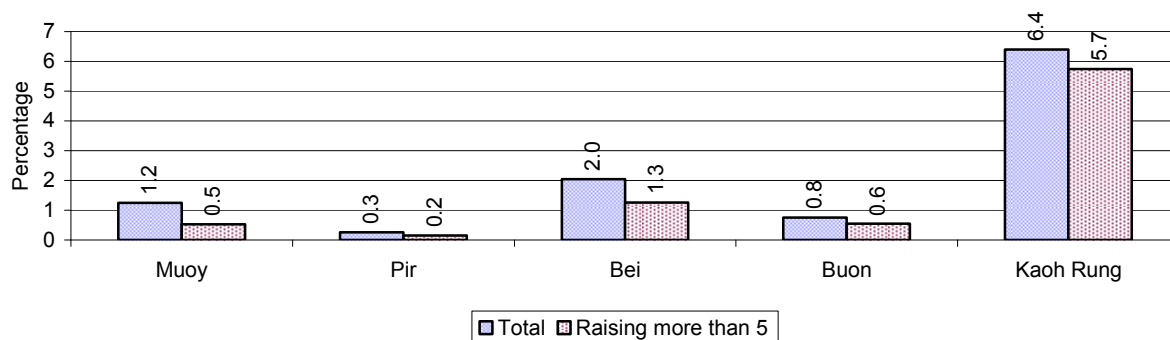
### 2.5.30 Percentage Families raising Chickens, by Commune, in 2008



**Note:** Calculated against the total number of families in the commune

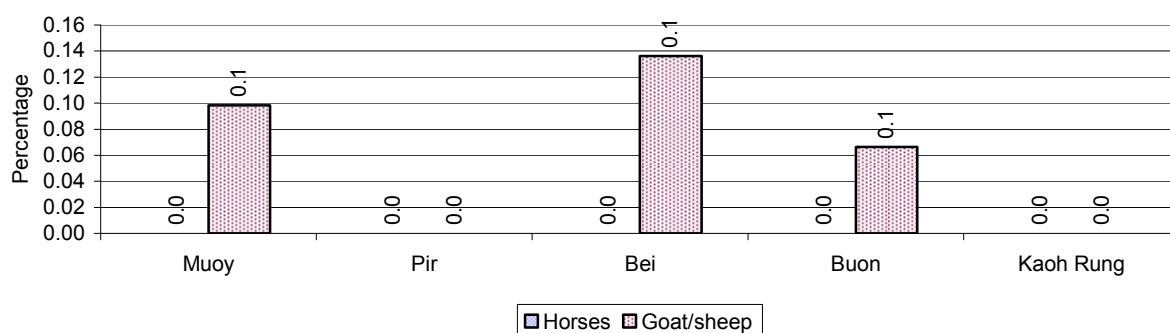


### 2.5.31 Percentage Families raising Ducks, by Commune, in 2008



**Note:** Calculated against the total number of families in the commune

### 2.5.32 Percentage Families raising Horses, Goats or Sheep, by Commune, in 2008



**Note:** Calculated against the total number of families in the commune

### 2.5.33 Livestock Farms over 3 years

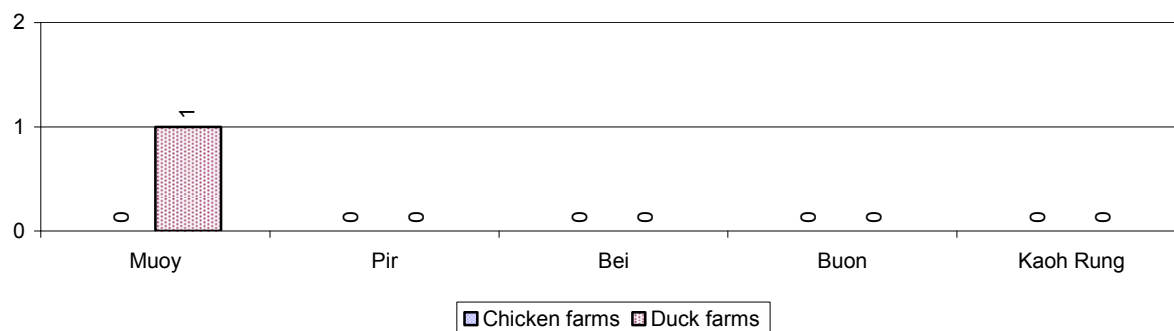
Description	2006	2007	2008
Number of cattle/buffalo farms	8 farm(s)	6 farm(s)	0 farm(s)
Number of pig farms	2 farm(s)	0 farm(s)	0 farm(s)
Number of goat/sheep farms	0 farm(s)	0 farm(s)	0 farm(s)
Number of chicken farms	0 farm(s)	0 farm(s)	0 farm(s)
Number of duck farms	2 farm(s)	2 farm(s)	1 farm(s)

### 2.5.34 Number Livestock Farms, by Commune in 2008

There were no farms of this type in this District in 2008

**Note:** Number of farms are recorded by the village chief, not by counting number of livestock in each farm

### 2.5.35 Number Chicken and Duck Farms, by Commune, for 2008



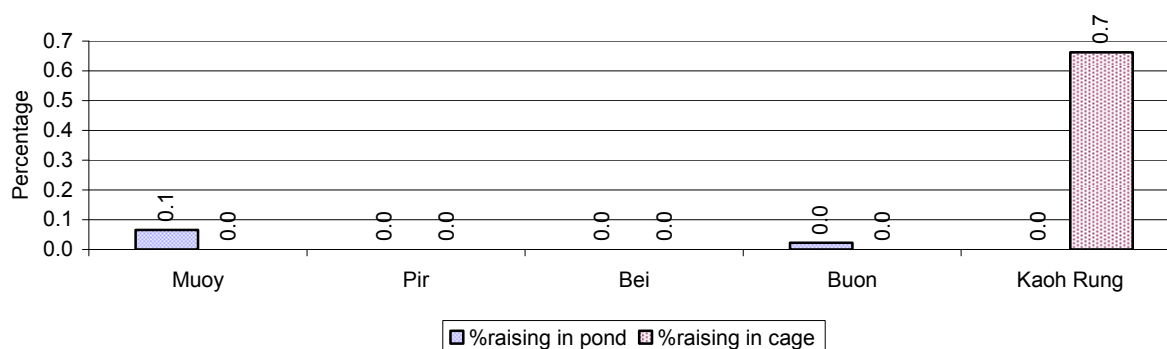
**Note:** Number of farm places recorded by village chief, not by counting number of livestock in each farm

### 2.5.36 Families raising Fish over 3 years

Description	2006	2007	2008
Total number of families raising fish	19 families	7 families	6 families
% families raising fish	0%	0%	0%
Number families raising fish in pond	2 families	4 families	3 families
% families raising fish in pond	0%	0 %	0%
Number fish pond	5 pond(s)	10 pond(s)	4 pond(s)
No. of ponds per family	2.5 pond/families	2.5 pond/families	1.3 pond/families
Number of families raising fish in cage	17 families	3 families	3 families
%families raising fish in cage	0 %	0 %	0%
Number of fish cage	22 cage(s)	3 cage(s)	6 cage(s)
No. of fish cage per family	1.3 cage /families	1.0 cage /families	2.0 cage /families

**Note:** % of families raising fish or fish in ponds or cages is calculated a percentage of the total number of families.

### 2.5.37 Percentage of Families raising Fish, by Commune, in 2008



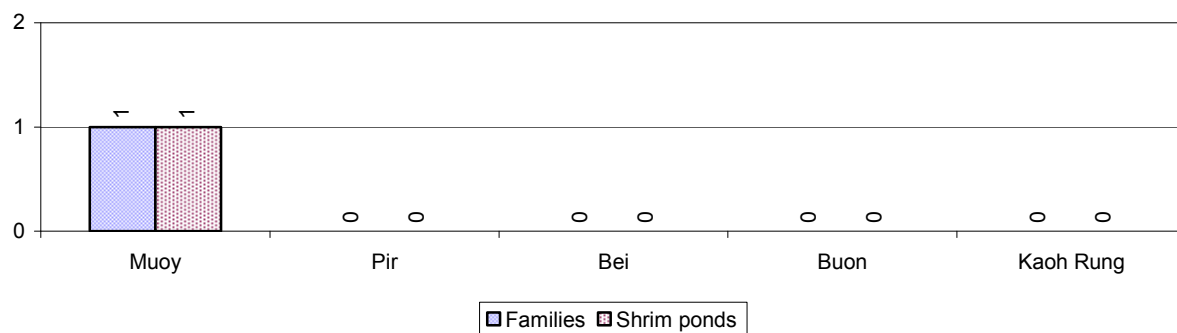
**Note:** Calculated as a percentage of the total number of families in the commune.

### 2.5.38 Shrimp and Prawn Farming over 3 years

Description	2006	2007	2008
Number of families raising shrimps	1 families	1 families	1 families
% Families raising shrimps	0%	0%	0%
Number of shrimp ponds	1 pond	2 pond	1 pond
Total area raising shrimps	1 ha	1 ha	1 ha
Area per family	1ha/families	1ha/families	1ha/families
Number of families raising prawns	0 families	0 families	0 families
% families raising prawns	0%	0%	0%
Number prawn ponds	0 pond	0 pond	0 pond
Ponds per families	- pond/families	-pond/families	-pond/families
Number of prawn cages	0 cage	0 cage	0 cage
Cages per families	0 cage /families	0 cage /families	0 cage /families

**Note:** Percentage of families raising either prawns or shrimp is calculated against the number of families, who do aquaculture farming, NOT the total population.

### 2.5.39 Numbers of Families raising Shrimps and number of Shrimp Ponds, by Commune, in 2008



### 2.5.40 Number of Families raising Prawn and Number of Prawn Ponds/Cages, by Commune, in 2008

There were none of these in this District in 2008

### 3 Social Aspects

#### 3.1 Education

##### 3.1.1 Kindergarten in the District over 3 years

Description	2006	2007	2008
Number of community kindergarten schools	1 school(s)	2 school(s)	4 school(s)
Number of community kindergarten class rooms	2 room(s)	4 room(s)	16 room(s)
Number of community kindergarten classes	2 class(es)	4 class(es)	19 class(es)
Number of community kindergarten teachers	0 person(s)	3 person(s)	19 person(s)
Number of women community kindergarten teachers	0 women	1 women	8 women
Number of state and private kindergarten schools	4 school(s)	5 school(s)	5 school(s)
Number of state and private kindergarten class rooms	11 room(s)	13 room(s)	15 room(s)
Number of state and private kindergarten classes	12 class(es)	19 class(es)	21 class(es)
Number of state and private kindergarten teachers	16 person(s)	13 person(s)	16 person(s)
Number of women state and private kindergarten teachers	15 women	13 women	16 women

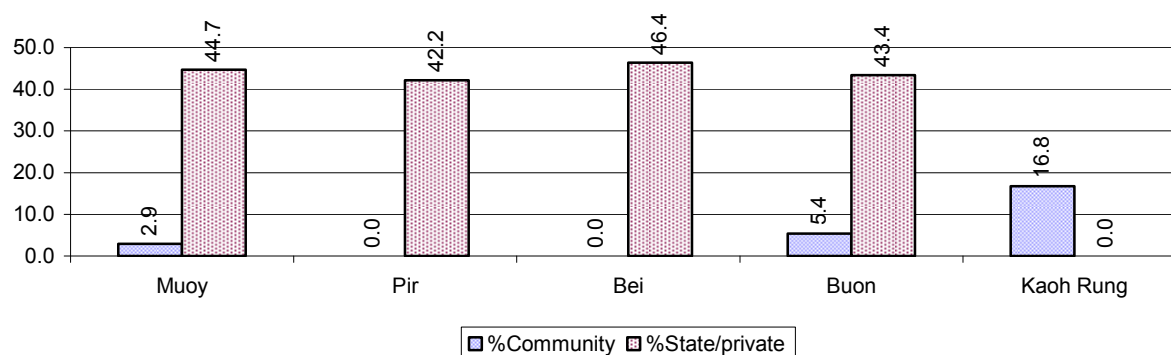
##### 3.1.2 Percentage enrolment at Kindergarten level over 3 years

*This table shows the percentage of the total 3-5 year old population attending kindergarten.*

Description	2006 %	2007 %	2008	
			%	Number
Total percentage of children, 3-5 yrs, go to kindergarten	40%	45%	46%	2,029 person(s)
Percentage of children, 3-5 yrs, go community kindergarten	3%	1%	3%	133 person(s)
Percentage children, 3-5 yrs, go state/private kindergarten	37%	44%	43%	1,896 person(s)

**Note:** Calculated against the total for that age group

##### 3.1.3 Percentage of Children 3-5 yrs attending Kindergarten, by Commune, in 2008



### 3.1.4 Basic Education over 3 years

#### Primary School

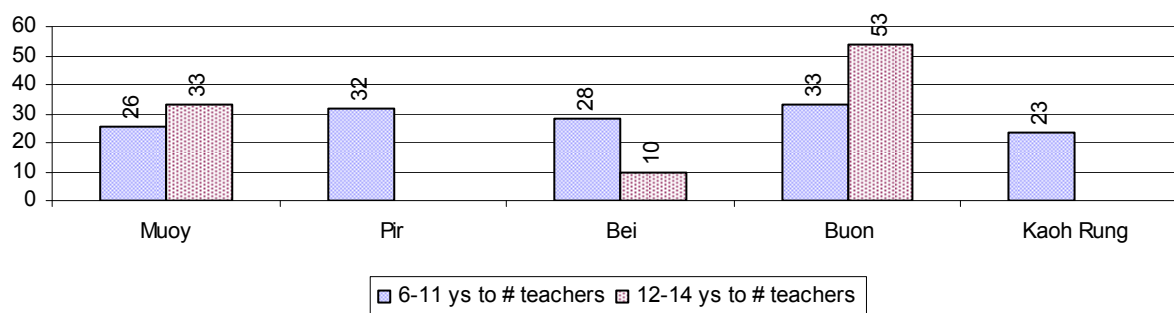
Description	2006	2007	2008
Number of primary schools	15 school(s)	14 school(s)	15 school(s)
Number of primary school rooms	210 room(s)	152 room(s)	168 room(s)
Number of primary classes	344 class(es)	230 class(es)	270 class(es)
Number of primary teachers	335 person(s)	224 person(s)	270 person(s)
Ratio of children 6-11 yrs to school	576	556	523
Ratio of children 6-11 yrs to school room	41	51	47
Ratio of children 6-11 yrs to class	25	34	29
Ratio of children 6-11 yrs to teacher	26	35	29

**Note:** According to education norm, children 6-11 yrs should attend primary school, while 12-14 yrs should be in lower secondary school, but in reality this varies.

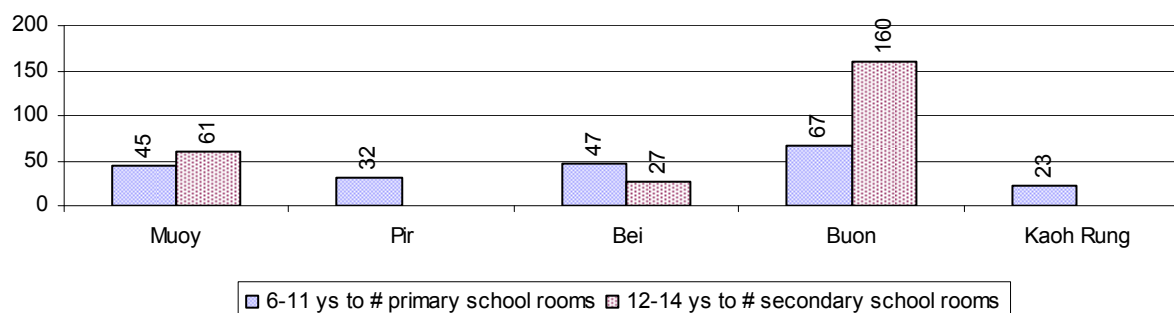
#### Lower Secondary School

Description	2006	2007	2008
Number of lower secondary schools	4 school(s)	5 school(s)	4 school(s)
Number of lower secondary school rooms	88 room(s)	64 room(s)	68 room(s)
Number of lower secondary classes	94 class(es)	71 class(es)	64 class(es)
Number of lower secondary teachers	149 person(s)	140 person(s)	171 person(s)
Ratio children 12-14 yrs to school	1,169	869	1,191
Ratio of children 12-14 yrs to school room	53	68	70
Ratio of children 12-14 yrs to class	50	61	74
Ratio of children 12-14 yrs to teacher	31	31	28

### 3.1.5 Ratio of 6-11 year old and 12-14 year old Children to number of Teachers, by Commune, in 2008



### 3.1.6 Ratio of 6-11 year old and 12-14 year old Children to number of School Rooms, by Commune, in 2008



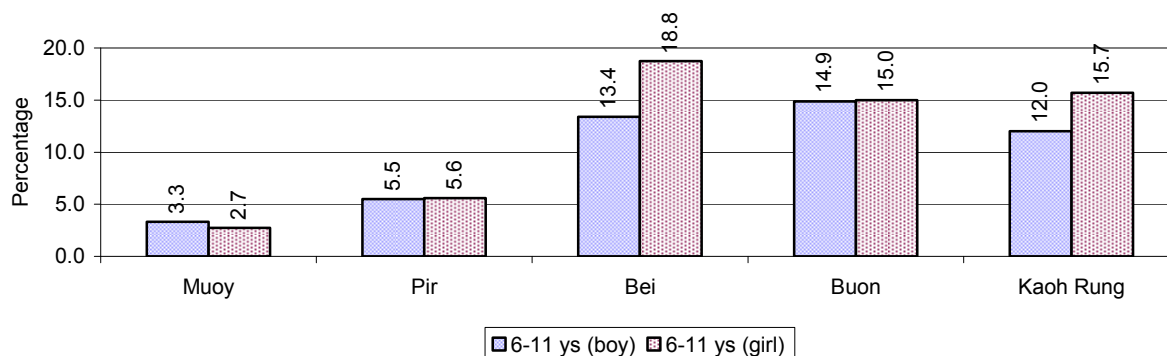
### 3.1.7 Enrolment status at Primary Level over 3 years

Description	2006 %	2007 %	2008	
			%	Number
Total children aged 6-11 years old	14%	13%	13%	7,841 person(s)
Total children aged 6-11 who are in school	87%	89%	89%	6,979 person(s)
Total children aged 6-11 who are not in school	13%	11%	11%	862 person(s)
Total girls aged 6-11 years old	14%	13%	12%	3,866 person(s)
Total girls aged 6-11 who are in school	87%	89%	88%	3,404 person(s)
Total girls aged 6-11 who are not in school	13%	11%	12%	462 person(s)
Total boys aged 6-11 years old	14%	14%	13%	3,975 person(s)
Total boys aged 6-11 who are in school	87%	88%	90%	3,575 person(s)
Total boys aged 6-11 who are not in school	13%	12%	10%	400 person(s)

**Note 1:** Percentage is calculated on the basis of the total number of children within 6-11 year age group for the first 3 rows and for the total girls and the total boys aged 6-11 yrs.

**Note 2:** Number of girls aged 6-11 who are in & not in school is calculated against the total number of girls aged 6-11 yrs. Number boys, 6-11 yrs who are in & not in school are calculated against the total number of boys aged 6-11 yrs.

### 3.1.8 Percentage of 6-11 year old Children not in School, by Commune, in 2008



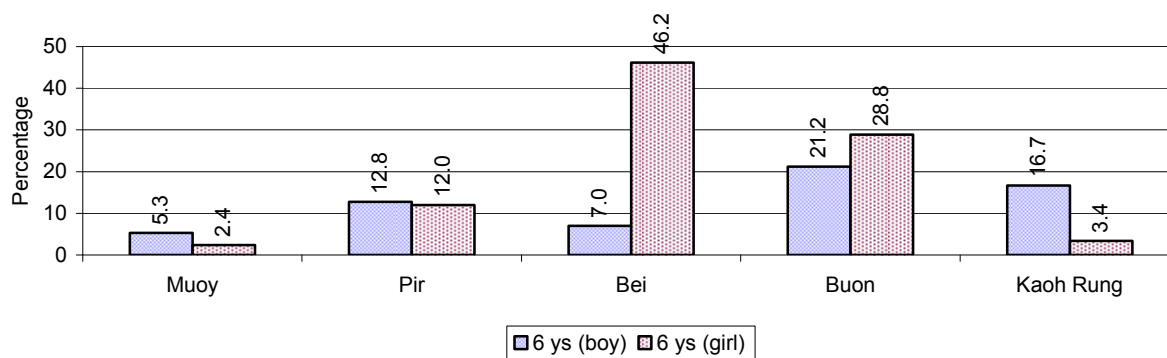
**Note:** calculated on the basis of the total number of children within 6-11 year age group in the commune.

### 3.1.9 Enrolment of 6 year old Children over 3 years

Description	2006 %	2007 %	2008	
			%	Number
Total % and number of children aged 6 years old	4%	4%	4%	2,484 person(s)
Total % of children aged 6 years old in school	78%	82%	86%	2,142 person(s)
Total % of children aged 6 years old not in school	22%	18%	14%	342 person(s)

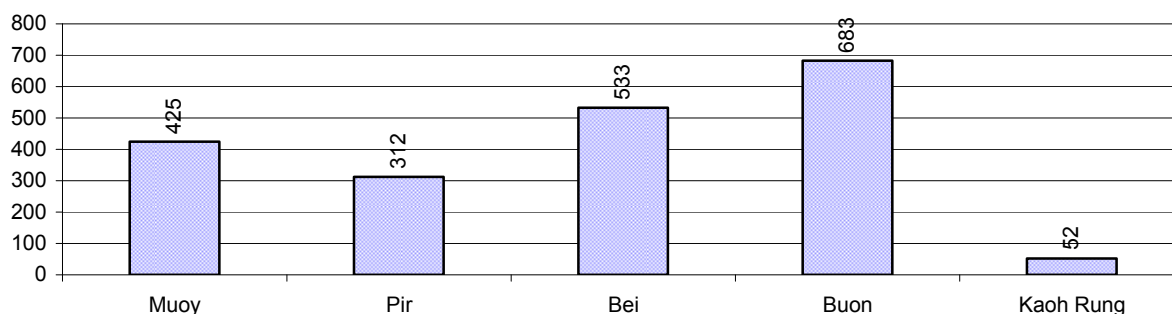
**Note:** First row calculated as a percentage of total population. Second and third row calculated as a percentage of the total number of 6 year olds.

### 3.1.10 Percentage of 6 year old Children not in School, by Commune, in 2008



**Note:** Calculated as a percentage of total 6 year old population

### 3.1.11 Number of 5 year old Children in each Commune in 2008

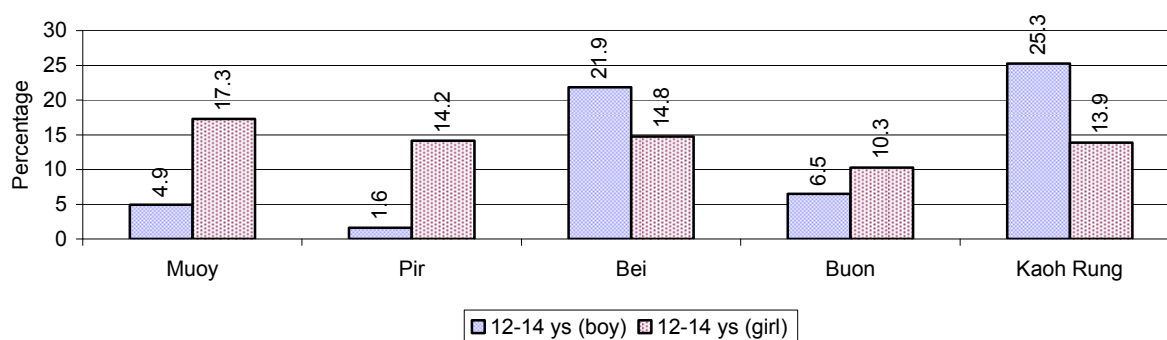


### 3.1.12 Enrolment at Lower Secondary Level over 3 years

Description	2006 %	2007 %	2008	
			%	Number
Total <b>children</b> aged 12-14 years old	8%	7%	8%	4,765 person(s)
Children aged 12-14 years old in school	88%	91%	88%	4,208 person(s)
Children aged 12-14 years old not in school	12%	9%	12%	557 person(s)
Total <b>girls</b> aged 12-14 years old	8%	7%	8%	2,510 person(s)
Girls aged 12-14 years old in school	87%	90%	86%	2,166 person(s)
Girls aged 12-14 years old not in school	13%	10%	14%	344 person(s)
Total <b>boys</b> aged 12-14 years old	7%	7%	7%	2,255 person(s)
Boys aged 12-14 years old in school	88%	92%	91%	2,042 person(s)
Boys aged 12-14 years old not in school	12%	8%	9%	213 person(s)

**Note:** Percentage is calculated on the basis of number of the total number of children within 12-14 yrs group, except for the first row of each section which is calculated on the basis of the total population.

### 3.1.13 Percentage of 12-14 year olds not in School, by Commune, in 2008



**Note:** Calculated as a percentage of the total 12-14 year old population in each commune

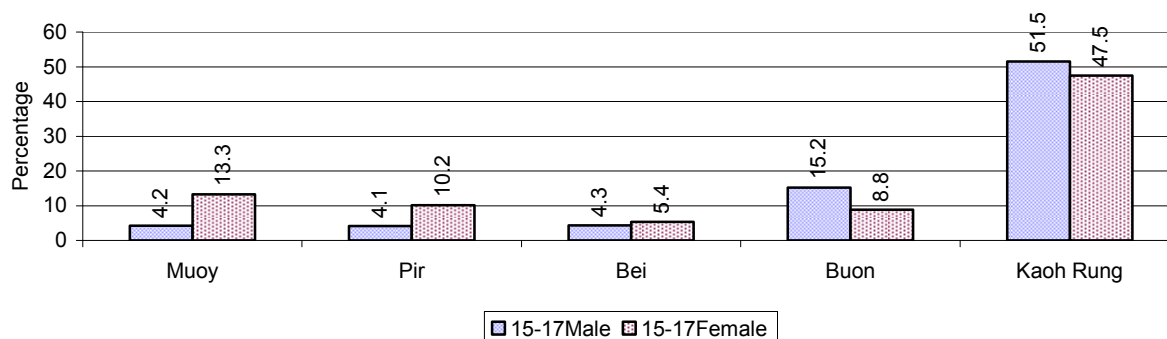
### 3.1.14 Upper Secondary Schools over 3 years

Description	2006	2007	2008
Number of upper secondary schools	2 school(s)	2 school(s)	2 school(s)
Number of upper secondary school rooms	48 room(s)	68 room(s)	66 room(s)
Number of upper secondary classes	49 class(es)	75 class(es)	66 class(es)
Number of upper secondary teachers	137 person(s)	144 person(s)	159 person(s)
Ratio of 15-17 yr olds to number of school	3,215	2,720	2,771
Ratio of 15-17 yr olds to number of school room	134	80	84
Ratio of 15-17 yr olds to number of classes	131	73	84
Ratio of 15-17 yr olds to number of teacher	47	38	35

### 3.1.15 Enrolment of 15-17 year old teenagers over 3 years

Description	2006	2007	2008
Number of teenage, 15-17 years old	6,430 person(s)	5,440 person(s)	5,541 person(s)
Number of teenage, 15-17 years old, who are not studying	656 person(s)	562 person(s)	580 person(s)
Percentage of teenage, 15-17 years old not studying	10%	10%	10%

### 3.1.16 Percentage of 15-17 year old Teenagers not at School, by Commune, in 2008





### 3.1.17 Literacy Classes as of 2008

Literacy classes	Organized by:		Other Program(s)	Total
	PDoEYS	NGOs		
Number of On-going literacy classes	0 class(es)	0 class(es)	0 class(es)	0 class(es)
Number of literacy students in on-going classes	0 person(s)	0 person(s)	0 person(s)	0 person(s)
Completed literacy class(es)	0 classes	0 classes	0 classes	0 classes
Number of literacy students that have completed literacy classes	0 person(s)	0 person(s)	0 person(s)	0 person(s)
Number of students that passed	0 person(s)	0 person(s)	0 person(s)	0 person(s)

### 3.1.18 Number of on-going and completed Literacy Classes, by Commune, in 2008

There were no classes in this District in 2008

### 3.1.19 Students of on-going & completed Literacy Classes, by Commune, in 2008

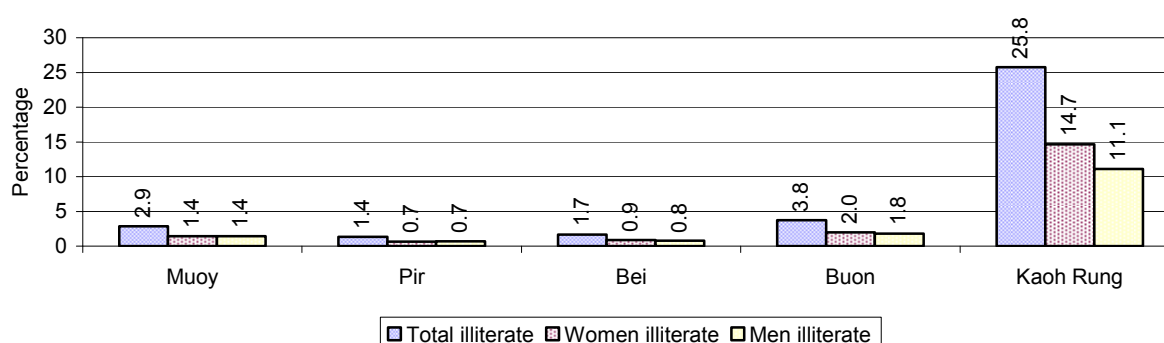
There were no students who had taken or were taking literacy classes in this District in 2008

### 3.1.20 Percentage of illiterate People between 15-60, over 3 years

Illiteracy Status	2006 %	2007 %	2008	
			%	Number
Illiterate people, 15-60 years old	3%	3%	3%	1,349 person(s)
Illiterate females, 15-60 years old	1%	1%	2%	713 person(s)
Illiterate people, 15-17 years old	1%	2%	2%	116 person(s)
Illiterate females, 15-17 years old	1%	1%	1%	58 person(s)
Illiterate people, 18-24 years old	2%	2%	2%	172 person(s)
Illiterate females, 18-24 years old	1%	1%	1%	91 person(s)
Illiterate people, 25-60 years old	3%	3%	4%	1,061 person(s)
Illiterate females, 25-60 years old	2%	2%	2%	564 person(s)

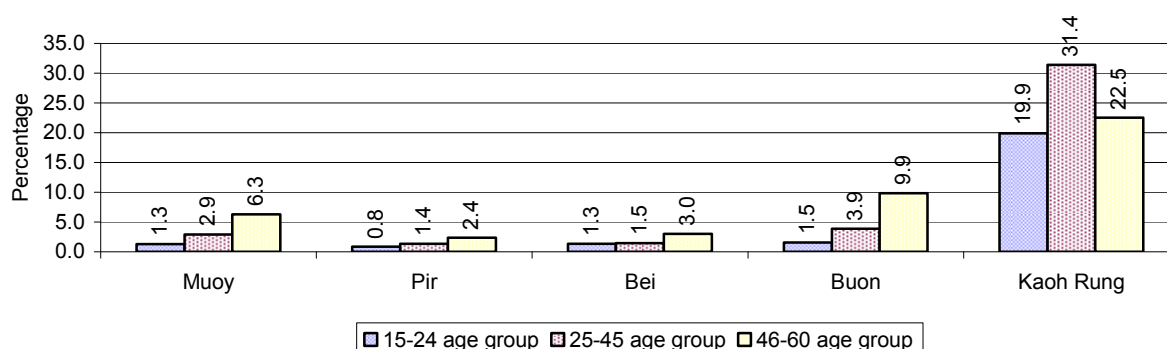
**Note:** Percentage is calculated on the basis of number of people in age each group.

### 3.1.21 Percentage illiterate People among 15-60 yrs old, by Commune, in 2008



**Note:** Percentages are calculated on the basis of number of people in that age group.

### 3.1.22 Percentage illiterate People for 15-24 yrs, 25-45 yrs and 46-60 yrs, by Commune, in 2008



**Note:** Percentage of illiterate people in each age group is calculated on the basis of number of people in that age group.

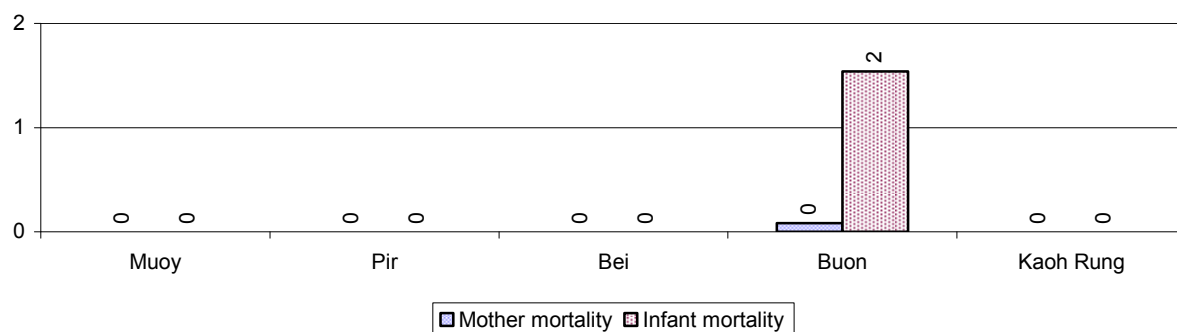
## 3.2 Health

### 3.2.1 Health Situation of Women and Children, over 3 years

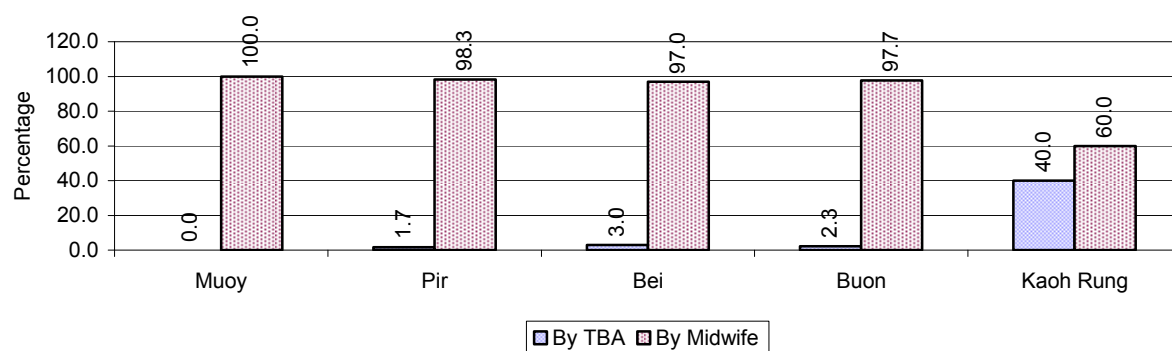
Description	2006	2007	2008
Number families with a birth during the year	468 families	496 families	583 families
Number of women who had their baby delivered by a TBA	34 person(s)	31 person(s)	23 person(s)
Percentage of women who had their baby delivered by a TBA	7 %	6 %	4 %
Number of women who had their baby delivered by a midwife	434 person(s)	465 person(s)	560 person(s)
Percentage of women had their baby delivered by a midwife	93 %	94 %	96 %
Number of mothers who died within 1 month of giving birth	2 person(s)	0 person(s)	1 person(s)
Mothers who died within 1 month of giving birth per 100,000 families having a delivery	427	0	172
Number of infants born during the year	469 person(s)	496 person(s)	583 person(s)
Number of Infants who died within 1 month	5 person(s)	5 person(s)	1 person(s)
Infants mortality within 1 month per 1,000 births	11	10	2
Number of children who died below the age of 5.	15 person(s)	10 person(s)	5 person(s)
Number of infants, aged 9-12 months, born during the year	175 person(s)	207 person(s)	270 person(s)
Nr. infants, aged 9-12 months, not receiving full immunization	10 person(s)	3 person(s)	0 person(s)
% of 9-12 months infants, not receiving full immunization	6 %	1 %	0 %

**Note:** TBA = Traditional Birth Attendant

### 3.2.2 Mothers dying within 0 days to 1 month of giving Birth and Infants dying within 1 month in 2008, by Commune

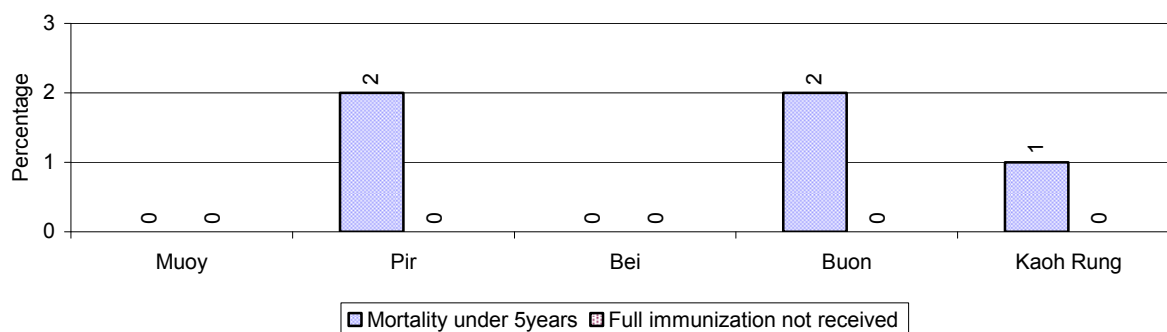


### 3.2.3 Percentage of Women delivering with a TBA or Midwife, by Commune



**Note:** Calculated as a percentage of total deliveries

### 3.2.4 Percentage of Children dying below 5 & of 9-12 months not receiving full Immunization, by Commune, in 2008



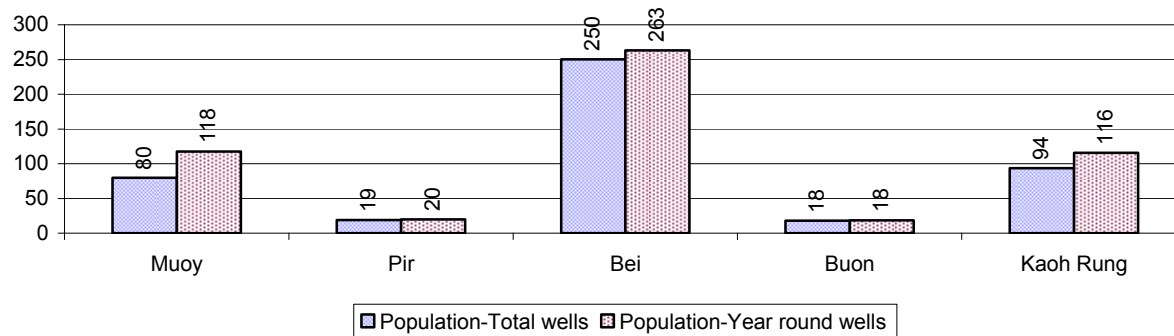
**Note:** Mortality rate calculated as a percentage of the total 5 year old population. Lack of immunization received calculated as a percentage of the total number 9-12 months olds there are

## 3.3 Water and Sanitation

### 3.3.1 Number of different types of Wells over 3 years

Type of wells	Number of wells by year		
	2006	2007	2008
<i>Total number of pumped or mixed wells</i>	478	507	477
Year-round usable pumped or mixed wells	433	489	464
Dry season unusable pump or mixed wells	45	18	13
Pump or mixed wells needing repair/rehabilitation	27	21	18
<i>Total number of ring wells</i>	2,117	1,433	1,517
Year-round usable ring wells	1,964	1,314	1,408
Dry season unusable ring wells	153	119	109
Ring wells needing repair/rehabilitation	99	88	50
<i>Total number of unprotected dug wells</i>	24	17	228
Year-round usable unprotected dug wells	17	14	221
Dry season unusable unprotected dug wells	7	3	7

### 3.3.2 Ratio of People to Wells, by Commune, in 2008

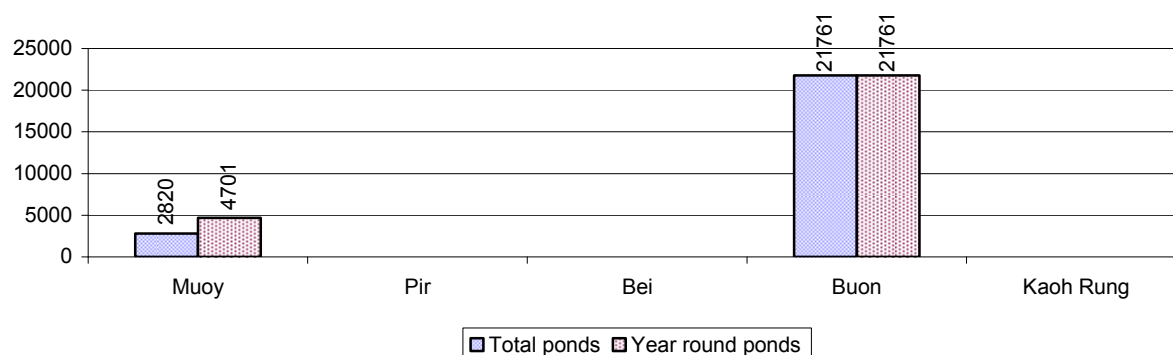


**Note:** Year-round wells excluding unprotected wells

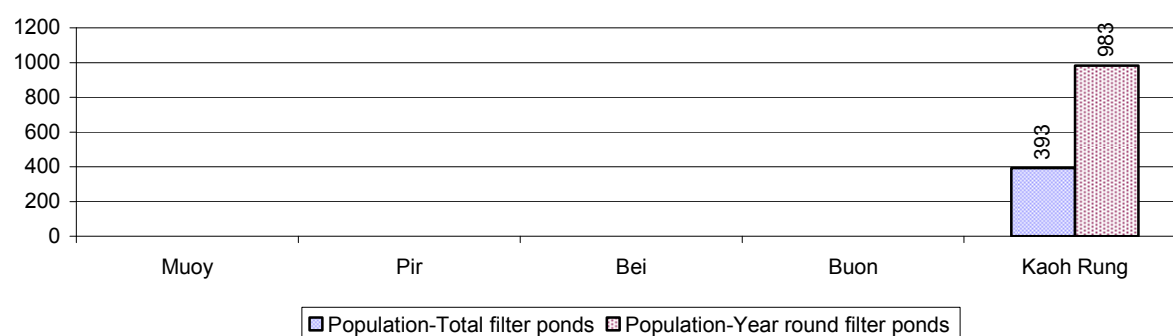
### 3.3.3 Potable Ponds over 3 years

Type of Pond	2006	2007	2008
<i>Total number of normal-type ponds</i>	4 pond	7 pond	6 pond
Year-round usable normal-type ponds	2 pond	5 pond	4 pond
Dry season unusable normal-type ponds	2 pond	2 pond	2 pond
Normal-type ponds needing repair/rehabilitation	0 pond	0 pond	0 pond
<i>Total number of filter ponds</i>	0 pond	1 pond	5 pond
Year-round usable filter ponds	0 pond	1 pond	2 pond
Filter ponds, dry season unusable	0 pond	0 pond	3 pond
Filter ponds needing repair/rehabilitate	0 pond	0 pond	3 pond

### 3.3.4 Ratio of People to normal Ponds, by Commune in 2008



### 3.3.5 Ratio of People to Filter Ponds, by Commune, in 2008

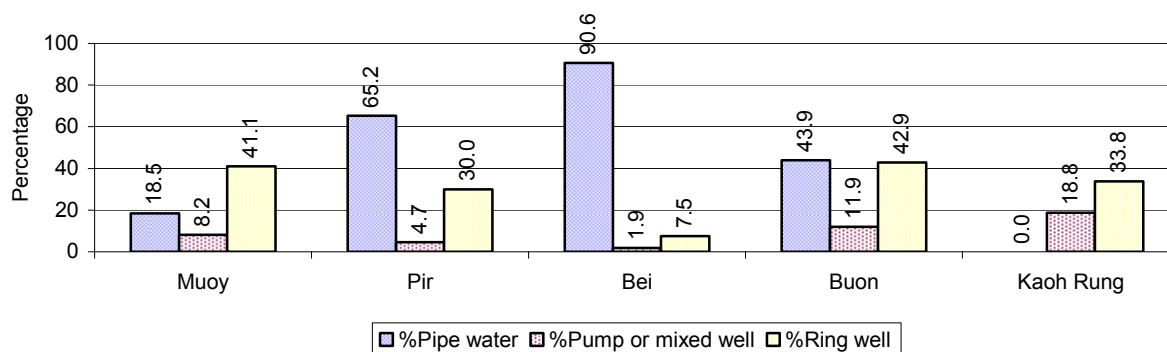


### 3.3.6 Source of potable Water for Households, over 3 years

Water sources	2006 %	2007 %	2008	
			%	Number
Families using water from purification system	47%	47 %	50 %	6,480 families
Families using water from pump, mixed wells	8%	12 %	8 %	1,020 families
Families using water from ring wells and open dug wells	34%	31 %	32 %	4,148 families
Families using water from pond	11%	5 %	0 %	29 families
Families using water from rain water storage	0%	1 %	1 %	78 families
Families using water from rivers, lakes, natural ponds and reservoirs	0%	5 %	9 %	1,155 families

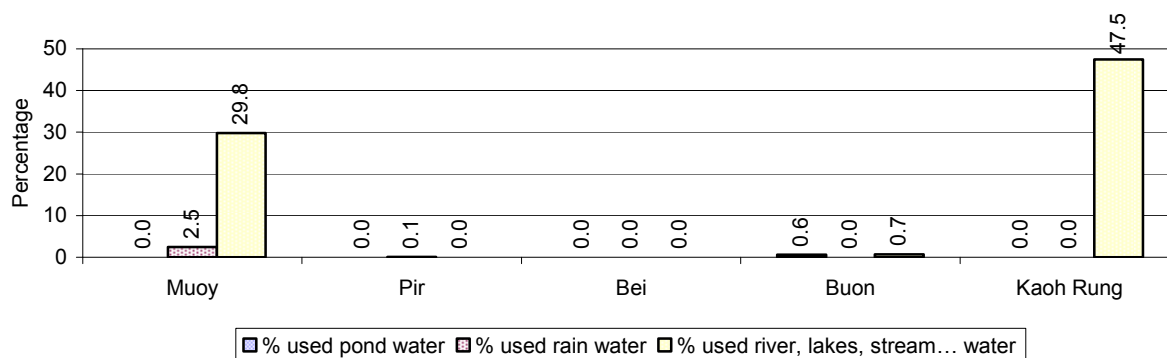
**Note:** Calculated as a percentage of the total number of families.

### 3.3.7 Percentage Families using different Water Sources, by Commune, in 2008



**Note:** Calculated as a percentage of the total number of families in each commune

### 3.3.8 Percentage Families using Water from Rain Water Storage, Ponds and natural Sources (rivers/lakes/natural ponds/reservoirs), by Commune, 2008



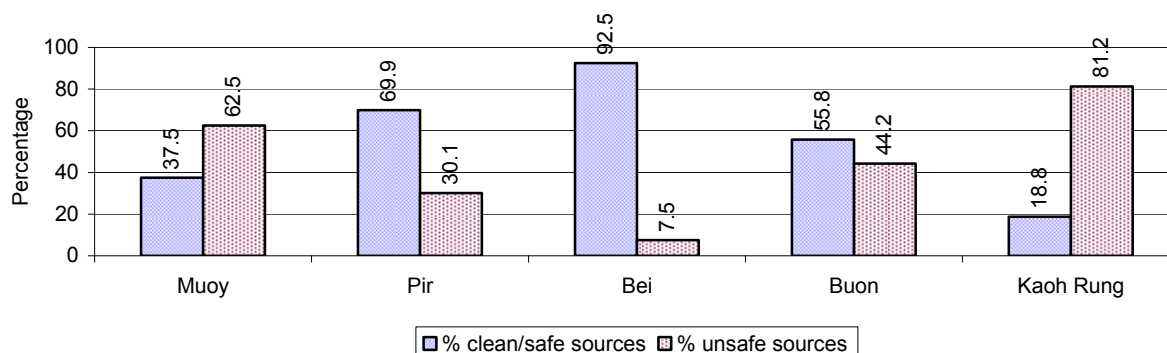
**Note:** Calculated as a percentage of the total number of families in each commune

### 3.3.9 Drinking Water Sources in the dry Season over 3 years

Percentage Families that get drinking water from:	2006 %	2007 %	2008	
			%	Number
from clean/safe sources	58 %	59 %	61 %	7,833 families
from unsafe sources	42 %	41 %	39 %	5,077 families

**Note:** Calculated as a percentage of the total number of families.

### 3.3.10 Percentage Families using safe and unsafe Water Sources in the dry Season, by Commune, in 2008



**Note:** Calculated as a percentage of the total number of families in each commune.

### 3.3.11 Drinking Water Purification by Households, over 3 years

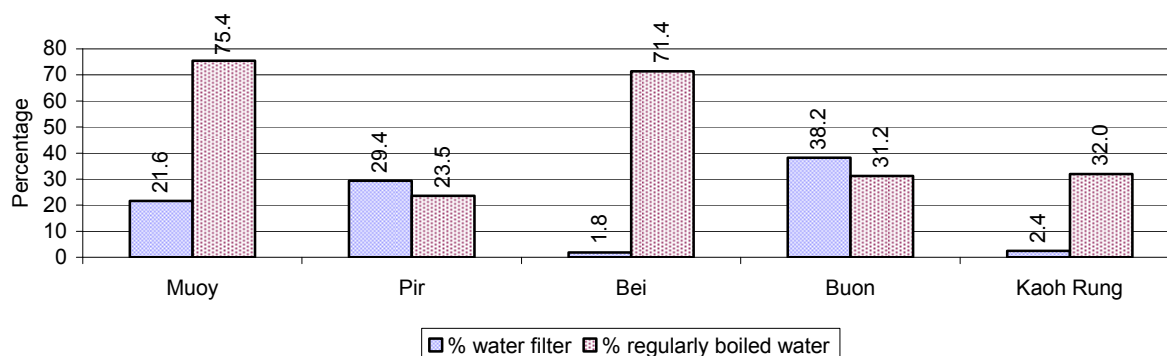
This table shows the different ways families make water safe for drinking.

Families, who:	2006	2007	2008	
	%	%	%	Number
Filter water for drinking	18%	17%	23 %	3,022 families
Boil water for drinking	46%	48%	50 %	6,412 families

**Note:** Calculated as a percentage of the total number of families

### 3.3.12 Percentage Families filtering Water or regularly boiling Water, by Commune, in 2008

This graph shows the different ways families make drinking water safe.



**Note:** Calculated on as a percentage of the total number of families in each commune.

### 3.3.13 Families' access to Water, over 3 years

Families access to water	2006	2007	2008	
	%	%	%	Number
Families with water at home or in less than 150m	80%	76%	86 %	11,043 families
Families with water 150m or more away from home	14%	24%	13 %	1,681 families

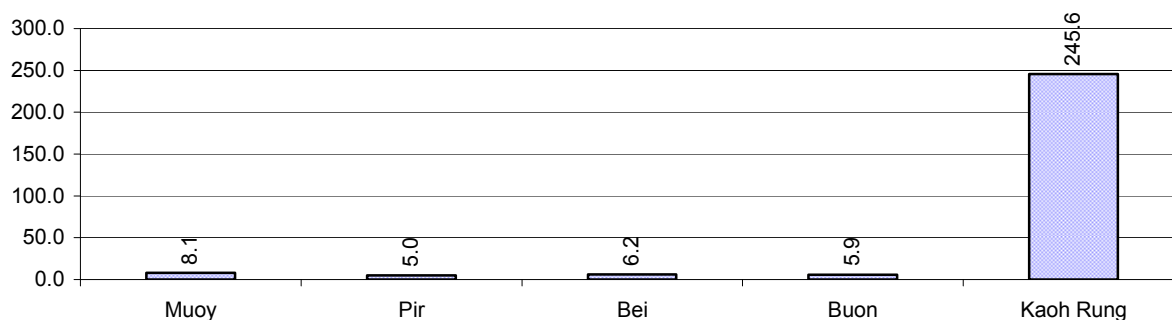
**Note:** Calculated as a percentage of the total number of families

### 3.3.14 Ratio of people to Latrines over 3 years

Description	2006	2007	2008	
	Ratio	Ratio	Ratio	Number
Ratio of people to latrines	7.1	6.6	6.4	9,781.0

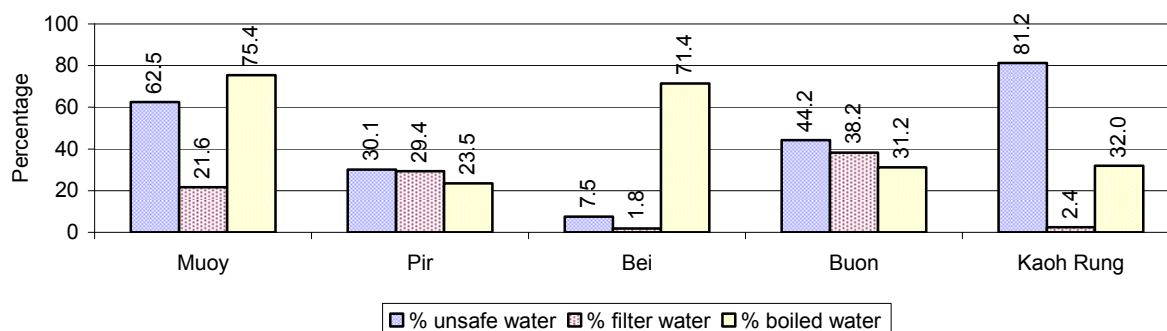
**Note:** Ratio calculated by dividing the number of houses with latrines by the total population

### 3.3.15 Ratio of People to Latrines, by Commune, in 2008



**Note:** Ratio calculated by dividing the number of houses with latrines by the total population in a Commune.

### 3.3.16 Percentage of Families drinking boiled, filtered or unsafe Water, by Commune, in 2008



**Note:** Calculated as a percentage of the total number of families in each commune.

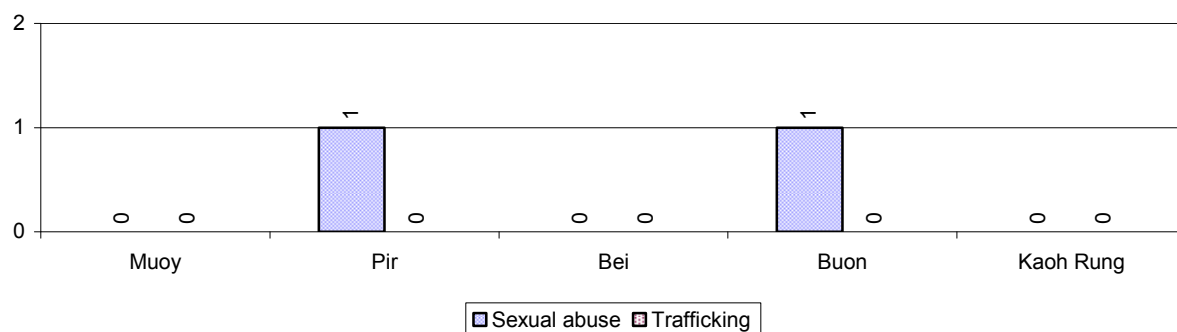
## 3.4 Vulnerable groups

### 3.4.1 Vulnerable Groups in need of special Protection over 3 years

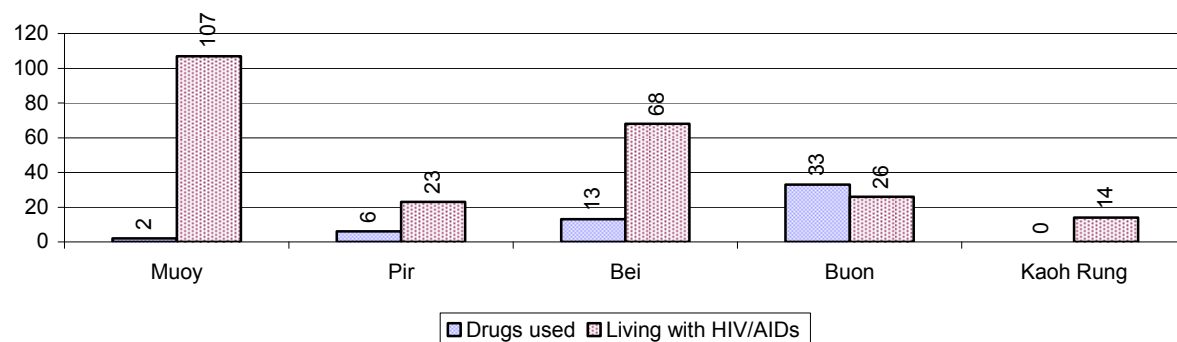
Vulnerable groups	2006	2007	2008
Victims of sexual abuse	2 person(s)	4 person(s)	2 person(s)
Victims of human trafficking	0 person(s)	0 person(s)	0 person(s)
Families with family member(s) using drugs	54 families	70 families	54 families
Families with family member(s) living with HIV/AIDS	176 families	172 families	238 families
Children under 18 yrs old whose parent died of AIDS	142 person(s)	112 person(s)	111 person(s)
Orphaned/abandoned children under 18 yrs old (all cases)	186 person(s)	191 person(s)	161 person(s)
Elderly persons without guardian	38 person(s)	45 person(s)	47 person(s)
Disabled people able to earn an income	20 person(s)	18 person(s)	26 person(s)
Disabled people unable to earn an income	20 person(s)	37 person(s)	40 person(s)
Disabled people under 18 yrs old	10 person(s)	14 person(s)	20 person(s)
Victims of natural disasters	25 families	0 families	6 families
Victims of land mines and unexploded weapons	5 person(s)	0 person(s)	2 person(s)



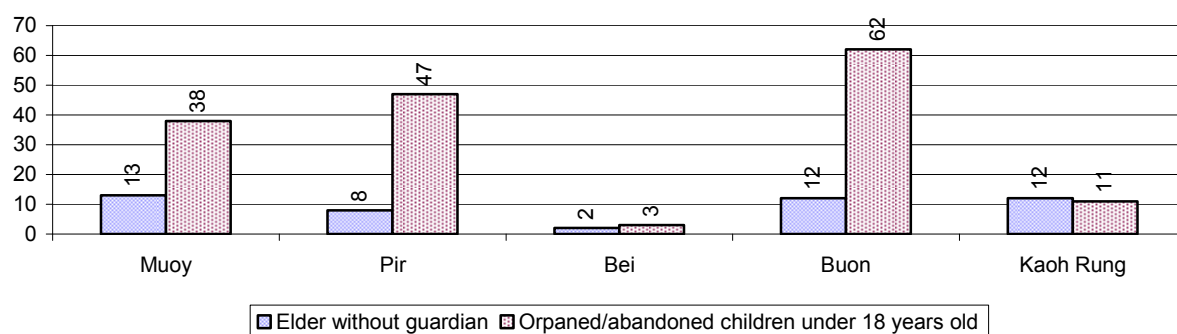
### 3.4.2 Registered Victims of sexual Abuse or Trafficking, by Commune, for 2008



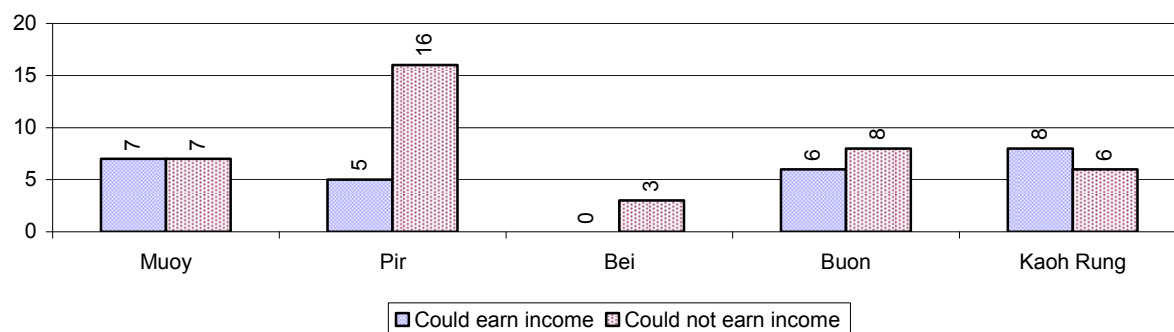
### 3.4.3 Registered Families with Member(s) using Drugs or living with HIV/AIDS, by Commune, for 2008



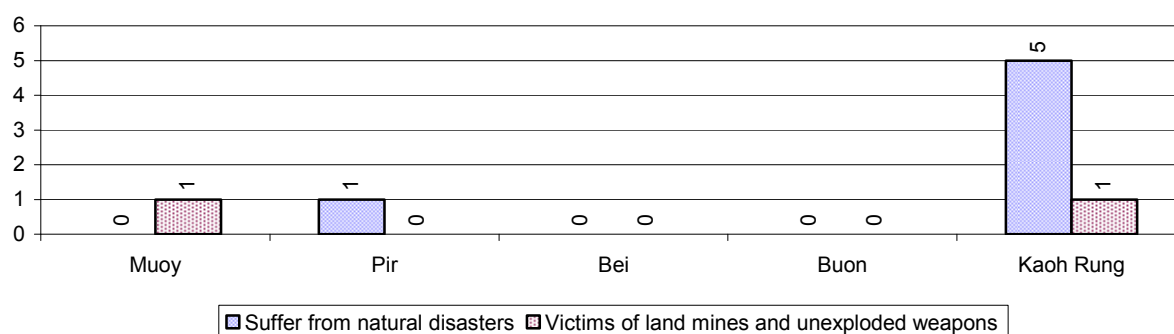
### 3.4.4 Elderly Persons without a Guardian and orphaned/abandoned Children under 18 years old, by Commune, for 2008



### 3.4.5 Number of disabled People who could or could not earn an Income, by Commune, for 2008



### 3.4.6 Number of Families who suffered from natural Disasters, and number of Victims of Land Mines and unexploded Weapons, by Commune, in 2008



## 3.5 Migration

### 3.5.1 Migration over 3 years

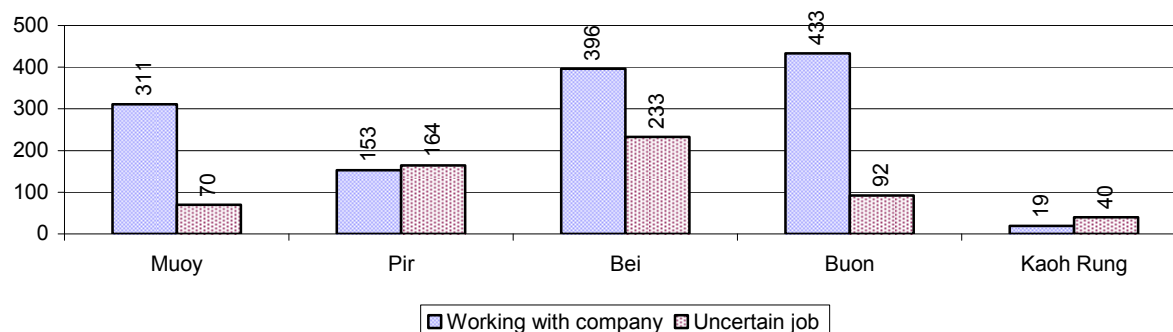
Description	2006	2007	2008
Number of families permanently in-migrated	98families	129 families	272 families
Total number of people	469 person(s)	593 person(s)	1,895 person(s)
Total number of female	277 person(s)	373 person(s)	747 person(s)
Number of families permanently out-migrated	623 families	337 families	179 families
Total number of people	3,385 person(s)	1,762 person(s)	583 person(s)
Total number of female	1,856 person(s)	543 person(s)	376 person(s)
Number of families staying temporarily	762 families	838 families	1,666 families
Total number of people	3,427 person(s)	3,476 person(s)	6,908 person(s)
Total number of female	1,633 person(s)	1,766 person(s)	3,471 person(s)

### 3.5.2 Job Migration

Description	2006	2007	2008	
Number of people migrated to work with company/factory	3%	4%	4%	1,312 persons
Number of people migrated to work, but have uncertain jobs	1%	2%	2%	599 persons

**Note:** Calculated as a percentage of the total population of 18-60 year olds

### 3.5.3 Number of People working outside their home Villages in a Company/Factory or with an uncertain Job in 2008



### 3.5.4 Female migration over 3 years

Description	2006 %	2007 %	2008	
			%	Number
Total number of migrants	2.3%	3.2%	3.1%	1,911 person(s)
Number of female migrants	1.6%	1.9%	1.9%	1,168 person(s)
Total number of migrants, who go to work with company/factory (with certain jobs)	1.7%	2.3%	2.1%	1,312 person(s)
Number of female migrants with certain jobs	1.3%	1.5%	1.4%	883 person(s)
Total number of migrants with uncertain jobs	0.6%	0.9%	1.0%	599 person(s)
Number of female migrants with uncertain jobs	0.3%	0.4%	0.5%	285 person(s)

**Note:** Calculated as a percentage of the total population

### 3.5.5 Percentage female Migrants with certain and uncertain Jobs, by Commune, in 2008



**Note:** Calculated as a percentage of the total population of the commune

## 4 Natural Resources and Environment (NRE)

### 4.1 Families involved with NRE issues over 3 years

Description	2006 %	2007 %	2008	
			%	Number
Families living with forest by products	1 %	1 %	0 %	60 families
Families living in a protected area	2 %	2 %	2 %	259 families
Houses with access to garbage collection service	40 %	47 %	41 %	5,345 families
Families affected by environmental pollution	6 %	10 %	5 %	654 families
Families using chemical fertilizer	1 %	1 %	1 %	155 families
Families using chemical pesticide	1 %	1 %	1 %	154 families

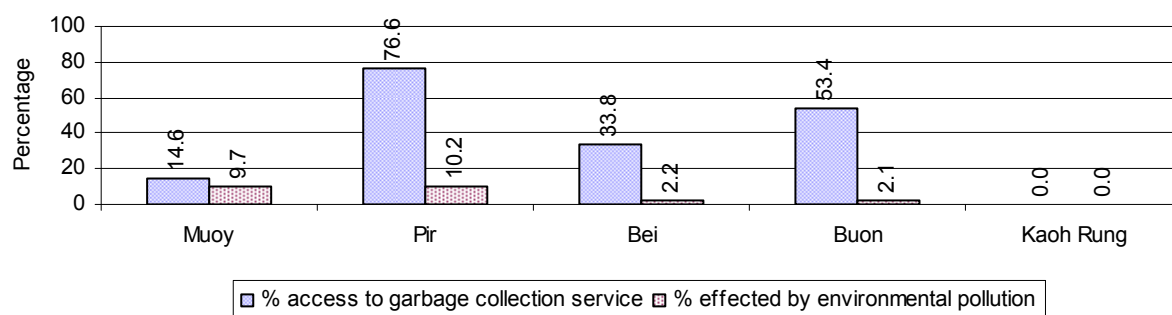
**Note:** Calculated as a percentage of the total number of families

### 4.2 Percentage of Families involved with Natural Resource issues, by Commune, for 2008



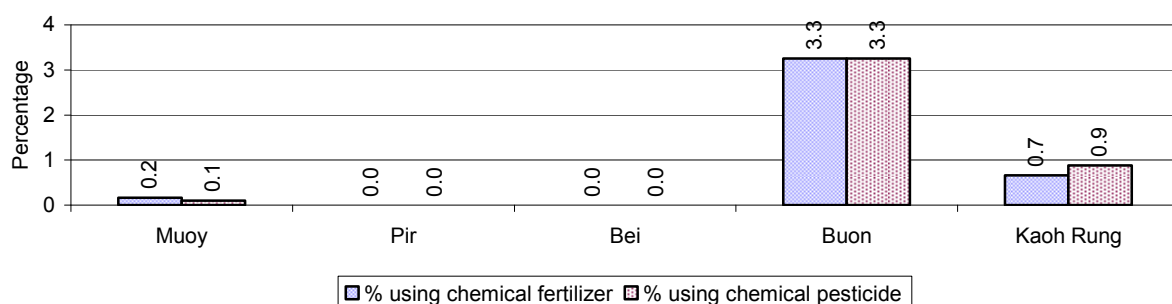
**Note:** Calculated as a percentage of the number of families in each commune

### 4.3 Percentage Houses with access to Garbage collection and Families affected by environmental Pollution, by Commune, for 2008



**Note:** Garbage collection is calculated as a percentage of the total number of houses in each commune and families affected by environmental pollution is calculated as a percentage of the total number of families in each commune.

### 4.4 Percentage Families using chemical Fertilizer and chemical Pesticides, by Commune, for 2008



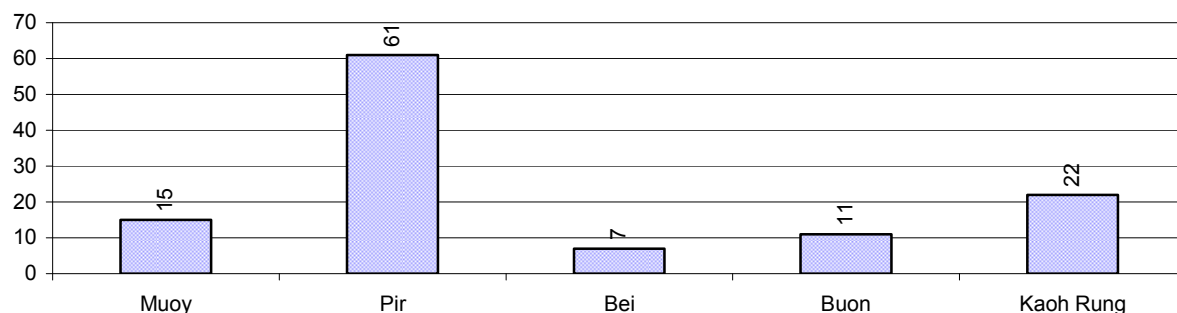
**Note:** Calculated as a percentage of the total number of families in each commune

## 5 Administration and Security

### 5.1 Birth Registration across 3 years

Description	2006	2007	2008
Number of infants to be registered	464 person(s)	491 person(s)	582 person(s)
Number of unregistered infants the year	69 person(s)	96 person(s)	116 person(s)
Percentage of infants unregistered	15 %	20 %	20 %

### 5.2 Number of unregistered Infants born in 2008, by Commune

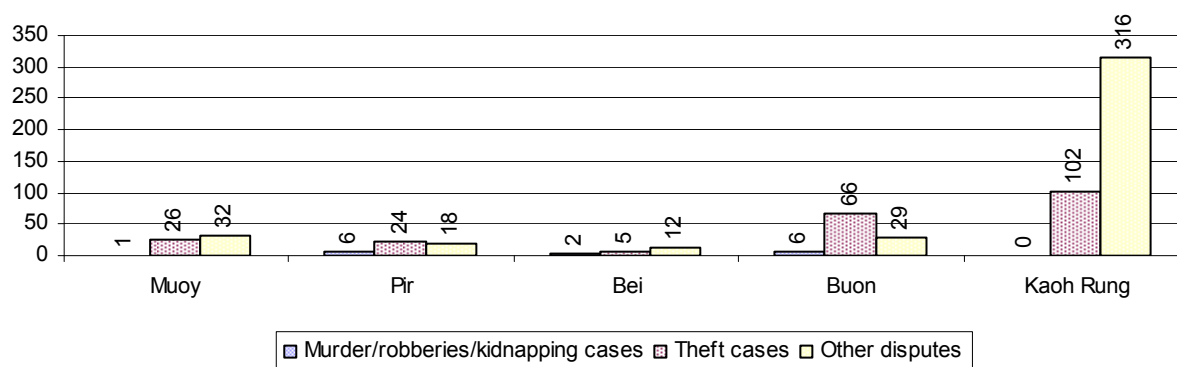


### 5.3 Registered criminal Cases over 3 years

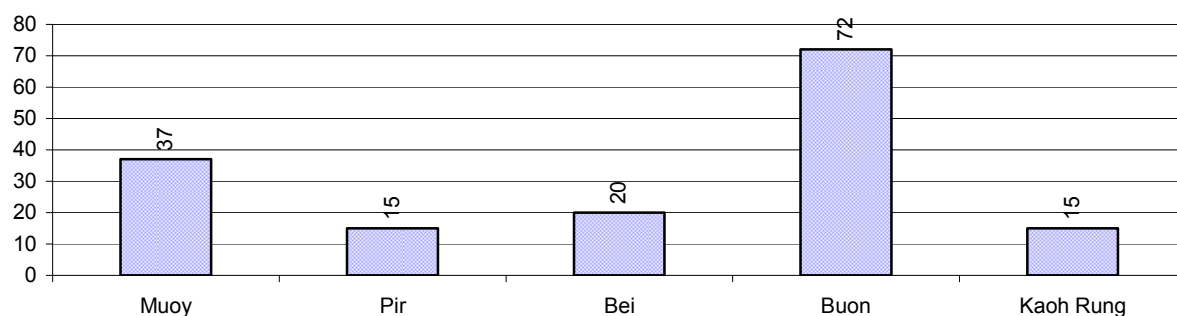
Description	2006	2007	2008
Murders, robberies and kidnapping cases	16 case(s)	18 case(s)	24 case(s)
Theft cases	218 case(s)	405 case(s)	232 case(s)
land dispute cases	109 case(s)	319 case(s)	159 case(s)
Other disputes cases	195 case(s)	240 case(s)	206 case(s)

*Note: this reflects only registered criminal cases*

### 5.4 Registered criminal Cases per 10,000 people, by Commune, for 2008



### 5.5 Number of registered Land Disputes, by Commune, in 2008

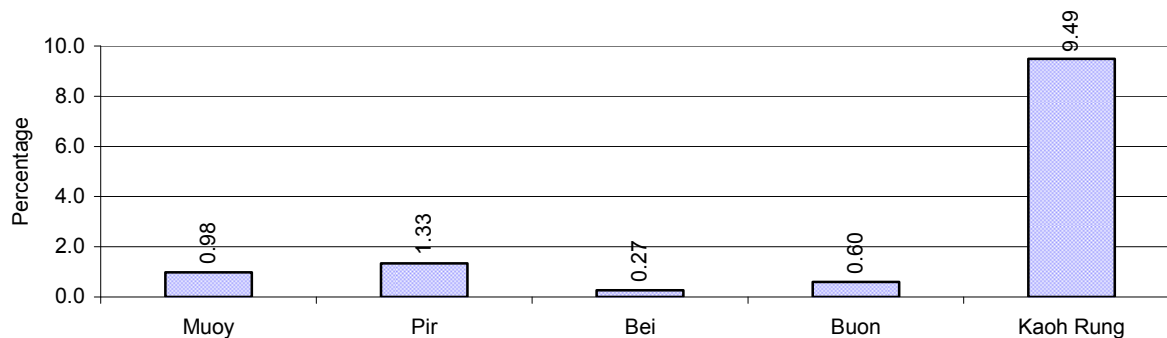


## 6 Gender

### 6.1 Registered Domestic Violence over 3 years

Description		2006	2007	2008
Families experiencing domestic violence		298 families	135 families	134 families(s)
% families experiencing domestic violence		2 %	1 %	1 %
Domestic violence cases reported by village chiefs		129 case(s)	159 case(s)	108 case(s)
Type	Physical violence	56 case(s)	52 case(s)	52 case(s)
	Sexual violence	12 case(s)	8 case(s)	5 case(s)
	Mental violence	31 case(s)	66 case(s)	37 case(s)
	Household economic violence	30 case(s)	33 case(s)	14 case(s)
Number of administrative decisions on domestic violence		0 case(s)	159 case(s)	82 case(s)
% of administrative decisions on domestic violence		0 %	100 %	76 %

### 6.2 Percentage of registered cases of Families experiencing domestic Violence, by Commune, in 2008



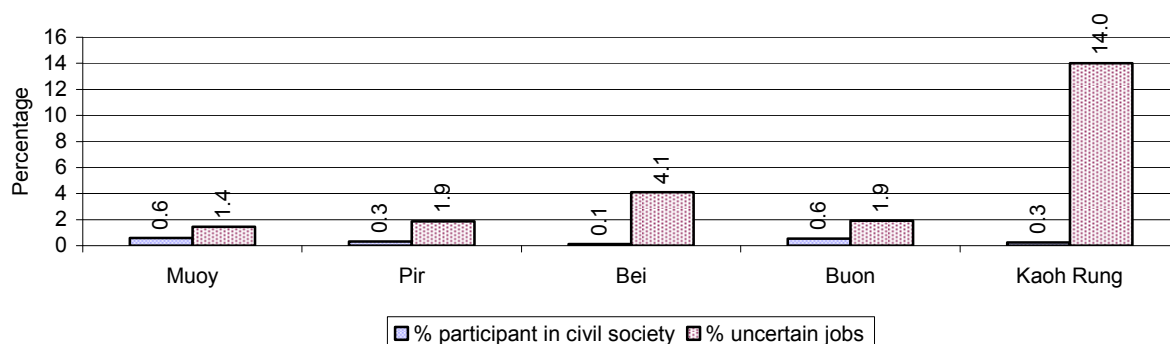
**Note:** Calculated as a percentage of the total number of families in each commune

### 6.3 Women's involvement over 3 years

Description	2006 %	2007 %	2008	
			%	Number
People participating in civil society	1%	1%	1%	542 person(s)
Women participating in civil society	0%	0%	0%	258 person(s)
People, 18-60 yrs, with uncertain/irregular jobs	5%	5%	5%	1,743 person(s)
Women, 18-60 yrs, with uncertain/irregular jobs	2%	3%	3%	941 person(s)

**Note:** Participation can be in NGOs, CBOs, credit groups, women's unions, parties and other civil society organizations. The first section is calculated as a percentage of the total population. The second section is calculated as a percentage of the total 18-60 year old population.

#### 6.4 Percentage of Female Participants in Civil Society and of 18-60 year women with uncertain Jobs, by Commune, in 2008



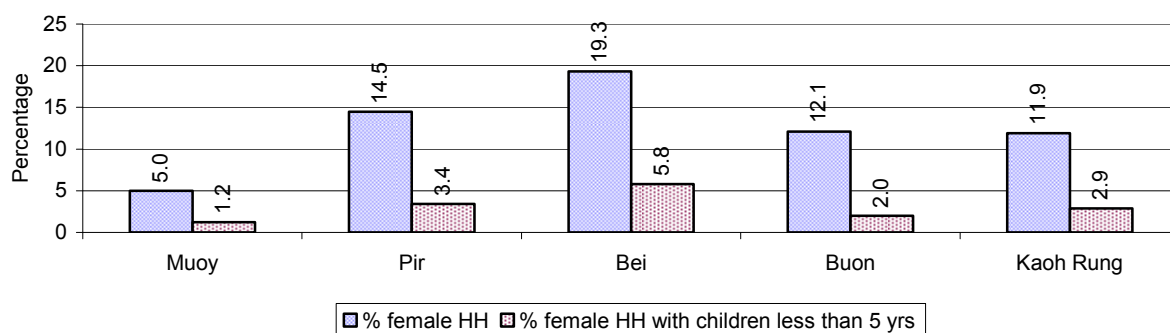
**Note:** Percentage of female participants in civil society is calculated as a percentage of the total population per commune. The percentage of 18-60 years old women with uncertain jobs is calculated as a percentage of the total 18-60 year old population per commune.

#### 6.5 Female-headed Households over 3 years

Families with:	2006	2007	2008	
	%	%	%	Number
Households in which a woman is the family head	14%	13%	12%	1,601 families
Households in which a woman is the family head with children of less than 5 yrs	3%	3%	3%	377 families

**Note:** Calculated as a percentage of the total number of families

#### 6.6 Percentage female-headed Households and with Children of less than 5 years old, by Commune, in 2008



**Note:** Calculated as a percentage of the total number of families in each commune  
HH: Headed Household

## 7 Indigenous People in the District

### 7.1 Ethnic Minorities in the District over 3 years

Race of indigenous	2006		2007		2008	
	# families	# population	# families	# population	# families	# population
Phnong	0 families	0 person(s)	0 families	0 person(s)	0 families	0 person(s)
Kouy	0 families	0 person(s)	0 families	0 person(s)	0 families	0 person(s)
Stieng	0 families	0 person(s)	0 families	0 person(s)	0 families	0 person(s)
Mil	0 families	0 person(s)	0 families	0 person(s)	0 families	0 person(s)
Kroal	0 families	0 person(s)	0 families	0 person(s)	0 families	0 person(s)
Thmorn	0 families	0 person(s)	0 families	0 person(s)	0 families	0 person(s)
Khaonh	0 families	0 person(s)	0 families	0 person(s)	0 families	0 person(s)
Tompouonn	0 families	0 person(s)	0 families	0 person(s)	0 families	0 person(s)
Charay	0 families	0 person(s)	0 families	0 person(s)	0 families	0 person(s)
Kroeung	0 families	0 person(s)	0 families	0 person(s)	0 families	0 person(s)
Kavet	0 families	0 person(s)	0 families	0 person(s)	0 families	0 person(s)
Saouch	0 families	0 person(s)	0 families	0 person(s)	0 families	0 person(s)
Lun	0 families	0 person(s)	0 families	0 person(s)	0 families	0 person(s)
Kachak	0 families	0 person(s)	0 families	0 person(s)	0 families	0 person(s)
Praov	0 families	0 person(s)	0 families	0 person(s)	0 families	0 person(s)
Others	0 families	0 person(s)	0 families	0 person(s)	0 families	0 person(s)
<b>Total</b>	0 families	0 person(s)	0 families	0 person(s)	0 families	0 person(s)

**Note:** "Others" refer to other ethnic groups which are not listed.

### 7.2 Other Minorities in the District over 3 years

Minority	2006		2007		2008	
	# families	# population	# families	# population	# families	# population
Khmer Islamic	41 families	204 person(s)	44 families	242 person(s)	48 families	282 person(s)
Vietnamese	199 families	917 person(s)	123 families	506 person(s)	94 families	430 person(s)
Laos	0 families	0 person(s)	0 families	0 person(s)	0 families	0 person(s)

**Note:** Number of indigenous and minority population are additional data, so some village may not recorded.



## **SECTION C: PLANS AND PROJECTS**



## 8 Priorities and Plans

### 8.1 Priorities of Commune Councils for 2009 in the District by Sector

The District Priority Activity Matrix (DPAM) data are taken from the CDPD. The DPAM is used for the District Integration Workshop (DIW), to show what kind of projects the commune has proposed in their Commune Investment Plan (CIP) for 2009. Donors, departments and other agencies then consider which projects they want to support and which projects they are not interested in. This results in Temporary Agreements between the Commune Council and the Supporter (NGO, Department, private donor, etc), as shown in table 8.2

No.	Project Name	Muoy	Pir	Bei	Buon	Kaoh Rung	Req.Project
		180101	180102	180103	180104	180105	Total
Economic							
1	Compost fertilizer training					4 hole	1
2	Vegetable growing training		2 training		2 training		2
3	Fruit tree cultivation training					2 training	1
4	Subsidiary cropping technique training					2 training	1
5	Animal vaccination request	2 time	2 time		4 time	2 time	4
6	Village veterinary training	1 training				1 training	2
7	Animal raising training	4 training	2 training	3 training	2 training		4
8	Pig raising training					2 training	1
9	Livestock feed producing training					2 training	1
10	Calf for raising request	50 Head		20 Head	40 Head		3
11	Sow for raising request	80 Head		40 Head	40 Head		3
12	Pesticide request	6 time					1
13	Vegetable seed and farming tools request				2 time	4 time	2
14	Family fish pond construction	4 Pond					1
15	Fish raising training					2 training	1
16	Road maintenance project			800 m	4000 m		2
17	Bridger construction	2 place		1 place			2
18	Asphalt road construction		1000 m	1950 m	1500 m		3
19	Mass concrete road construction	2200 m	1000 m	950 m	1000 m		4
20	Port construction					2 place	1
21	Laterite/natural gravel road repairing	6000 m					1
22	Bridger repairing		1 place		2 place		2
23	Asphalt road repairing		12000 m2				1
24	Cash credit	12 time				4 time	2
25	Development of natural tourism area		1 place			4 place	2

## District Data Book 2009: Development Plans and Projects

No.	Project Name	Muoy	Pir	Bei	Buon	Kaoh Rung	Req.Project
		180101	180102	180103	180104	180105	Total
26	Electricity supply	6000 m					1
Social							
1	Family planning	12 time	12 time			12 time	3
2	Reproductive health awareness education		12 time			12 time	2
3	Antenatal care service accessibility improvement					12 time	1
4	Sexual disease treatment needs	12 time					1
5	HIV/AIDS infected person assistance				12 time		1
6	Health/hygiene education for local people				6 time		1
7	Transmitted disease education and prevention	12 time			12 time	2 time	3
8	Food safety and hygiene education		4 time			4 time	2
9	Women and children health care education		6 time	6 time			2
10	Children immunization provision	6 time	4 time	4 time	4 time	4 time	5
11	Women immunization	12 time		12 time	12 time	6 time	4
12	Tuberculosis treatment accessibility	12 time					1
13	Malaria awareness education	4 time		12 time	6 time		3
14	Mosquito larvae removal treatment		3 time	4 time	4 time	4 time	4
15	Dengue fever education programme	6 time		6 time	6 time		3
16	Maternal health care service activation/creation					6 time	1
17	Ferric tablet and Vitamin A distribution campaign					4 time	1
18	Nutrition support					4 time	1
19	Latrine construction	97 toilet		80 toilet		30 toilet	3
20	Sanitation education	6 time					1
21	Water supply	8700 m		5000 m	4000 m		3
22	Pump wells construction	3 well		15 well	6 well		3
23	Ring wells construction	14 well		15 well	6 well		3
24	Literacy class participation encouragement	2 time					1
25	School fence construction				750 m		1
26	School building					1 building	1
27	Kindergarten school construction/repair	3 class					1
28	Motivating pupil's parents for school enrollment	2 time	2 time	2 time			3
29	School materials support to poor pupils	4 time		4 time	4 time		3
30	Vocational training	2 training	2 training	2 training		2 training	4
31	Engine/car repairing skill training			3 training			1
32	Black smith skill training			3 training			1
33	Vulnerable group aid/support		4 time				1

District Data Book 2009: Development Plans and Projects

No.	Project Name	Muoy	Pir	Bei	Buon	Kaoh Rung	Req.Project
		180101	180102	180103	180104	180105	Total
NREM							
1	Environmental awareness and law education	4 time	3 time	5 time		2 time	4
2	Fishery law education	2 time		2 time	2 time	2 time	4
3	Forestry law education	2 time					1
4	Environmental poster installation	5 board		3 board	5 board		3
5	Organizing environment day		3 time				1
6	Tree plantation project					5000 Tree	1
7	Flooded forest rehabilitation/planting					10000 Tree	1
8	Illegal fishing prevention	12 time		12 time			2
9	Strengthening fishery community	1 Fishing Community				3 Fishing Community	2
10	Fish habitat/fish species protection/conservation					60 piece	1
11	Fish raising community support					4 Team	1
12	Sea weed conservation strengthening					4 place	1
13	Community forestry activities support	3 Forestry Community					1
14	Forest protection strengthening	12 time				12 time	2
15	Drainage system rehabilitation	1400 m	1000 m	2400 m	2000 m		4
16	Sewage culvert system construction/rehabilitation	120 m					1
17	Solving rubbish problems				5 place		1
18	New sewage system construction		1000 m				1
19	Sewage canal construction/rehabilitation	550 m	1280 m	770 m			3
20	Household waste management education	4 time					1
21	Biogas cooking project		4 time			4 time	2
22	Family waste bin encouragement	20 Garbage bin	1200 Garbage bin		50 Garbage bin		3
23	Waste control measurement		6 time				1
Administration and Security							
1	Civil registration encouragement					12 time	1
2	CC capacity strengthening					2 training	1
3	Commune office construction/renovation	1 building		1 building	1 building	1 building	4
4	Village office construction/renovation	3 building		2 building			2
5	Minor construction work of commune office					300 m	1
6	Land law dissemination	4 time		2 time	4 time		3

District Data Book 2009: Development Plans and Projects

No.	Project Name	Muoy	Pir	Bei	Buon	Kaoh Rung	Req.Project
		180101	180102	180103	180104	180105	Total
7	Provision of land titles/certificates	1500 doc		2000 doc			2
8	Social land concession project	385 family					1
9	People guard activities formation/strengthening	4 Team		3 Team			2
10	Drug and related law education	12 time	12 time		12 time		3
11	Gambling control/elimination activation	12 time			12 time		2
12	Stealing elimination activation	12 time					1
13	Gangs gathering educated for local security	12 time			12 time		2
14	Drug business/use prevention	12 time	12 time	12 time			3
15	Local police capacity building/strengthening	2 time					1
16	Identification card issued					4 time	1
17	Human right and related law education	6 time	6 time			4 time	3
18	TV/Radio broadcasting of local news		12 time			4 time	2
<b>Gender</b>							
1	Gender mainstreaming concept training				4 training		1
2	Gender mainstreaming in CIP					4 time	1
3	Women role in development strengthening/dissemination				4 time		1
4	Gender concept/equity mainstreaming		4 time			4 time	2
5	Gender FP strengthening	4 time				2 time	2
6	Woman and children's rights dissemination	8 time	12 time	4 time	6 time	4 time	5
7	Women and men roles/rights dissemination		6 time			4 time	2
8	Women vocational training				2 training		1
9	Lady makeup/hair dressing skill training			2 training			1
10	Materials support to create women job					2 time	1
11	Law against domestic violence dissemination	6 time	4 time	4 time	4 time	4 time	5
12	Law against trafficking dissemination			4 time	6 time		2
13	Prostitutes business reduction education	4 time					1
14	Children's labor exploitation elimination	12 time	12 time	12 time	6 time	8 time	5
15	Swindle trick of broker prevention education		6 time				1

**Source:** CDPD – District Priority Matrix

## 8.2 Temporary Agreements by Commune, for 2009<sup>2</sup>

At the District Integration Workshop (DIW) the Supporters (donors, agencies, private donors, NGOs, etc.) identify which projects/activities they would like to support or they put forward their own projects to be implemented in a particular commune. Once there is agreement between Commune Councils and Supporters on specific projects a **Temporary Agreement** is signed by the commune and the Supporter to show their mutual commitment to the identified projects/activities.

It is important to keep in mind that such Temporary Agreements do not necessarily result in implementation.

### 8.2.1 Temporary Agreements for 2009 as per DIW 2008 for Commune: Muoy

Commune GIS	Commune	Temporary Agreements				Supporter	Funding Source	Listed in CIP before DIW
		Project Name	Quantity	Unit	Est.Cost (K.Riels)			
Economic								
180101	Muoy	Livestock vaccination provision	2	time	800	Department of Agriculture Forestry and Fisheries	PIF	✓
180101	Muoy	Electricity supply	3000	m	30000			✓
180101	Muoy	Village veterinary training	1	Course/year	800	Department of Agriculture Forestry and Fisheries	PIF	✓
Social								
180101	Muoy	Women immunization	4	time	4000	Department of Health		✓
180101	Muoy	Ferric tablet and Vitamin A distribution campaign	2	time	1000	Reproductive Health Association of Cambodia		☐
180101	Muoy	Mosquito larvae removal treatment	2	time	1000	Department of Health		☐
180101	Muoy	Reproductive health awareness education	6	time	800	Reproductive Health Association of Cambodia		☐
180101	Muoy	Antenatal vaccination provision	12	time	1000	Department of Health		☐
180101	Muoy	Food safety and hygiene education	4	time	1600	Department of Health		☐
180101	Muoy	Antenatal care service accessibility improvement	12	time	2000	Reproductive Health Association of Cambodia		☐
180101	Muoy	Antenatal care service accessibility improvement	12	time	3000	Department of Health		☐
180101	Muoy	Nutrition support	4	time	2000	Department of Health		☐
180101	Muoy	tr	1	Course/year	4000			☐
180101	Muoy	Health clinic service	24	time	3000	Department of Health		☐

<sup>2</sup> Not all the data from the CDPD has been translated to English, this has resulted in some cells in the TA tables being blank.

District Data Book 2009: Development Plans and Projects

Commune GIS	Commune	Temporary Agreements				Supporter	Funding Source	Listed in CIP before DIW
		Project Name	Quantity	Unit	Est.Cost (K.Riels)			
180101	Muoy	Vocational training	1	Course/year	1000	Department of Labor and Vocational Training	PIF	✓
180101	Muoy	Sexual disease treatment needs	12	time	1000	Reproductive Health Association of Cambodia		✓
180101	Muoy	Transmitted disease education and prevention	12	time	3200	Department of Health		✓
180101	Muoy	School materials support to poor pupils	2	time	4000			✓
180101	Muoy	Reproductive health awareness education	2	time	400	Department of Health		□
180101	Muoy	Dengue fever education programme	4	time	2000	Department of Health		✓
180101	Muoy	lk	12	time	2800	Department of Health		□
180101	Muoy	Health/hygiene education for local people	12	time	2800	Department of Health		□
180101	Muoy		50	person	7500	Reproductive Health Association of Cambodia		□
180101	Muoy	HIV/AIDS awareness education	2	time	400	Reproductive Health Association of Cambodia		□
180101	Muoy	Children immunization provision	4	time	2400	Department of Health		✓
180101	Muoy	HIV/AIDS infected person assistance	12	time	2000	Department of Health		□
180101	Muoy	HIV/AIDS awareness education	12	Course/year	1800	Department of Health		□
180101	Muoy	kl	12	time	1200	Department of Health		□
180101	Muoy	Family planning	12	time	3000	Reproductive Health Association of Cambodia		✓
180101	Muoy	Children immunization provision	4	time	2400	Reproductive Health Association of Cambodia		✓
180101	Muoy	Family planning	12	time	4000	Department of Health		✓
180101	Muoy	Women and children health care education	6	time	2000	Department of Health		□
180101	Muoy	TB/leprosy patients searching	12	time	2400	Department of Health		□
Administration and Security								
180101	Muoy	Drug and related law education	1	time	240	Department of Social and Veteran Affairs and Youth Rehabilitation		✓
180101	Muoy	Anti-theft in local area reinforcement	12	time	2400	Police military		✓
180101	Muoy	Drug and related law education	3	time	500			✓
180101	Muoy	Drug business/use prevention	12	time	2400	Police military		✓



District Data Book 2009: Development Plans and Projects

Commune GIS	Commune	Temporary Agreements				Supporter	Funding Source	Listed in CIP before DIW
		Project Name	Quantity	Unit	Est.Cost (K.Riels)			
180101	Muoy	Drug business/use prevention	12	time	2400	Police Commissioner's Office		✓
180101	Muoy	Anti-theft in local area reinforcement	12	time	2400	Police Commissioner's Office		✓
180101	Muoy	Human right and related law education	2	time	1200	Cambodian League for the Promotion and Defense of H.R		✓
180101	Muoy	Provision of land titles/certificates	1500	doc	18000	Department of Land Management, Urban Planning & Construction	PIF	✓
180101	Muoy	TV/Radio broadcasting of local news	1	time	240	Department of Information	PIF	□
180101	Muoy	Identification card issued	2	time	3000	Police Commissioner's Office		□
180101	Muoy	Gambling conquest reinforcement	12	time	2400	Police military		✓
180101	Muoy	Gambling conquest reinforcement	12	time	2400	Police Commissioner's Office		✓
180101	Muoy	Gangs gathering educated for local security	12	time	2400	Police Commissioner's Office		✓
180101	Muoy	People guard activities formation/strengthening	3	Team	1200	Police Commissioner's Office		✓
Gender								
180101	Muoy	Law against domestic violence dissemination	1	time	240	Department of Women	PIF	✓
180101	Muoy	Anti-domestic violence law dissemination	2	time	400	Cambodian League for the Promotion and Defense of H.R		✓
180101	Muoy	Woman and children's rights dissemination	1	time	240	Department of Women	PIF	✓
180101	Muoy	Children's labor exploitation elimination	1	time	1000	Department of Labor and Vocational Training		✓
180101	Muoy	Children's labor exploitation elimination	2	time	2000	BAICE		✓
180101	Muoy	Gender FP strengthening	1	time	260	Department of Women	PIF	✓
180101	Muoy	Law against trafficking dissemination	1	time	400	Department of Labor and Vocational Training		□

District Data Book 2009: Development Plans and Projects

Commune GIS	Commune	Temporary Agreements				Supporter	Funding Source	Listed in CIP before DIW
		Project Name	Quantity	Unit	Est.Cost (K.Riels)			
180101	Muoy	Swindle trick of broker prevention education	1	time	240	Department of Social and Veteran Affairs and Youth Rehabilitation	PIF	<input type="checkbox"/>
180101	Muoy	Anti-trafficking of women and children law dissemination	1	time	240	Department of Women	PIF	<input type="checkbox"/>
180101	Muoy	Gender mainstreaming concept training	1	Course/year	240	Department of Women	PIF	<input type="checkbox"/>
180101	Muoy	Women role in development strengthening/dissemination	1	time	240	Department of Women	PIF	<input type="checkbox"/>
180101	Muoy	Children's rights dissemination	2	time	1000	BAICE		<input type="checkbox"/>
180101	Muoy	Materials support to create women job	2	time	4000			<input type="checkbox"/>
180101	Muoy	Lady makeup/hair dressing skill training	1	Course/year	600	Department of Labor and Vocational Training	PIF	<input type="checkbox"/>

### 8.2.2 Temporary Agreements for 2009 as per DIW 2008 for Commune: Pir

Commune GIS	Commune	Temporary Agreements				Supporter	Funding Source	Listed in CIP before DIW
		Project Name	Quantity	Unit	Est.Cost (K.Riels)			
Economic								
180102	Pir	Livestock vaccination provision	2	time	800	Department of Agriculture Forestry and Fisheries	PIF	✓
180102	Pir		400	m	180000	Department of Public Work and Transport		✓
Social								
180102	Pir	Reproductive health awareness education	6	time	800	Reproductive Health Association of Cambodia		✓
180102	Pir	Nutrition support	4	time	2000	Department of Health		☐
180102	Pir	Ferric tablet and Vitamin A distribution campaign	2	time	1000	Reproductive Health Association of Cambodia		☐
180102	Pir	Dengue fever education programme	4	time	2000	Department of Health		☐
180102	Pir	Health clinic service	24	time	3000	Department of Health		☐
180102	Pir	Antenatal vaccination provision	12	time	1000	Department of Health		☐
180102	Pir	tr	1	Course/year	4000			☐

## District Data Book 2009: Development Plans and Projects

Commune GIS	Commune	Temporary Agreements				Supporter	Funding Source	Listed in CIP before DIW
		Project Name	Quantity	Unit	Est.Cost (K.Riels)			
180102	Pir	Transmitted disease education and prevention	12	time	3200	Department of Health		<input type="checkbox"/>
180102	Pir	TB/leprosy patients searching	12	time	2400	Department of Health		<input type="checkbox"/>
180102	Pir	Vocational training	1	Course/year	1000	Department of Labor and Vocational Training	PIF	✓
180102	Pir	Women immunization	4	time	4000	Department of Health		<input type="checkbox"/>
180102	Pir	Reproductive health awareness education	2	time	400	Department of Health		✓
180102	Pir	Family planning	12	time	3000	Reproductive Health Association of Cambodia		✓
180102	Pir	Family planning	12	time	4000	Department of Health		✓
180102	Pir	Mosquito larvae removal treatment	2	time	1000	Department of Health		✓
180102	Pir	Food safety and hygiene education	4	time	1600	Department of Health		✓
180102	Pir	Women and children health care education	6	time	2000	Department of Health		✓
180102	Pir	Children immunization provision	4	time	2400	Reproductive Health Association of Cambodia		✓
180102	Pir	Children immunization provision	4	time	2400	Department of Health		✓
180102	Pir	Antenatal care service accessibility improvement	12	time	3000	Department of Health		<input type="checkbox"/>
180102	Pir	School materials support to poor pupils	2	time	4000			<input type="checkbox"/>
180102	Pir	Health/hygiene education for local people	12	time	2800	Department of Health		<input type="checkbox"/>
180102	Pir		40	person	6000	Reproductive Health Association of Cambodia		<input type="checkbox"/>
180102	Pir	HIV/AIDS awareness education	2	time	400	Reproductive Health Association of Cambodia		<input type="checkbox"/>
180102	Pir	HIV/AIDS infected person assistance	12	time	2000	Department of Health		<input type="checkbox"/>
180102	Pir	Sexual disease treatment needs	12	time	1000	Reproductive Health Association of Cambodia		<input type="checkbox"/>
180102	Pir	HIV/AIDS awareness education	12	Course/year	1800	Department of Health		<input type="checkbox"/>
180102	Pir	kl	12	time	1200	Department of Health		<input type="checkbox"/>
180102	Pir	Motivating pupil's parents for school enrollment	1	time	400			<input type="checkbox"/>
180102	Pir	lk	12	time	2800	Department of Health		<input type="checkbox"/>
180102	Pir	Antenatal care service accessibility	12	time	2000	Reproductive Health		<input type="checkbox"/>

District Data Book 2009: Development Plans and Projects

Commune GIS	Commune	Temporary Agreements				Supporter	Funding Source	Listed in CIP before DIW
		Project Name	Quantity	Unit	Est.Cost (K.Riels)			
		improvement				Association of Cambodia		
<b>NREM</b>								
180102	Pir	Family waste bin encouragement	10	Garbage bin	800	Department of Environment	PIF	✓
180102	Pir	Organizing environment day	1	time	800	Department of Environment	PIF	✓
<b>Administration and Security</b>								
180102	Pir	Drug business/use prevention	12	time	2400	Police military		✓
180102	Pir	Drug business/use prevention	12	time	2400	Police Commissioner's Office		✓
180102	Pir	Human right and related law education	2	time	1200	Cambodian League for the Promotion and Defense of H.R		✓
180102	Pir	Anti-theft in local area reinforcement	12	time	2400	Police Commissioner's Office		□
180102	Pir	Identification card issued	2	time	3000	Police Commissioner's Office		□
180102	Pir	TV/Radio broadcasting of local news	1	time	240	Department of Information	PIF	✓
180102	Pir	Gangs gathering educated for local security	12	time	2400	Police Commissioner's Office		□
180102	Pir	Anti-theft in local area reinforcement	12	time	2400	Police military		□
180102	Pir	Gambling conquest reinforcement	12	time	2400	Police Commissioner's Office		□
180102	Pir	Gambling conquest reinforcement	12	time	2400	Police military		□
180102	Pir	Drug and related law education	1	time	240	Department of Social and Veteran Affairs and Youth Rehabilitation		✓
180102	Pir	Drug and related law education	3	time	500			✓
<b>Gender</b>								
180102	Pir	Materials support to create women job	2	time	4000			□
180102	Pir	Children's rights dissemination	2	time	1000	BAICE		□
180102	Pir	Woman and children's rights dissemination	2	time	1000	BAICE		□
180102	Pir	Women role in development strengthening/dissemination	1	time	240	Department of Women	PIF	□

Commune GIS	Commune	Temporary Agreements				Supporter	Funding Source	Listed in CIP before DIW
		Project Name	Quantity	Unit	Est.Cost (K.Riels)			
180102	Pir	Anti-trafficking of women and children law dissemination	1	time	240	Department of Women	PIF	<input type="checkbox"/>
180102	Pir	Law against trafficking dissemination	1	time	400	Department of Labor and Vocational Training		<input type="checkbox"/>
180102	Pir	Lady makeup/hair dressing skill training	1	Course/year	600	Department of Labor and Vocational Training	PIF	<input type="checkbox"/>
180102	Pir	Woman and children's rights dissemination	1	time	240	Department of Women	PIF	✓
180102	Pir	Children's labor exploitation elimination	1	time	1000	Department of Labor and Vocational Training		✓
180102	Pir	Swindle trick of broker prevention education	1	time	240	Department of Social and Veteran Affairs and Youth Rehabilitation	PIF	✓
180102	Pir	Anti-domestic violence law dissemination	2	time	400	Cambodian League for the Promotion and Defense of H.R		✓
180102	Pir	Law against domestic violence dissemination	1	time	240	Department of Women	PIF	✓
180102	Pir	Gender mainstreaming concept training	1	Course/year	240	Department of Women	PIF	<input type="checkbox"/>

### 8.2.3 Temporary Agreements for 2009 as per DIW 2008 for Commune: Bei

Commune GIS	Commune	Temporary Agreements				Supporter	Funding Source	Listed in CIP befor DIW
		Project Name	Quantity	Unit	Est.Cost (K.Riels)			
Economic								
180103	Bei	Livestock vaccination provision	2	time	800	Department of Agriculture Forestry and Fisheries	PIF	<input type="checkbox"/>
180103	Bei		600	m	200000	Department of Public Work and Transport		✓
180103	Bei	Electricity supply	2500	m	25000			<input type="checkbox"/>
180103	Bei		1	place	100000	Department of Public Work and Transport		✓
Social								

District Data Book 2009: Development Plans and Projects

Commune GIS	Commune	Temporary Agreements				Supporter	Funding Source	Listed in CIP befor DIW
		Project Name	Quantity	Unit	Est.Cost (K.Riels)			
180103	Bei	Ferric tablet and Vitamin A distribution campaign	2	time	1000	Reproductive Health Association of Cambodia		<input type="checkbox"/>
180103	Bei	Health clinic service	24	time	3000	Department of Health		<input type="checkbox"/>
180103	Bei	Antenatal vaccination provision	12	time	1000	Department of Health		<input type="checkbox"/>
180103	Bei	School materials support to poor pupils	2	time	6000			<input type="checkbox"/>
180103	Bei	Transmitted disease education and prevention	12	time	3200	Department of Health		<input type="checkbox"/>
180103	Bei	Antenatal care service accessibility improvement	12	time	3000	Department of Health		<input type="checkbox"/>
180103	Bei	Reproductive health awareness education	2	time	400	Department of Health		<input type="checkbox"/>
180103	Bei	Family planning	12	time	4000	Department of Health		<input type="checkbox"/>
180103	Bei	Family planning	12	time	3000	Reproductive Health Association of Cambodia		<input type="checkbox"/>
180103	Bei	Children immunization provision	4	time	2400	Department of Health		✓
180103	Bei	Women immunization	4	time	4000	Department of Health		✓
180103	Bei	Food safety and hygiene education	4	time	1600	Department of Health		<input type="checkbox"/>
180103	Bei	Motivating pupil's parents for school enrollment	1	time	400			✓
180103	Bei	Vocational training	1	Course/year	1000	Department of Labor and Vocational Training	PIF	✓
180103	Bei	Dengue fever education programme	4	time	2000	Department of Health		✓
180103	Bei	Women and children health care education	6	time	2000	Department of Health		✓
180103	Bei	Mosquito larvae removal treatment	2	time	1000	Department of Health		✓
180103	Bei	Children immunization provision	4	time	2400	Reproductive Health Association of Cambodia		✓
180103	Bei	Reproductive health awareness education	6	time	800	Reproductive Health Association of Cambodia		<input type="checkbox"/>
180103	Bei	Sexual disease treatment needs	12	time	1000	Reproductive Health Association of Cambodia		<input type="checkbox"/>
180103	Bei	Antenatal care service accessibility improvement	12	time	2000	Reproductive Health Association of Cambodia		<input type="checkbox"/>
180103	Bei	Nutrition support	4	time	2000	Department of Health		<input type="checkbox"/>

District Data Book 2009: Development Plans and Projects

Commune GIS	Commune	Temporary Agreements				Supporter	Funding Source	Listed in CIP befor DIW
		Project Name	Quantity	Unit	Est.Cost (K.Riels)			
180103	Bei	HIV/AIDS awareness education	12	Course/year	1800	Department of Health		<input type="checkbox"/>
180103	Bei	HIV/AIDS infected person assistance	12	time	2000	Department of Health		<input type="checkbox"/>
180103	Bei	HIV/AIDS awareness education	2	time	400	Reproductive Health Association of Cambodia		<input type="checkbox"/>
180103	Bei		50	person	7500	Reproductive Health Association of Cambodia		<input type="checkbox"/>
180103	Bei	Health/hygiene education for local people	12	time	2800	Department of Health		<input type="checkbox"/>
180103	Bei	lk	12	time	2800	Department of Health		<input type="checkbox"/>
180103	Bei	TB/leprosy patients searching	12	time	2400	Department of Health		<input type="checkbox"/>
180103	Bei	kl	12	time	1200	Department of Health		<input type="checkbox"/>
Administration and Security								
180103	Bei	Drug and related law education	3	time	500			<input type="checkbox"/>
180103	Bei	People guard activities formation/strengthening	3	Team	1200	Police Commissioner's Office		✓
180103	Bei	Provision of land titles/certificates	2000	doc	240000	Department of Land Management, Urban Planning & Construction	PIF	✓
180103	Bei	Drug business/use prevention	12	time	2400	Police Commissioner's Office		✓
180103	Bei	Anti-theft in local area reinforcement	12	time	2400	Police Commissioner's Office		<input type="checkbox"/>
180103	Bei	TV/Radio broadcasting of local news	1	time	240	Department of Information	PIF	<input type="checkbox"/>
180103	Bei	Gangs gathering educated for local security	12	time	2400	Police Commissioner's Office		<input type="checkbox"/>
180103	Bei	Identification card issued	2	time	3000	Police Commissioner's Office		<input type="checkbox"/>
180103	Bei	Drug business/use prevention	12	time	2400	Police military		✓
180103	Bei	Gambling conquest reinforcement	12	time	2400	Police Commissioner's Office		<input type="checkbox"/>
180103	Bei	Anti-theft in local area reinforcement	12	time	2400	Police military		<input type="checkbox"/>
180103	Bei	Gambling conquest reinforcement	12	time	2400	Police military		<input type="checkbox"/>
Gender								
180103	Bei	Women role in development strengthening/dissemination	1	time	240	Department of Women	PIF	<input type="checkbox"/>
180103	Bei	Woman and children's rights dissemination	1	time	240	Department of Women	PIF	<input type="checkbox"/>
180103	Bei	Materials support to create women job	2	time	4000			<input type="checkbox"/>

Commune GIS	Commune	Temporary Agreements				Supporter	Funding Source	Listed in CIP before DIW
		Project Name	Quantity	Unit	Est.Cost (K.Riels)			
180103	Bei	Anti-domestic violence law dissemination	2	time	400	Cambodian League for the Promotion and Defense of H.R		✓
180103	Bei	Children's rights dissemination	2	time	1000	BAICE		□
180103	Bei	Gender mainstreaming concept training	1	Course/year	240	Department of Women	PIF	□
180103	Bei	Anti-trafficking of women and children law dissemination	1	time	240	Department of Women	PIF	✓
180103	Bei	Law against domestic violence dissemination	1	time	240	Department of Women	PIF	✓
180103	Bei	Lady makeup/hair dressing skill training	1	Course/year	600	Department of Labor and Vocational Training	PIF	✓
180103	Bei	Children's labor exploitation elimination	1	time	1000	Department of Labor and Vocational Training		✓
180103	Bei	Law against trafficking dissemination	1	time	400	Department of Labor and Vocational Training		✓

#### 8.2.4 Temporary Agreements for 2009 as per DIW 2008 for Commune: Buon

Commune GIS	Commune	Temporary Agreements				Supporter	Funding Source	Listed in CIP before DIW
		Project Name	Quantity	Unit	Est.Cost (K.Riels)			
Economic								
180104	Buon	Livestock vaccination provision	2	time	800	Department of Agriculture Forestry and Fisheries	PIF	✓
180104	Buon	Vegetable seed and farming tools request	10	Kg	100	Department of Agriculture Forestry and Fisheries	PIF	✓
180104	Buon	Electricity supply	7000	m	70000			□
Social								
180104	Buon	Dengue fever education programme	4	time	2000	Department of Health		✓
180104	Buon	Food safety and hygiene education	4	time	1600	Department of Health		□
180104	Buon	Antenatal care service accessibility improvement	12	time	2000	Reproductive Health Association of Cambodia		□
180104	Buon	Antenatal care service accessibility	12	time	3000	Department of Health		□



District Data Book 2009: Development Plans and Projects

Commune GIS	Commune	Temporary Agreements				Supporter	Funding Source	Listed in CIP before DIW
		Project Name	Quantity	Unit	Est.Cost (K.Riels)			
		improvement						
180104	Buon	Reproductive health awareness education	3	time	600	Department of Health		<input type="checkbox"/>
180104	Buon	tr	1	Course/year	4000			<input type="checkbox"/>
180104	Buon	Family planning	12	time	3000	Reproductive Health Association of Cambodia		<input type="checkbox"/>
180104	Buon	Women and children health care education	6	time	2000	Department of Health		<input type="checkbox"/>
180104	Buon	Women immunization	4	time	4000	Department of Health		<input checked="" type="checkbox"/>
180104	Buon	Reproductive health awareness education	6	time	800	Reproductive Health Association of Cambodia		<input type="checkbox"/>
180104	Buon	Mosquito larvae removal treatment	2	time	1000	Department of Health		<input checked="" type="checkbox"/>
180104	Buon	Transmitted disease education and prevention	12	time	3200	Department of Health		<input checked="" type="checkbox"/>
180104	Buon	HIV/AIDS infected person assistance	12	time	2000	Department of Health		<input checked="" type="checkbox"/>
180104	Buon	Health/hygiene education for local people	12	time	2800	Department of Health		<input checked="" type="checkbox"/>
180104	Buon	School materials support to poor pupils	2	time	4000			<input checked="" type="checkbox"/>
180104	Buon	Children immunization provision	4	time	2400	Reproductive Health Association of Cambodia		<input checked="" type="checkbox"/>
180104	Buon	Children immunization provision	4	time	2400	Department of Health		<input checked="" type="checkbox"/>
180104	Buon	Vocational training	1	Course/year	1000	Department of Labor and Vocational Training	PIF	<input type="checkbox"/>
180104	Buon	HIV/AIDS awareness education	2	time	400	Reproductive Health Association of Cambodia		<input type="checkbox"/>
180104	Buon	Family planning	12	time	6000	Department of Health		<input type="checkbox"/>
180104	Buon	kl	12	time	1200	Department of Health		<input type="checkbox"/>
180104	Buon	Antenatal vaccination provision	12	time	1000	Department of Health		<input type="checkbox"/>
180104	Buon	Sexual disease treatment needs	12	time	1000	Reproductive Health Association of Cambodia		<input type="checkbox"/>
180104	Buon	Motivating pupil's parents for school enrollment	1	time	400			<input type="checkbox"/>
180104	Buon		50	person	7500	Reproductive Health Association of Cambodia		<input type="checkbox"/>
180104	Buon	lk	12	time	2800	Department of Health		<input type="checkbox"/>
180104	Buon	TB/leprosy patients searching	12	time	2400	Department of Health		<input type="checkbox"/>

District Data Book 2009: Development Plans and Projects

Commune GIS	Commune	Temporary Agreements				Supporter	Funding Source	Listed in CIP before DIW
		Project Name	Quantity	Unit	Est.Cost (K.Riels)			
180104	Buon	Nutrition support	4	time	2000	Department of Health		<input type="checkbox"/>
180104	Buon	Ferric tablet and Vitamin A distribution campaign	2	time	1000	Reproductive Health Association of Cambodia		<input type="checkbox"/>
180104	Buon	Health clinic service	24	time	3000	Department of Health		<input type="checkbox"/>
180104	Buon	HIV/AIDS awareness education	12	Course/year	1800	Department of Health		<input type="checkbox"/>
Administration and Security								
180104	Buon	Drug and related law education	3	time	500			✓
180104	Buon	Gambling conquest reinforcement	12	time	2400	Police Commissioner's Office		✓
180104	Buon	Gambling conquest reinforcement	12	time	2400	Police military		✓
180104	Buon	Drug business/use prevention	12	time	2400	Police military		<input type="checkbox"/>
180104	Buon	Identification card issued	2	time	3000	Police Commissioner's Office		<input type="checkbox"/>
180104	Buon	Drug business/use prevention	12	time	2400	Police Commissioner's Office		<input type="checkbox"/>
180104	Buon	Gangs gathering educated for local security	12	time	2400	Police Commissioner's Office		✓
180104	Buon	Drug and related law education	1	time	240	Department of Social and Veteran Affairs and Youth Rehabilitation		✓
180104	Buon	Anti-theft in local area reinforcement	12	time	2400	Police Commissioner's Office		<input type="checkbox"/>
180104	Buon	TV/Radio broadcasting of local news	1	time	240	Department of Information	PIF	<input type="checkbox"/>
180104	Buon	Anti-theft in local area reinforcement	12	time	2400	Police military		<input type="checkbox"/>
Gender								
180104	Buon	Children's rights dissemination	2	time	1000	BAICE		<input type="checkbox"/>
180104	Buon	Anti-trafficking of women and children law dissemination	1	time	240	Department of Women	PIF	✓
180104	Buon	Materials support to create women job	2	time	4000			<input type="checkbox"/>
180104	Buon	Swindle trick of broker prevention education	1	time	240	Department of Social and Veteran Affairs and Youth Rehabilitation	PIF	<input type="checkbox"/>
180104	Buon	Anti-domestic violence law dissemination	2	time	400	Cambodian League for the		✓

Commune GIS	Commune	Temporary Agreements				Supporter	Funding Source	Listed in CIP before DIW
		Project Name	Quantity	Unit	Est.Cost (K.Riels)			
						Promotion and Defense of H.R		
180104	Buon	Law against trafficking dissemination	1	time	400	Department of Labor and Vocational Training		✓
180104	Buon	Children's labor exploitation elimination	1	time	1000	Department of Labor and Vocational Training		✓
180104	Buon	Woman and children's rights dissemination	1	time	240	Department of Women	PIF	✓
180104	Buon	Women role in development strengthening/dissemination	1	time	240	Department of Women	PIF	✓
180104	Buon	Women vocational training	1	Course/year	1000	Department of Labor and Vocational Training	PIF	✓
180104	Buon	Gender mainstreaming concept training	1	Course/year	240	Department of Women	PIF	✓
180104	Buon	Law against domestic violence dissemination	1	time	240	Department of Women	PIF	✓

### 8.2.5 Temporary Agreements for 2009 as per DIW 2008 for Commune: Kaoh Rung

Commune GIS	Commune	Temporary Agreements				Supporter	Funding Source	Listed in CIP before DIW
		Project Name	Quantity	Unit	Est.Cost (K.Riels)			
Economic								
180105	Kaoh Rung	Livestock vaccination provision	2	time	800	Department of Agriculture Forestry and Fisheries	PIF	✓
Social								
180105	Kaoh Rung	Women and children health care education	4	time	1300	Department of Health		☐
180105	Kaoh Rung	Malaria awareness education	12	time	2400	Department of Health		☐
180105	Kaoh Rung	Children immunization provision	4	time	2400	Department of Health		✓
180105	Kaoh Rung	Health clinic service	24	time	3000	Department of Health		☐

District Data Book 2009: Development Plans and Projects

Commune GIS	Commune	Temporary Agreements				Supporter	Funding Source	Listed in CIP before DIW
		Project Name	Quantity	Unit	Est.Cost (K.Riels)			
180105	Kaoh Rung	Antenatal vaccination provision	12	time	1000	Department of Health		<input type="checkbox"/>
180105	Kaoh Rung	School materials support to poor pupils	2	time	6000			<input type="checkbox"/>
180105	Kaoh Rung	lk	12	time	2800	Department of Health		<input type="checkbox"/>
180105	Kaoh Rung	Women immunization	4	time	4000	Department of Health		✓
180105	Kaoh Rung	TB/leprosy patients searching	12	time	2400	Department of Health		<input type="checkbox"/>
180105	Kaoh Rung	Antenatal care service accessibility improvement	12	time	3000	Department of Health		✓
180105	Kaoh Rung	Antenatal care service accessibility improvement	12	time	2000	Reproductive Health Association of Cambodia		✓
180105	Kaoh Rung	Ferric tablet and Vitamin A distribution campaign	2	time	2000	Reproductive Health Association of Cambodia		✓
180105	Kaoh Rung	Nutrition support	4	time	2000	Department of Health		✓
180105	Kaoh Rung	Food safety and hygiene education	4	time	1600	Department of Health		✓
180105	Kaoh Rung	Mosquito larvae removal treatment	2	time	1000	Department of Health		✓
180105	Kaoh Rung	Children immunization provision	4	time	2400	Reproductive Health Association of Cambodia		✓
180105	Kaoh Rung	Reproductive health awareness education	6	time	800	Reproductive Health Association of Cambodia		✓
180105	Kaoh Rung		50	person	7500	Reproductive Health Association of Cambodia		<input type="checkbox"/>
180105	Kaoh Rung	HIV/AIDS awareness education	2	time	800	Reproductive Health Association of Cambodia		<input type="checkbox"/>
180105	Kaoh Rung	HIV/AIDS infected person assistance	12	time	2000	Department of Health		<input type="checkbox"/>
180105	Kaoh Rung	Sexual disease treatment needs	12	time	800	Reproductive Health Association of Cambodia		<input type="checkbox"/>

District Data Book 2009: Development Plans and Projects

Commune GIS	Commune	Temporary Agreements				Supporter	Funding Source	Listed in CIP before DIW
		Project Name	Quantity	Unit	Est.Cost (K.Riels)			
180105	Kaoh Rung	Transmitted disease education and prevention	12	time	3200	Department of Health		✓
180105	Kaoh Rung	Family planning	12	time	4000	Department of Health		✓
180105	Kaoh Rung	Family planning	12	time	3000	Reproductive Health Association of Cambodia		✓
180105	Kaoh Rung	Health/hygiene education for local people	12	time	2800	Department of Health		□
180105	Kaoh Rung	Dengue fever education programme	4	time	2000	Department of Health		□
180105	Kaoh Rung	Reproductive health awareness education	2	time	400	Department of Health		✓
<b>NREM</b>								
180105	Kaoh Rung	Strengthening fishery community	1	Fishing Community	1000			✓
180105	Kaoh Rung	Fish raising community support	1	Team	6000			✓
180105	Kaoh Rung		4	place	2000		PIF	✓
<b>Administration and Security</b>								
180105	Kaoh Rung	Drug business/use prevention	12	time	2400	Police Commissioner's Office		□
180105	Kaoh Rung	Identification card issued	2	time	3000	Police Commissioner's Office		✓
180105	Kaoh Rung	Human right and related law education	2	time	1200	Cambodian League for the Promotion and Defense of H.R		✓
180105	Kaoh Rung	Drug business/use prevention	12	time	2400	Police military		□
180105	Kaoh Rung	Gangs gathering educated for local security	12	time	2400	Police Commissioner's Office		□
180105	Kaoh Rung	Anti-theft in local area reinforcement	12	time	2400	Police Commissioner's Office		□
180105	Kaoh	Anti-theft in local area reinforcement	12	time	2400	Police military		□

District Data Book 2009: Development Plans and Projects

Commune GIS	Commune	Temporary Agreements				Supporter	Funding Source	Listed in CIP before DIW
		Project Name	Quantity	Unit	Est.Cost (K.Riels)			
	Rung							
180105	Kaoh Rung	Gambling conquest reinforcement	12	time	2400	Police military		<input type="checkbox"/>
180105	Kaoh Rung	Gambling conquest reinforcement	12	time	2400	Police Commissioner's Office		<input type="checkbox"/>
180105	Kaoh Rung	Drug and related law education	2	time	500			<input type="checkbox"/>
180105	Kaoh Rung	TV/Radio broadcasting of local news	1	time	240	Department of Information	PIF	<input type="checkbox"/>
Gender								
180105	Kaoh Rung	Law against domestic violence dissemination	1	time	240	Department of Women	PIF	✓
180105	Kaoh Rung	Anti-domestic violence law dissemination	2	time	400	Cambodian League for the Promotion and Defense of H.R		✓
180105	Kaoh Rung	Children's labor exploitation elimination	1	time	1000	Department of Labor and Vocational Training		✓
180105	Kaoh Rung	Materials support to create women job	2	time	4000			✓
180105	Kaoh Rung	Woman and children's rights dissemination	1	time	240	Department of Women	PIF	✓
180105	Kaoh Rung	Law against trafficking dissemination	1	time	400	Department of Labor and Vocational Training		<input type="checkbox"/>
180105	Kaoh Rung	Anti-trafficking of women and children law dissemination	1	time	240	Department of Women	PIF	<input type="checkbox"/>
180105	Kaoh Rung	Gender mainstreaming concept training	1	Course/year	240	Department of Women	PIF	<input type="checkbox"/>
180105	Kaoh Rung	Women role in development strengthening/dissemination	1	time	240	Department of Women	PIF	<input type="checkbox"/>
180105	Kaoh Rung	Children's rights dissemination	2	time	1000	BAICE		<input type="checkbox"/>
180105	Kaoh Rung	Gender FP strengthening	1	time	260	Department of Women	PIF	✓

**Source:** CDPD, District Level Detail TA resulting from DIW

**8.3 Outputs, estimated and actual costs of C/S Fund Projects between 2005 and 2008, by Commune**

Commune	Project Type	Budget Year	Output		Quantity	Unit	Unit Cost MR	
			Description	Type			Estimate	Actual
Muoy	Rural Transport	2005	Drain pipe for flood water	New	6	Line	8.77	37.38
Muoy	Rural Transport	2005	Single pipe culvert	New	1	Place	1.69	37.38
Muoy	Rural Transport	2005	Laterite road	Repair	2.175	Km	28.11	37.38
Muoy	Rural Transport	2006	Single pipe culvert	New	4	Place	7.61	46.77
Muoy	Rural Transport	2006	Laterite road	Repair	1.782	Km	32.66	46.77
Muoy	Rural Transport	2006	Double pipe culvert	New	1	Place	5.86	46.77
Muoy	Rural Transport	2006	Drain pipe for flood water	New	1	Line	3.23	46.77
Muoy	Rural Transport	2007	Laterite road	Repair	1.186	Km	34.42	53.09
Muoy	Rural Transport	2007	Double pipe culvert	New	2	Place	10.66	53.09
Muoy	Rural Transport	2007	Single pipe culvert	New	6	Place	8.17	53.09
Muoy	Urban transport	2008	Concrete road	Upgrade	8.80E-02	Km	52.18	51.87
Pir	Rural Transport	2005	Laterite road	Repair	1.679	Km	28.03	26.08
Pir	Rural Transport	2005	Single pipe culvert	New	3	Place	4.78	26.08
Pir	Rural Transport	2006	Single pipe culvert	New	1	Place	3.07	41.60
Pir	Rural Transport	2006	Laterite road	Repair	1.215	Km	22.61	41.60
Pir	Rural Transport	2006	Drain pipe for flood water	New	6	Line	21.48	41.60
Pir	Rural Transport	2007	Drain pipe for flood water	New	1	Line	7.82	47.62
Pir	Rural Transport	2007	Concrete road	New	0.302	Km	39.80	47.62
Pir	Urban Drainage and Flood Protection	2007	Drainage	New	168	Line	20.32	20.32
Pir	Urban Drainage and Flood Protection	2008	Drainage	New	1	Line	16.36	16.44
Pir	Urban transport	2008	Concrete road	Upgrade	7.24E-02	Km	42.27	42.27
Bei	Rural Transport	2005	Single pipe culvert	New	1	Place	3.02	28.14
Bei	Rural Transport	2005	Laterite road	Repair	1.33	Km	31.14	28.14
Bei	Rural Transport	2005	Drain pipe for flood water	New	3	Line	7.23	28.14
Bei	Urban transport	2006	Bitumen road	Repair	0.275	Km	66.52	61.19
Bei	Urban transport	2007	Bitumen road	New	0.298	Km	51.61	51.50
Bei	Urban Drainage and Flood Protection	2007	Drainage	New	167	Line	20.32	20.32
Bei	Urban transport	2008	Concrete road	Upgrade	9.84E-02	Km	57.16	57.16
Bei	Urban Drainage and Flood Protection	2008	Drain pipe for flood water	New	1	Line	1.42	16.46
Bei	Urban Drainage and Flood Protection	2008	Drainage	New	2	Line	14.98	16.46
Buon	Rural Transport	2005	Double pipe culvert	New	1	Place	3.61	33.75
Buon	Rural Transport	2005	Triple pipe culvert	New	1	Place	6.70	33.75
Buon	Rural Transport	2005	Laterite road	Repair	1.67	Km	35.56	33.75

Commune	Project Type	Budget Year	Output		Quantity	Unit	Unit Cost MR	
			Description	Type			Estimate	Actual
Buon	Rural Transport	2005	Single pipe culvert	New	2	Place	3.76	33.75
Buon	Rural Transport	2006	Drain pipe for flood water	New	1	Line	3.95	78.11
Buon	Rural Transport	2006	Single pipe culvert	New	1	Place	1.57	78.11
Buon	Rural Transport	2006	Double cell box culvert	New	1	Place	12.31	78.11
Buon	Rural Transport	2006	Laterite road	Repair	4.05	Km	63.82	78.11
Buon	Urban Drainage and Flood Protection	2007		Repair	0		0	20.572515
Buon	Urban transport	2007	Concrete road	New	0.768	Km	75.18	75.18
Buon	Urban Drainage and Flood Protection	2008	Drainage	New	4	Line	36.71	37.24
Buon	Urban transport	2008	Concrete road	Upgrade	0.1097	Km	86.92	86.92
Kaoh Rung	Rural Transport	2005	Boat landing place	New	1	Place	24.20	24.20
Kaoh Rung	Rural Transport	2006	Boat landing place	New	1	Place	19.59	19.30
Kaoh Rung	Irrigation	2007	Earth dam	New	0.15	Km	0.19	34.50
Kaoh Rung	Irrigation	2007	Double cell box culvert with gate	New	1	Place	1.57	34.50
Kaoh Rung	Rural Transport	2007	Boat landing place	New	0.175	Place	38.64	38.60
Kaoh Rung	Rural Domestic Water Supplies	2008	Rainwater tank filled by other run-off	New	1	Place	7.56	16.89
Kaoh Rung	Rural Domestic Water Supplies	2008	Rainwater tank filled by other run-off	Repair	1	Place	9.33	16.89
Kaoh Rung	Rural Transport	2008	Boat landing place	New	1	Place	30.55	30.50

Source: PID

#### 8.4 Total Expenditure on C/S Fund Projects by sector and commune between 2005 and 2008

Sector	Total Cost in Million Riels				
	Muoy	Pir	Bei	Buon	Kaoh Rung
Irrigation					34.50
Rural Domestic Water Supplies					16.89
Rural Transport	137.23	115.30	28.14	111.86	112.60
Urban Drainage and Flood Protection		36.76	36.78	57.81	
Urban transport	51.87	42.27	169.85	162.11	

Source: PID



**8.5 Actual 2009 C/S Fund projects by Commune**

Commune	Project Type	Project Output		Quantity	Unit	Fund Source (Riels)		
		Description	Type			Total	C/S	Local Contribution
Sangkat Muoy	Rural Transport	Steel-reinforced concrete road	Upgrade	0.12	km	150,872,445	150,000,000	872,445
Sangkat Pir	Rural Transport	Steel-reinforced concrete road	Upgrade	0.04	km	260,500,000	260,000,000	500,000
Sangkat Pir	Rural Transport	Steel-reinforced concrete road	Upgrade	0.07	km	260,500,000	260,000,000	500,000
Sangkat Bei	Rural Transport	Steel-reinforced concrete road	Upgrade	0.145	km	173,900,000	173,100,000	800,000
Sangkat Buon	Rural Transport	Steel-reinforced concrete road	Upgrade	0.13	km	76,500,000	75,000,000	1,500,000
Sangkat Kaoh Rung	Rural Transport	Port	New	1	Place	37,109,596	36,809,596	300,000

**Source:** PID

## 9 District level Projects from 2006 to 2009

District Initiative Projects (DIPs) are funded by Danida, DFID and PSDD (UNDP, DFID and SIDA).

### **Funding for 2006-2008**

Between 2006 and 2008 there were 14 provinces funded by PSDD and 10 by Danida and DFID. The list of provinces and who funded these is below

#### *Danida and DFID funded DIPs:*

Kampong Cham	Kampong Speu	Koh Kong	Kratie	Monduliri
Pursat	Ratanakiri	Siem Reap	Sihanoukville	Kep

#### *PSDD funded DIPs:*

Banteay Meanchey	Battambang	Kampong Chhnang	Kandal	Phnom Penh
Prey Veng	Svay Rieng	Takeo	Kampong Thom	Preah Vihear
Stung Treng	Kampot	Oddar Meanchey	Pailin	

### **Funding for 2009**

In 2009 there was a change to the number of provinces funded by the two streams. Danida and DFID were still funding the same 10 provinces they had been funding the previous three years, but two more provinces were added *Kampong Thom and Kampot*. Now PSDD funds 12 provinces and Danida and DFID fund 12.

## **9.1 District Initiative Infrastructure Projects from 2006 to 2009**

### **9.1.1 District Initiative Infrastructure Projects for 2006 to 2008**

Date	Project Name	Implementing Agencies	Budget (US\$)	Project Output & Capacity	Number of Beneficiaries
2007	Construct concrete road 324 m	Inter-commune	20,606.00		

### **9.1.2 District Initiative Infrastructure Projects in 2009**

*No District Initiative Infrastructure Projects have been implemented in this district for 2009*

## 9.2 District Initiative Service Projects from 2006 to 2009

### 9.2.1 District Initiative Service Projects for 2006 to 2008

Date	Project Names	Implementing agencies	Budget (US\$)	Project Output & Capacity	Number of Beneficiaries
2008	Animal raising training	AGR office	511.56	3 courses	4 Sangkats
2008	Support farmer groups activity	AGR office	1,635.36	10 months	4 Sangkats
2008	Provide cows and support	AGR office	12,000.00	40 cows	4 Sangkats
2008	Small scale integrated farming and mushroom growing training	AGR office	652.56	2 courses	3 Sangkats
2008	Form farmer groups and support mushroom growing activity	AGR office	5,032.56	5 groups	3 Sangkats
2008	Form and upport community fishery and Fish habitat box	Fishery	6,853.50	2 committee	4 Sangkats
2008	Fishery Law dissemination	Fishery	647.73	2 times	3 Sangkats
2007	Pig raising awareness and provide piglets	District Agri	6,445.00		
2007	Dissemination on Sanitation and Environment	District Environment	748.00		

### 9.2.2 District Initiative Service Projects in 2009

Project Name	Sector	Implementing Agency	Budget	Project outputs/ capacities	No. of Beneficiaries		Progress	Remarks on Issues of Progress
					Total	Female		
Vegetable growing training and provide vegetable seeds	AGR	AGR Office	\$900.00	1 course	60	40	0%	
Fish habitat box	AGR	Fisheries Admin	\$6,000.00	30 boxes	1,700	850	0%	
Fish raising training and support	AGR	Fisheries Admin	\$12,100.00	1 course, 3 pen, 20,000 baxic fish	90	45	0%	
Training and establish crab bank	AGR	Fisheries Admin	\$8,020.00	40 cows	120	60	0%	

### 9.3 Inter Commune Council Projects in 2008 and 2009

#### 9.3.1 ICC Projects in 2008

Districts	Project Location	Beneficiary Commune/ Sangkat	Outputs	Project Size	Unit	Contract Cost	Fund Sources	
							ICC Fund	Community
Mitapheap	1 & 3	1 & 3	Concrete road	161	meter	\$21,500.00	\$20,500.00	\$1,000.00
	3&4	3&4	Concrete Culvert	1	place	\$12,500.00	\$11,780.77	\$719.00
Total for Mitapheap						<b>\$34,000.00</b>	<b>\$32,280.77</b>	<b>\$1,719.00</b>
Prey Nup	Sam Rong	SamRong & AndoungThma	Laterite road upgrade	700	meter	\$10,037.00	\$10,037.00	\$0.00
			Single pipe	2	place			
	SamRong & AndoungThma	SamRong & AndoungThma	Triple Culvert with gate	1	place	\$19,500.00	\$18,550.00	\$950.00
	Andong Thma, O' Oknha Heng	Andong Thma, O' Oknha Heng, Boeng Taprom, Bit trang, Cheong Ko, O' Chriv	Environment and sanitation education	2	Session	\$1,400.00	\$1,400.00	\$0.00
	Choeng Ko, Samaki, Tuk La Ak	Choeng Ko, Samaki, Tuk La Ak	Bill-board on wildlife preservation	2	Unit	\$600.00	\$600.00	\$0.00
			Anti-wildlife hunting campaign	1	Session			
Total for Prey Nup						<b>\$31,537.00</b>	<b>\$30,587.00</b>	<b>\$950.00</b>
Stueng Hav	Kampenh & Otres	Kampenh , Otres ,Tomnoporlorc	Gravel road	278	meter	\$30,000.00	\$30,000.00	\$0.00
Total for Stoeng Hav						<b>\$30,000.00</b>	<b>\$30,000.00</b>	<b>\$0.00</b>
Kampong Seila	O' Baroteh	Kampong Sela, O' Bakroteh	Laterite road and culvert construction	400	Metre	\$11,700.00	\$11,640.00	\$60.00
	O' Baroteh	Kampong Sela, O' Bakroteh	Office construction for tourism community	1	Unit	\$10,780.00	\$10,740.00	\$40.00
Total for Kampong Seila						<b>\$22,480.00</b>	<b>\$22,380.00</b>	<b>\$100.00</b>
Total for Prah Sihanouk						<b>\$118,017.00</b>	<b>\$115,247.77</b>	<b>\$2,769.00</b>

### 9.3.2 ICC Projects in 2009

Districts	Project Location	Beneficiary Commune/ Sangkat	Outputs	Project Size	Unit	Contract Cost	Fund Sources	
							ICC Fund	Community
Krong Phreah Sihanouk	Sangkat 3	Sangkat 1 and Sangkat 3	Concrete Road Construction	180	Meter		\$20,000.00	\$251.00
	Sangkat 1, 2, 3 & Koh Rong	Sangkat 1, 2, 3 & Koh Rong	Training on Animal Raising	1	Course		\$2,228.44	
			Female Cow	5	Cow			
Total for Mitapheap						\$0.00	\$22,228.44	\$251.00
Prey Nup	Andoung Thmar	Angdoung Thmar, Samrong, Tual Tortueng	Laterite Road Construction	950	Meter		\$20,000.00	
			Culvert	3	Places			
	Chueng Kor	Chueng Kor, Sammaki, Veal Rinh	Laterite Road Construction	1,050	Meter		\$15,000.00	
Total for Prey Nup						\$0.00	\$35,000.00	\$0.00
Stoeng Hav	Tumnub Rolork	Kam Penh, Ou Thres, Tumnub Rolork	Gravel Road Construction	385	Meter		\$33,600.00	\$125.00
Total for Stoeng Hav						\$0.00	\$33,600.00	\$125.00
Total for Sihanoukville						\$0.00	\$90,828.44	\$376.00

*Source: ICC project, Ministry of Interior (DoLA), -UNDP project for Local Governance – DDLG*

## 9.4 Other Projects in 2008 and 2009

### 9.4.1 RPRP

*There are no RPRP projects being implemented in this district or province at this time. The RPRP is only being implemented in Svay Rieng and Prey Veng*

#### 9.4.1.1 RPRP Projects from 2006 to 2008

*No RPRP projects in this district at this time*

#### 9.4.1.2 RPRP Projects in 2009

*No RPRP projects in this district at this time*

## **9.4.2 Seth Korma**

### **9.4.2.1 Seth Korma 2007**

*There are no Seth Korma projects being implemented in this district or province at this time.*

**Source:** UNICEF

### **9.4.2.2 Seth Korma 2008**

*There are no Seth Korma projects being implemented in this district or province at this time.*

**Source:** UNICEF

### **9.4.2.3 Seth Korma 2009**

*There are no Seth Korma projects being implemented in this district or province at this time.*

**Source:** UNICEF

## **SECTION D: SERVICES AND ORGANIZATIONS**





## 10 Infrastructure

### 10.1 Length of and Expenditure on Roads in 2008, by District

Roads	SHV	Preah Sihanouk	Prey Nub	Stoeung Hao	Kampong Seila
Length of paved road in the district in Km	30	28	0	2	0
Length of unpaved roads in the district in Km	28	9	17	2	0
Amount spent on construction of roads in 2008 (\$)	203,308	37,245	141,241	24,822	0
Amount spent on repair and rehabilitation of roads in 2008 (\$)	5,000	5,000	0	0	0

**Note 1:** Please note that these data are not necessarily complete or correct. The data are derived from government agencies at provincial and district level which used different recording systems, did not always have complete data or were, sometimes, less than willing to share their data.

**Note 2:** Please be aware that these data are incomplete due to the fact that the amounts for the construction, repair and rehabilitation recorded reflect only funds provided by the government, not the contributions by any other parties.

### 10.2 Scale of and Expenditure on Irrigation in 2008, by District

Irrigation	SHV	Preah Sihanouk	Prey Nub	Stoeung Hao	Kampong Seila
Number of irrigation schemes operating in 2008	50	3	47	n/a	n/a
Total nr of hectares under irrigation in dry season 2008	-	n/a	n/a	n/a	n/a
Total funds spent in 2008 on construction of irrigation systems (\$)	-	n/a	n/a	n/a	n/a
Total funds spent in 2008 on rehabilitation/repair of irrigation systems (\$)	19,867	n/a	19,867	n/a	n/a
Total funds spent in 2008 on operation and maintenance (\$)	33,261	n/a	33,261	n/a	n/a

**Note 1:** Please note that these data are not necessarily complete or correct. The data are derived from government agencies at provincial and district level which used different recording systems, did not always have complete data or were, sometimes, less than willing to share their data.

**Note 2:** Please be aware that the data above are incomplete as these only reflect funds provided by the government, not the contributions by farmers or other parties.

### 10.3 Power Supply in 2008, by District

Electricity	SHV	Preah Sihanouk	Prey Nub	Stoeung Hao	Kampong Seila
Total number of electricity connections to households	13,345	7,598	3,500	2,247	n/a
Total number of electricity connections to agencies, companies, organizations	1,022	1,014	7	1	n/a
Total volume in KWh of electricity consumed last in 2008	1,950,216	n/a	87,500	75,018	n/a
Total amount collected from users for consumed electricity (\$)	1,655,170	1,537,920	43,750	73,500	n/a
Per capita electricity consumption in 2008 in Kwh	221	178	25	18	n/a

**Note 1:** Please note that these data are not necessarily complete or correct. The data are derived from government agencies at provincial and district level which used different recording systems, did not always have complete data or were, sometimes, less than willing to share their data.

**Note 2:** These data only record electricity provided by electricity companies and does not include homes powered by generators or batteries (for this information see Section B: General Profile, Part 1: General Information; table 1.3.1 and chart 1.3.4).

**Note 3:** In most provinces electricity is only provided through town-based networks

**Note 4:** Per capita consumption is calculated by dividing the total volume of electricity produced in 2008 by the number of people living in each district as per the 2008 census (for the provincial data it is calculated against the number of people living in the province)

## 11 Health Facilities

Please note that the Operational District (health) boundaries are different to the administrative district boundaries. Therefore the data provided here shows the facilities, staff, NGOs etc in each Operational District within the province NOT the administrative district.

### Acronyms

<b>Com Cov</b>	Commune Covered	<b>MW2</b>	Secondary Midwives
<b>CPA</b>	Complementary Package of Activities	<b>NU1</b>	Primary Nurse
<b>Dr</b>	Doctor	<b>NU2</b>	Secondary Nurse
<b>FDH</b>	Former District Hospital	<b>OD</b>	Operational District
<b>HC</b>	Health Center	<b>Others</b>	Other Staff
<b>HC (NB)</b>	Health Center no building	<b>PHD</b>	Provincial Health Department
<b>HP</b>	Health Post	<b>Pop 04-05</b>	Population Covered 2004 or 2005
<b>MA</b>	Medical Assistant	<b>RH</b>	Referral Hospital
<b>MPA</b>	Minimum Package of Activities	<b>Vil Cov</b>	Village Covered
<b>MW1</b>	Primary Midwives	<b>VIL-HC</b>	Distance from Village to Health Center

### 11.1 Health Facilities in the Province, by Operational District

Sihanouk Ville	OD	RH	HC	HP
Sihanouk Ville	1		10	2
<b>Total</b>	<b>1</b>	<b>0</b>	<b>10</b>	<b>2</b>

### 11.2 Health Facilities and Staff in the province, by Operational District

This table shows health facilities, staff and coverage of health facilities in each operational district.

No	Facility Name	Type	Class	Dr	Ma	Nu2	Nu1	Mw2	Mw1	Others	Com Cov	Vil Cov	Pop. 04-05
<b>Sihanouk Ville</b>													
1	Andaung Thma	HC	MPA	1	0	1	3	0	2	1	3	14	14,441
2	Cheung Kou	HC	None MPA	0	0	0	0	0	0	0	1	9	9,828
3	Kaoh Rung	HP	Nil	0	0	0	0	0	0	0	1	4	2,178
4	O Chrov	HC	MPA	0	0	3	2	2	0	0	2	11	16,251
5	O Oknha Heng	HC	MPA	0	1	2	5	0	1	1	2	10	13,078
6	Preak Kranh	HP	Nil	0	0	0	2	0	0	0	1	1	1,047
7	Ream	HC	MPA	0	0	7	2	0	1	0	2	7	12,022
8	Sangkat Muoy	HC	MPA	0	2	2	2	4	0	0	2	6	32,439
9	Sihanoukville	HC	MPA	2	1	4	3	3	2	1	2	9	35,336
10	Steung Hav	HC	MPA	1	2	8	1	1	1	0	3	10	12,861
11	Tuek L'ak	HC	MPA	0	0	2	3	1	1	0	3	10	10,252
<b>Total:</b>				<b>4</b>	<b>6</b>	<b>29</b>	<b>23</b>	<b>11</b>	<b>8</b>	<b>3</b>	<b>22</b>	<b>91</b>	<b>159,733</b>

Source: MEDiCAM – Infrastructure - ([http://www.medicam-cambodia.org/hsi/health\\_system/srch/index.asp?cboLn=6&cmdSearch=Search&cboCHName=&cboType=](http://www.medicam-cambodia.org/hsi/health_system/srch/index.asp?cboLn=6&cmdSearch=Search&cboCHName=&cboType=))

### 11.3 Deliveries in 2007 in the Province, by Operational District

OD	Deliveries	Deliveries at home		Deliveries	Total deliveries	Total deliveries
	at HC	By Health Staff	ByTBAs	at RH	by Health Staff	by health staff and TBAs
Sihanouk	578	619	453	600	1797	2250
<i>Sub-total</i>	<i>578</i>	<i>619</i>	<i>453</i>	<i>600</i>	<i>1797</i>	<i>2250</i>

Source: MoH, Annual Statistics 2007

## 12 Education<sup>3</sup>

### 12.1 Schools, Classes, Students, Staff, for all levels, for 2007/2008 by District

District	Number of Schools	Disadv. Schools	Number of Classes	Classes in Pagoda	Enrollment		Repeaters		Teaching Staff		Non-Teaching Staff		Total Staff	
					Total	Girl	Total	Girl	Total	Female	Total	Female	Total	Female
Mittapheap	28	1	491	4	18,060	8,481	949	359	665	294	93	42	758	336
Prey Nup	59	0	506	0	22,133	10,224	2,096	855	505	164	106	15	611	179
Stung Hav	9	0	69	2	2,844	1,346	112	36	92	29	11	2	103	31
<b>Whole Province</b>	96	1	1,066	6	43,037	20,051	3,157	1,250	1,262	487	210	59	1,472	546
- Urban Area	96	1	1,066	6	43,037	20,051	3,157	1,250	1,262	487	210	59	1,472	546

### 12.2 Characteristics of Schools and School Principals for 2007/2008 by Commune

Commune	Number of Schools				2 - Shift	Floating	Schools	Attached	Schools Without		Characteristics of School Principals (Incharge)			
	Pre-Sch	Primary	College	Lycee	Schools	Schools	in Pagoda	Pre-Sch	Water Sup.	Latrine	Avg. Age	Avg. Service	U.Sec+ Ed.	Female
Muoy	1	3	2	0	4	0	0	1	3	2	44.5	22.2	2	3
Pir	3	2	0	0	2	0	0	2	2	0	44.6	21.4	3	2
Bei	1	4	1	1	6	0	0	1	4	1	48.7	24.3	3	4
Buon	2	3	1	1	5	0	1	2	3	1	44.0	20.6	2	2
Kaoh Rung	0	3	0	0	3	0	0	0	2	2	30.4	8.0	2	0

### 12.3 Enrolment by Level of Education, 2006/2007 by Commune

Commune	School	Pre school		Primary School		Lower Secondary School		Upper Secondary School		Enrolment	
		Total	Female	Total	Female	Total	Female	Total	Female	Total	Female
Muoy	6	68	29	2920	1396	777	340	0	0	3765	1765
Pir	5	315	156	3333	1613	0	0	0	0	3648	1769
Bei	7	50	28	2313	1090	2021	956	2221	899	6605	2973
Buon	7	141	67	2668	1238	1486	670	658	278	4953	2253
Kaoh Rung	3	0	0	288	154	0	0	0	0	288	154

<sup>3</sup> All the data for section 12 comes from the Ministry of Education, Youth and Sport (MoEYS)

**12.4 Enrolment by Level of Education, 2007/2008 by Commune**

Commune	School	Pre school		Primary School		Lower Secondary School		Upper Secondary School		Enrolment	
		Total	Female	Total	Female	Total	Female	Total	Female	Total	Female
Muoy	6	73	35	2684	1258	842	374	0	0	3599	1667
Pir	5	280	167	3237	1562	0	0	0	0	3517	1729
Bei	7	45	24	1815	880	1733	803	2195	961	5788	2668
Buon	7	136	85	2424	1167	1548	675	697	306	4805	2233
Kaoh Rung	3	0	0	351	184	0	0	0	0	351	184

**12.5 Aspects of Enrolment for 2007/2008 by Commune**

Commune	% Repeaters (Total)			% Over-age Enrollment (Total)			% Repeaters (Girl)			% Over-age Enrollment (Girl)		
	Primary	L.Sec.	U.Sec.	Primary	L.Sec.	U.Sec.	Primary	L.Sec.	U.Sec.	Primary	L.Sec.	U.Sec.
Muoy	8.8	0.7	0.0	25.5	34.1	0.0	7.7	0.5	0.0	23.1	30.7	0.0
Pir	7.2	0.0	0.0	19.6	0.0	0.0	5.5	0.0	0.0	16.8	0.0	0.0
Bei	5.0	1.3	3.1	22.0	27.4	58.1	3.6	0.2	1.1	19.1	22.5	50.3
Buon	10.6	0.5	0.4	29.1	36.6	37.4	9.3	0.1	0.0	26.3	28.6	32.4
Kaoh Rung	7.7	0.0	0.0	29.9	0.0	0.0	10.3	0.0	0.0	30.4	0.0	0.0

**12.6 School Buildings for all schools in the District for 2007/2008, by Commune**

Commune	Total Number of		Concrete/Brick Structure		Wooden Structure		Bamboo Structure		New Buildings		Buildings Without Good		
	Buildings	Rooms	Buildings	Rooms	Buildings	Rooms	Buildings	Rooms	Repaired	Constructed	Floor	Roof	Wall
Muoy	13	64	13	64	0	0	0	0	0	0	1	0	1
Pir	13	67	11	60	2	7	0	0	0	1	8	4	5
Bei	23	121	20	110	3	11	0	0	0	2	2	2	5
Buon	19	102	19	102	0	0	0	0	0	0	0	2	2
Kaoh Rung	4	13	1	6	3	7	0	0	1	1	2	2	2

**12.7 Conditions of Classrooms and Existence of Separate School Office and Library, by Commune**

Commune	Number of Class rooms	Number of Classrooms			Classrooms Without Good			Number of Furniture needed				Schools with Separate	
		in Pagoda	New Repaired	New Constr.	Floor	Roof	Wall	Desks	Chairs	Black-board	Teacher Table	Office	Library
Muoy	56	4	0	0	5	0	4	30	30	10	10	4	3
Pir	61	0	1	3	28	17	21	20	20	0	4	4	3
Bei	97	0	0	10	8	8	25	0	0	0	6	7	6
Buon	91	0	0	0	0	10	10	160	0	0	10	5	5
Kaoh Rung	11	0	3	6	5	5	5	0	1	0	5	1	0

**12.8 Community Participation and Financing across all schools in the District for 2007/2008 by Commune**

Commune	Parent Association				Comm. Teachers	Teaching Monks	PAP Fund (Riel)		Number of Schools Obtaining Funds from				
	Exists	Held Meet	Total	Female			per Student	per School	Sch. Income	Community	Gvt. For building	Abroad	IOs/NGOs
Muoy	5	5	6	0	0	0	7,973	4,555,940	0	0	0	0	0
Pir	4	4	5	1	0	0	9,442	15,735,800	0	1	0	1	0
Bei	6	6	6	1	0	0	14,003	14,610,280	0	0	0	0	0
Buon	6	6	7	1	0	0	13,049	11,727,350	0	0	0	0	0
Kaoh Rung	3	3	5	0	0	0	10,139	1,439,800	0	0	0	0	0

**12.9 Percentage Student Flow Rates and Graduation by level 2006/2007, by Commune**

Commune	Primary Level (Grades 1-6)			Lower Secondary Level (Grades 7-9)			Upper Secondary Level (Grades 10-12)			Successful Candidates		
	Promotion	Repetition	Dropout	Promotion	Repetition	Dropout	Promotion	Repetition	Dropout	Grade 6	Grade 9	Grade 12
Muoy	77.9	8.0	14.0	79.7	0.8	19.6	0.0	0.0	0.0	321	125	0
Pir	87.5	7.0	5.6	0.0	0.0	0.0	0.0	0.0	0.0	477	0	0
Bei	76.7	3.9	19.3	85.9	1.1	13.0	84.0	3.0	13.0	358	585	519
Buon	79.9	9.7	10.4	81.4	0.5	18.1	86.0	0.5	13.5	353	299	132
Kaoh Rung	92.4	9.4	-1.7	0.0	0.0	0.0	0.0	0.0	0.0	21	0	0

## 13 Staff and Resources at the District

*This chapter presents data from the District Information System, collected around the middle of 2009 unless otherwise specified.*

### 13.1 District Councilors elected in 2009

Name	Sex	Year of Birth	Function	Phone
គង់ សាម៉ឺន	M	1950	Chairperson of The Council	016-340 456
ហួន សំផុន	M	1941	Councillor	012-758 838
ជុន ហាន	M	1955	Councillor	016-840 171
ហេ ហ៊ុយន	M	1948	Councillor	016-409 266
ផុន ភក្ត្រ	M	1952	Councillor	016-770 797
សិរីត សុផាត	M	1974	Councillor	016-341 212
ណាំ សូផុន	M	1950	Councillor	016-623 333
យ៉ក់ គីហ៊ុន	F	1950	Councillor	016-702 773
សំ ស្រែង	M	1945	Councillor	016-765 799
នូវ ឡឿន	M	1955	Councillor	016-909 694
អ៊ុង ហឿន	M	1976	Councillor	015-525 346
ប៊ុត ប៊ុនណារិទ្ធ	M	1964	Councillor	012-538 168
សិរីត ប៊ុនថុល	M	1970	Councillor	016-527 383
វង់ រុន្ទី	F	1975	Councillor	012-295 432
ជុំ សុផាតិ	M	1951	Councillor	016-477 239

### 13.2 Committees of the Council

*Please note at the time of producing the district data books the composition of the committees was not known for all district councils and therefore data were not available for 13.2.1, 13.2.2, 13.2.3.*

#### 13.2.1 Technical Facilitation Committee

#### 13.2.2 Women's and Children's Affairs Committee

#### 13.2.3 Procurement Committee



### 13.3 Board of Governors

Name	Sex	DoB	Function	Salary Level	Body	Phone
ជិន សារិន	M	1960	Municipality governor	ក.១.២	High Ranking Civil Servant	012-890 222
ឆេង លៀង	M	1952	Municipality deputy governor	ខ.១.៤	Medium Civil Servant	016-340 286
រាជ សុវណ្ណ	M	1974	Municipality deputy governor	ខ.២.៩	Medium Civil Servant	016-308 241
លី វ៉ាន់ដា	M	1969	Municipality deputy governor	ខ.៣.១១	Medium Civil Servant	016-931 943

### 13.4 Offices under Sala Krong, Sala Srok and Sala Khan

Office Name	Chief		Deputy Chief		No. of Staff				Office Area (m2)	No of vehicle (public or program)	
					State		Contract			vehicle	moto
	M	F	M	F	M	F	M	F			
District/ Khan Cabinet	1	0	1	0	0	0	0	0	16	0	0
Adminnistration Office	1	0	1	0	11	3	0	1	37	0	0
Economy Office	1	0	0	0	0	0	0	0	Borrow	0	0
Social Affair Office	1	0	1	0	0	0	0	1	16	0	0

### 13.5 Municipality/District/Khan line offices

Office Name	Chief		Deputy Chief		No. of Staff				Office Area (m2)	No of vehicle (public or program)	
					State		Contract			vehicle	moto
	M	F	M	F	M	F	M	F			
Planning Office	1	0	1	0	1	0	0	0	Borrow	0	0
Women Affairs Office	0	1	0	0	0	0	0	0	Borrow	0	0
Education Office	1	0	2	0	8	3	0	0	56	0	0
Agriculture Office	1	0	1	0	3	0	0	0	16	0	0
Cult and Religion Office	1	0	0	0	0	0	0	0	Borrow	0	0
Lan Management Office	1	0	4	0	7	1	0	0	125	0	0

### 13.6 Properties and Equipment of District Administration

#### 13.6.1 Buildings

Description	Unit	Number	Remark
Office building type			
- Concrete	building	1	
- Wood	building	0	
- Mixed	building	0	
Total floor space	m2		
- Concrete	m2	422	
- Wood	m2	0	
- Mixed	m2	0	
Building condition			
- Concrete	%	100	
- Wood	%	0	
- Mixed	%	0	
Office reserved land area	m2	4,687	
Total office land area	m2	11,136	

**13.6.2 Means of Transport available at the District Administration**

Description	Unit	Number	Remark
Vehicle (type, size and condition)	Vehicle	0	
Motorcycle (type, size and condition)	Motor	0	

**13.6.3 Equipment in District Offices**

Description	Unit	Number	Remark
Generator	per set	0	
Photocopy machine at the office	per set	1	
Private photocopy machine at the district town	place	14	
Telephone network (mobile line service)	network	3	012,016,015
Telephone network (land line service)	network	0	
Fax (include Fax number)	per set	0	
Computer	per set	4	
Printer	per set	3	
Scanner	Per set	1	
Number of computers those can access Internet and email services in the municipality/ district/khan office (including the technical line offices (please provide the email address)	set	0	
Typewriters (including the technical line offices)	per set	1	
Staff of Municipality/district/khan office can use computer	person	9	

**13.6.4 Equipment and facilities at the District Town**

Description	Unit	Number	Remark
Availability of electricity at noon	Nr Hours	12	
Private internet and email services in the municipality/ district/khan town.	place	31	

**13.7 Registered Revenue of the District Administration in 2008<sup>4</sup>****13.8 Services in the District****13.8.1 Public Sector Services**

Type of Infrastructure/services	Unit	Number	
		Public	Private
Schools			
Pre-school	room	15	0
Primary School	room	168	0
Secondary school	room	68	0
High School	room	66	0
University	room	0	6
Health			
Health post	place	1	0
Health center	place	2	0
Referral Hospital	bed	100	0

<sup>4</sup> Please note that the data in this table are at best estimates. If the table appears blank it does not mean there is no revenue, just that the data have not been recorded/entered.

### 13.9 Civil Society Organizations active in the District

#### 13.9.1 NGOs, Associations, Programs and Projects

Name	Abbr.	Sector Activities	No. of Target Communes	No. of Target Villages	Office in District
NA	NA	បណ្តុះបណ្តាលវិជ្ជាជីវៈជីវភាពរស់នៅ	4	13	Yes
ICCBO	NA	អប់រំផ្សព្វផ្សាយសិទ្ធិមនុស្ស	4	13	Yes
NA	NA	ទប់ស្កាត់អំពើហិង្សាក្នុងគ្រួសារ	4	13	Yes
NA	NA	បណ្តុះបណ្តាលវិជ្ជាជីវៈ	4	13	Yes
NA	NA	ព្យាបាលជំងឺឥតគិតថ្លៃ	4	13	Yes
NA	RHAC	អប់រំសុខភាព	413	0	Yes
NA	KKKHRA	ច្បាប់ ការពារសិទ្ធិមនុស្ស	4	13	Yes

#### 13.9.2 Political Parties active in the Municipality, District and Khan

Name	Abbr.	Office in District
Cambodian People Party	CPP	Yes
FUNCINPEC Party	FUNCINPEC	Yes
SAM RAINSY Party	Sam Rainsy Party	Yes

### 13.10 Private Sector Organizations

#### 13.10.1 Registered Companies in 2008, by District

On private sector at commune and/or district level	SHV	Preah Sihanouk	Prey Nub	Stoeung Hao	Kampong Seila
<b>Businesses and Companies</b>					
Number of registered agricultural enterprises (except family farms)					
Number of registered shops, restaurants, transporters and other services	324	321	0	2	1
Number of manufacturing companies	15	15	0	n/a	0
Number of registered forestry enterprises	-	0	0	0	0
Number of registered mining companies	-	0	0	0	1
Number of fin/ancial institutions	8	8	n/a	n/a	0
Number of other commercial institutions	3	3	n/a	n/a	0
Estimated number of informal enterprises (not registered)	n/a	n/a	n/a	n/a	n/a
<b>Employment</b>					
Number of people employed in 2008 by companies or any other enterprises	12,913	9,959	2,006	948	n/a
<b>Investment</b>					
Amount invested in 2008 by private sector (\$)	45,970	45,970	n/a	n/a	n/a
<b>Markets</b>					
Number of markets, operating at least weekly	19	8	9	n/a	n/a

**Note:** These data are not comprehensive as different companies and business are registered with different departments and not all departments were able or willing to provide detailed information. The number of informal enterprises reflects a rough estimate, made at provincial level and could not be verified.

**Source:** Unofficially collected at Provincial Level

#### 13.10.2 Farmers in 2008, by District

Credit	SHV	Preah Sihanouk	Prey Nub	Stoeung Hao	Kampong Seila
Volume of credit provided to farmers in 2008 (\$)	84,375	84,375	n/a	n/a	n/a
Number of farmers receiving credit in 2008	45	45	n/a	n/a	n/a
Volume of credit provided to companies in 2008 (\$)	N/A	N/A	n/a	n/a	n/a

**Note:** Please note that these data are not necessarily complete or correct. The data are derived from government agencies at provincial and district level which used different recording systems, did not always have complete data or were, sometimes, less than willing to share their data.

**Source:** Unofficially collected at Provincial Level

## **SECTION E: POVERTY DATA**



## 14 Data on Poverty

### 14.1 Predicted Poverty Rates for 2009, by commune

The **Predicted Family Poverty Rate** is based on a statistical model (robust multilevel mixed effect regression) at village level developed by the NCDD M&E Unit and uses CDB data for making an estimate of the predicted poverty rate (this is: *the portion of total families in the district or commune who are expected to be poor*) for the following year using current year data.

The basis for this predicted poverty rate also uses IDPoor (a project of the Ministry of Planning with technical assistance provided by GTZ) data

Commune	2004	2009
Muoy	24.80%	5.80%
Pir	20.60%	0%
Bei	23.40%	2.80%
Buon	27.10%	5%
Kaoh Rung	38%	30.20%

### 14.2 Poverty data from survey

#### 14.2.1 Identification of Poor Households Program (IDPoor)

The Ministry of Planning IDPoor Program has developed standardized Procedures for Identification of Poor Households in rural areas. These Procedures are implemented using a participatory and consultative process by sub-national government structures and community representatives.

The IDPoor Program is managed by the Ministry of Planning (MOP), in cooperation with the Ministry of Interior's Department of Local Administration (DOLA). The program is supported by the Federal Republic of Germany, with technical assistance provided by German Technical Cooperation (GTZ). In 2009, AusAID also provided funding support to the Program.

#### Objective

The IDPoor Program aims to implement the Procedures for Identification of Poor Households in rural areas as widely as possible, in order to provide data on the level of poverty of areas and households that can be used by a large range of institutions and organizations for targeting services and development assistance to poor areas and poor households.

**Coverage:** During 2007, 2008 and 2009 the IDPoor Procedures have been implemented in 18 provinces (with partial or complete coverage), covering a total of around 7000 rural villages. The MOP and a number of NGO partners who are Health Equity Fund Operators have collaborated in collecting this data from different areas.

**Categorization:** Identified poor households are classified under two poverty categories: Poor Level 1 (very poor), and Poor Level 2 (poor). Households are classified based on data collected using a standard questionnaire, together with consideration by villagers of these households' special circumstances.

**Further information:** Please go to the IDPoor Program webpage at [www.mop.gov.kh/Projects/IDPoor/tabid/154/Default.aspx](http://www.mop.gov.kh/Projects/IDPoor/tabid/154/Default.aspx)

*This District has not yet been covered by IDPoor*

